



World-class
RESEARCH
within REACH





The University of Alabama at Birmingham:

World-class
RESEARCH
within **REACH**

TOP 10%

Best Global University
U.S. News & World Report 2022

#1

Emerging
Entrepreneurship
Program in the US

*Excellence in Entrepreneurship
Education Awards 2022*

#2

Among Public Schools of
Nursing in NIH Funding

*Blue Ridge Institute for Medical
Research 2021*

#19

Master's in Public Health

U.S. News & World Report 2022

Health sciences programs:

TOP 25

programs from a
top 10% global
university

#1

Master's in Health
Care Management

U.S. News & World Report since 2019

#9

Best Bachelor of
Science in Nursing
in the US

U.S. News & World Report 2023



#32

Best Medical Schools:
Research

U.S. News & World Report 2023

#61

Master's in Biomedical
Engineering

U.S. News & World Report 2022

8 UAB

medicine specialties
ranked in the nation's top
50 by *U.S. News & World
Report 2022-2023 Best
Hospitals Rankings*

World-class research within reach. Your career within reach.

Research with global impact

At the University of Alabama at Birmingham, you will take part in world-class research and serve your global and local community while receiving an education that will prepare you for a bright future.



Our research faculty are among the nation's best-funded and provide exceptional mentoring and training. For instance, you could work with Jianyi "Jay" Zhang, MD, PhD, FAHA, an international leader in myocardial biomaterials and stem cells for cardiac repair. You can also check out our research legacy from figures like the late astrophysicist and professor emeritus, Thomas Wdowiak, PhD. His work helped get a rover to Mars, and he has an area of the planet named after him called "Wdowiak Ridge."

Faculty spotlight: Dr. Shadi S. Martin

UAB's Vice Provost of International Education, Dean of Graduate School and Chief International Officer, Shadi S. Martin, is leading the initiative to further expand global diversity at UAB. Dr. Martin was a Fulbright Scholar in Damascus, Syria and has worked with the World Health Organization in Europe and the United Nations High Commissioner for Refugees in the Middle East. With her husband from Alabama, she is delighted to be back to the state and is dedicated to connecting UAB and the rest of the world through international exchange.

"I believe an international exchange of students and scholars is critical to creating a richer, kinder and more accepting world. Having international students and scholars at UAB is just as important as having our students and scholars travel abroad. We are far more likely to solve complex world problems if we can bring these great minds together."

Shadi S. Martin, PhD, Vice Provost



Student spotlight: Nabaa

A biology undergraduate originally from Pakistan, Nabaa quickly immersed herself in UAB's community and has already taken part in student leadership and groundbreaking research as a:

- Orientation leader and international mentor.
- COVID-19 screener at Children's of Alabama Hospital.
- Researcher with the Cancer Research Immersion Program.
- Student assistant for Dr. Patrick Murphy.

"I had the opportunity to work in the Alexander lab, which focuses on neuromuscular disorders. This research experience has not only fascinated me, but has also motivated me to continue my research and work on these disorders."

Nabaa, Pakistan



Student spotlight: Jaival

The first international undergraduate in UAB's entrepreneurship program, Jaival is closely involved with Birmingham's spirit of innovation. In his time at UAB, Jaival has:

- Interned at UAB's Innovation Depot.
- Worked with Birmingham non-profit to increase community engagement.
- Started the highly successful UAB International Bike Ride initiative.
- Founded two sportswear retailers in India.
- Been selected as one of five winners of 2022 Alabama Inno Under 25.

"I got to be the youngest international student to be on the advisory board of the Collat School of Business' student panel! I haven't even finished a year on US soil, but through Dr. Patrick Murphy's guidance and my family's support, we made this happen."

Jaival, India

Research fast facts

7,000+

undergraduate students and 7,600+ graduate students involved in research

100% research placement for undergraduates

FAST FACTS

Founded: **1969**
Campus: **Birmingham, Alabama**
Metro Population: **1.2 million**
Campus Size: **275 acres**
Enrollment: **22,289**
International Students: **1,000+**
Countries Represented: **100+**
Bachelor's: **57**
Master's and PhD: **100+**
Research: **\$849M**

\$7.15 BILLION

ECONOMIC IMPACT in the state of Alabama

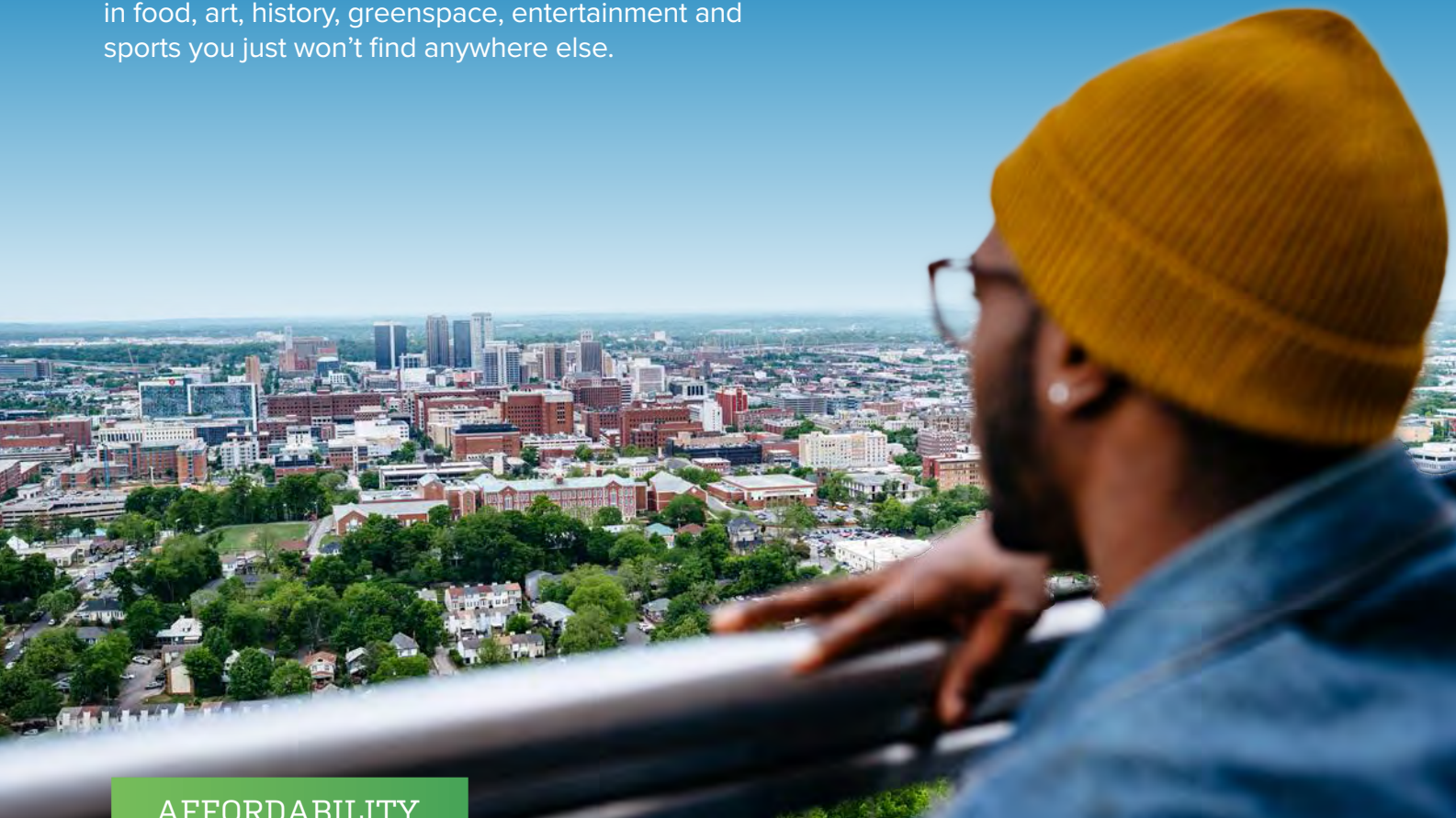


Birmingham, Alabama: the next big city

Every year, Birmingham becomes a spot on more and more people’s maps. And it makes sense, with offerings in food, art, history, greenspace, entertainment and sports you just won’t find anywhere else.

#2

City Where Your
Dollar Goes the Furthest
Porch 2022



What to do in Birmingham

Arts

Birmingham has a thriving arts scene. Whether you’re looking for an on-stage performance, a swanky gallery, a film festival or even a vibrant mural and other street art, it’s hard to beat the creativity in the Magic City.

Dining

Our food is renowned for good reason. It doesn’t matter if you have five-star tastes and a one-star budget – from barbecue and soul food to food trucks and the Pizitz Food Hall, you’re sure to find the perfect eatery for you.

Music

Some of history’s most famous musicians have started out at some of our favorite venues across the city. Whether you want to see someone before they hit it big or catch one of today’s headliners, we have plenty to offer in Birmingham.

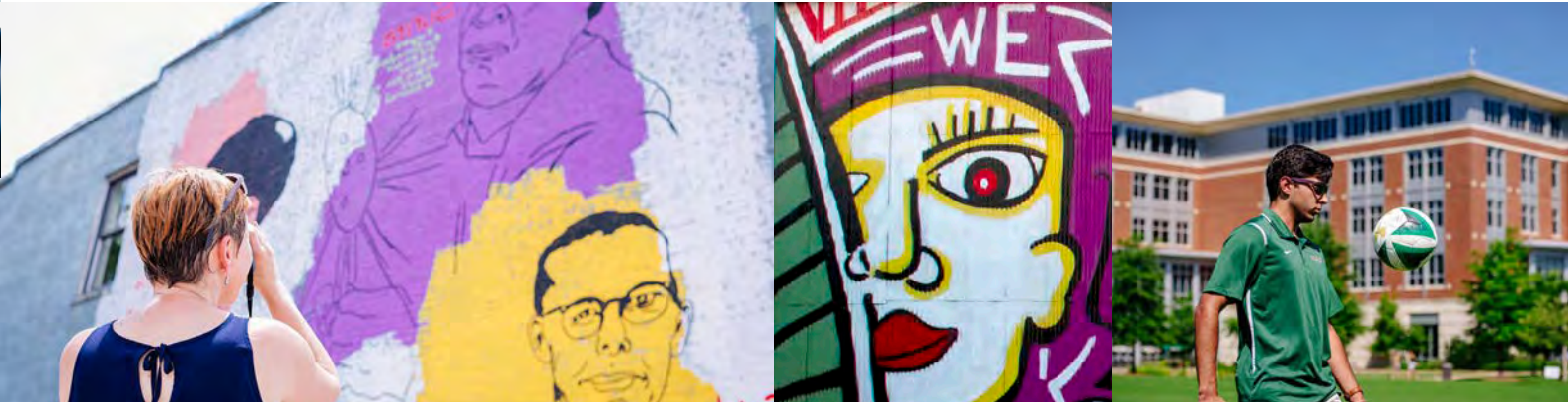
Parks

Birmingham’s already massive greenspace is about to get even bigger, with Oak Mountain State Park acquiring enough land to double the size of New York City’s Central Park. Check out Railroad Park and the 67 acres of the Birmingham Botanical Gardens.

Sports

Baseball, soccer, hockey, golf – Birmingham has it all. Check out Birmingham’s sports scene, from the major league to minor league, and be sure to catch one of UAB’s own highly ranked teams playing!

Condé Nast Traveler
named Birmingham
one of “The Best 22
Places to Go in 2022”



AFFORDABILITY



Even as an emerging travel destination and tech hub, Birmingham is also considered one of the most affordable cities to live in the United States. UAB students can take advantage of a vibrant and growing local community without having to worry about overspending in order to enjoy living in the heart of the city.



World Games The World Games came to Birmingham in July of 2022! Recognized by the International Olympic Committee—the Games featured events such as sport climbing, softball, sumo wrestling, tug of war and jiu-jitsu. Find out more about The World Games 2022 at www.twg2022.com

Diversity

One of 14
universities recognized as a diversity champion by
INSIGHT Into Diversity Magazine 2022

1,160+
international students and 763+ international faculty,
staff and visiting scholars, representing over 100
countries

UAB has more than 100 international
partnerships with universities, hospitals and other
organizations



At the heart of the Civil Rights movement, Birmingham’s history is honored throughout the city with exhibits at the Birmingham Civil Rights Institute and the Negro Southern League Museum on local heroes like Martin Luther King Jr., Rosa Parks and other pivotal figures in American history.

Housing *and* dining

A growing campus

In the past five years, UAB has experienced significant campus growth. More than 10 new buildings have been built since 2015, while others have undergone updates and renovations to modernize them for a new era.



UAB Recreation Center (URec) is ranked **No. 18** among Most Amazing Campus Student Recreation Centers by *Best College Reviews 2021*.



Graduate double room, shared bathroom apartment



Undergraduate suite-style double room, shared bathroom apartment

On-campus housing

Program	REQUIRED*	NOT REQUIRED
Academic English (AE)		■
AE + International Year One (IYO)	■	
IYO	■	
AE + Undergraduate Transfer Program (UTP)		■
UTP		■
Undergraduate Direct	■	
AE + Graduate Pathway (GPW)		■
GPW		■
Integrated Master's Program (IMP)		■
Graduate Direct**		N/A

*On-campus housing is required for the first two semesters.
**On-campus housing is not available for Graduate Direct students.

Meal plan:

All on-campus housing options include meal plans. If you live off campus, you will have the option to purchase a meal plan when you arrive. No on-campus housing is available for the Academic English study plans starting in October.

15+
on-campus dining locations

Student life

- 380+ student clubs and organizations focusing on leadership, cultures, civic engagement, fraternities and sororities, faith, media and more
- 25 club sports including lacrosse, soccer, cricket and rugby
- 18 Division I sports teams

Safety and security

- Your safety is our top priority. UAB makes sure you feel safe with:
- Buildings monitored by electronic access control systems 24 hours per day
 - Residence halls staffed 24/7 and guest check-in required before entry
 - Dedicated on-campus police force that regularly patrols all areas of campus
 - 490+ Help Phones across UAB campus, directly connecting with UAB Police
 - B-ALERT, the university's emergency notification system
 - Confidential counseling services available to all UAB students at no cost



The INTO UAB advantage

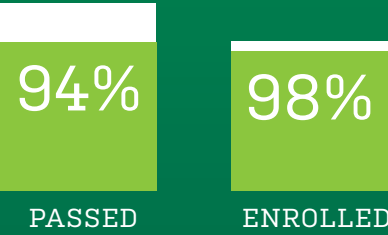
The University of Alabama at Birmingham partners with INTO to create a support system for international students. Our Academic English, International Year One, Undergraduate Transfer Program, Integrated Master's Program and Graduate Pathway programs help you transition to a US degree program. You will enter a fully integrated program where you will learn alongside your American peers to earn academic credits toward your UAB degree while developing your academic skills. Upon successful completion of your program, you will progress to a UAB degree program.

We provide services such as:

- Academic advisors to support your transition to a degree program
- Cultural Connections program
- English tutoring and degree-focused tutoring at no additional cost for students enrolled in a Pathway or Academic English program
- Learning Resource Center
- Personalized academic, language and cultural support
- UAB International Mentors program
- Visa and immigration support
- Workshops designed to enhance the learning experience and cultural skills

UAB student success

Undergraduate and Graduate Progression Rate 2020-2021



94% of students successfully completed the Pathway program and qualified for admission as degree-seeking students. Of those students, 98% enrolled at UAB.

Cutting-edge Programs

It all starts with a bachelor's degree at UAB.

Where can a career in nursing take you?

The *U.S. Bureau of Labor Statistics* reported that the median annual wage for nurse anesthetists, nurse midwives and nurse practitioners was \$117,670 in May 2020.

Pre-nursing

www.uab.edu/nursing

- Our students are trained in a nursing school that is ranked No. 15 for a master's and No. 18 for a doctoral degree in the nation by *U.S. News & World Report 2023*.
- Nation's largest and highest ranking academic medical centers.

97% pass rate on the nursing exam for UAB students. The national average is 82.5% according to NCLEX 2021

Only Accredited School of Public Health in Alabama

Council on Education for Public Health (CEPH)

Public health

www.uab.edu/soph

- UAB research played an important role in creating Remdesivir, a drug widely used to treat COVID-19.
- We administered doses of the vaccine to residents in 62 of Alabama's 67 counties and were one of the first academic medical centers in the country to offer in-house COVID-19 testing.



Multidisciplinary biomedical science

www.uab.edu/graduate/programs/msmbs

- UAB is Alabama's premier institution for biomedical research.
- Students get a comprehensive education in a variety of related fields, including research science, scientific policy, science communication, science education and biomedical sales.

Nurse practitioner:

#1 Healthcare Job in the US

U.S. News & World Report 2022

#2 Best Job in the US

U.S. News & World Report 2022

97% of UAB's Computer Science undergraduates have a job within six months of graduation!

Computer science, cybersecurity and data science

www.uab.edu/cas/computerscience

- Students gain first-hand experience working directly with faculty who conduct research in cybersecurity, data science and big data analytics, biomedical applications and advanced cyber infrastructures.
- Graduates of computer science programs include successful entrepreneurs and technology leaders at Facebook, Google, Microsoft, national labs and more.



Faculty Spotlight: Yuliang Zheng

Known as the father of signocryption technology, an international standard for cybersecurity, Dr. Zheng has overseen UAB's rapidly growing computer science program, helping students secure jobs and research positions in one of the fastest-growing and highest-paying fields.

"Our faculty are top-notch educators and leaders in their fields."

- Yuliang Zheng, Ph.D., UAB Computer Science Chair

Engineering

www.uab.edu/engineering

- UAB's School of Engineering weaves together strengths from other departments, such as medicine and sustainability, to offer engineering programs tailored to today's tech forecast.
- Our collaborative, well-funded biomedical engineering program helps students create products that address global health issues.



#91

Materials Engineering Program

U.S. News & World Report 2022

ENGINEERING STUDENTS ARE GUARANTEED AN INTERNSHIP DURING THEIR TIME AT UAB.



World-class research
turns into world-class careers.



Alumni spotlight: Vien

As a former Data Science student and assistant to Dr. Patrick Murphy, Vien's time at UAB gave him the tools and experience to quickly launch a successful career after graduation.

- Received three job offers before graduation
- Joined Quantalytix, a Birmingham-based startup
- Promoted to CTO just two years after joining the company

"Two years at UAB sharpened my reasoning and analytical skills which enable my immediate contributions to the development of the company. All the hard work and determination really paid off".

Birmingham tech boom

Birmingham is ranked in the top five for up-and-coming tech hotspots, with numerous successful startups launching, such as Shipt, a grocery delivery service, and Daxko, a software for health and wellness organizations. Birmingham was named one of the Best Large Cities to Start a Business in 2022 by *WalletHub*.

UAB career services

- Career fairs
- Career planning tools
- Handshake (job listing website)
- On-campus interviews
- Personalized advising

Internships in Birmingham

At UAB, our career services team can help with internship placement, so you can apply what you learn in your classes to the real world and gain industry experience. Internships are available with UAB's employer partners or within the university itself.

EMPLOYERS OF UAB GRADUATES:

- Apple
- AT&T
- Boeing
- Eli Lilly
- Ford Motor
- Goldman Sachs & Co.
- Google
- Honda
- IBM
- Intel
- Justice Department
- LinkedIn
- Microsoft
- Salesforce.com
- Sprint
- UAB
- United Health Group
- Visa
- Wells Fargo & Co.
- Xerox Corporation



ONE OF THE "BEST LARGE CITIES TO START A BUSINESS"

WalletHub 2022

Innovation and entrepreneurship at UAB

Collat School of Business

www.uab.edu/business

The UAB Collat School of Business is accredited at the bachelor's and master's levels by the Association to Advance Collegiate Schools of Business International, representing the highest standard of achievement for business schools worldwide.

18+ student CEOs have developed their business ideas at the UAB iLab at Innovation Depot

Best Part-time MBA Program in Alabama

U.S. News & World Report 2023



Patrick Murphy, PhD, joined UAB as the Goodrich Endowed Chair for Entrepreneurship and as a professor in the Collat School of Business to expand UAB's entrepreneurial reach. An expert on international entrepreneurship, he currently hosts weekly meetups with entrepreneurs and organizations outside the university to talk with students who share their career aspirations.

"UAB entrepreneurship has become a very popular and well-funded program that is earning international attention."

-Patrick Murphy, PhD

WINNER OF THE MODEL EMERGING PROGRAM AWARD

at the Excellence in Entrepreneurship Education Awards 2022

Innovation culture

At UAB's Bill L. Harbert Institute for Innovation and Entrepreneurship, students can apply for funding, use creative space, find internships and even work with Birmingham's Innovation Depot. With these resources right outside their door, many UAB students have gone on to find their own successful start-ups.

Green and Gold Fund

Led by students in the Collat School of Business, the Green and Gold Fund manages more than \$600,000 in assets for students to perform actual investment portfolio management with real money.

Blazer Hatchery and Hackathon

This student competition and educational experience attracts local investors to hear student pitches, with cash prizes for the winners.



A destination for entrepreneurs

UAB's Bill L. Harbert Institute for Innovation and Entrepreneurship connects scientists and entrepreneurs with industry. UAB is also a founding partner of Innovation Depot, the largest high-tech incubator in the Southeast. Through the UAB iLab, students receive training and resources to help accelerate their business ideas and start their own companies.

Academic Programs

Find Your Degree. With a wide range of subject areas and admissions options, you can find the perfect degree for your chosen career. You can choose to apply for direct entry to the university or for a Pathway program that provides extra academic, language and cultural support. From the day you apply to the day you graduate, we are here to help you succeed every step of the way. Flip to the back cover to learn how to apply.

B = Bachelor's

M = Master's

D = Doctorate

International Year One may lead to any bachelor's degree listed below.

GP

Graduate Pathway program that can lead to this degree is indicated in blue.
This UAB degree is available through direct entry.

IMP

Integrated Master's Program provides customized support to direct entry students.

•

This UAB degree program is available through direct entry.

►

Designated STEM degree by the U.S. Department of Homeland Security. It may vary by degree level.

★

Stipulations apply for admission to this bachelor's program; please visit department website for more information.

International Year One

Indicates the International Year One program that should be taken to progress to an undergraduate academic program. This degree is also available through direct admission.

BU

Business

CS

Computer Science

EN

Engineering

GE

General

PN

Pre-Nursing

PH

Public Health

SC

Science

	B	M	D
College of Arts and Sciences			
African-American Studies	GE		
Anthropology [MA concentration in Peace and Human Rights]	GE	•	
►Applied Mathematics			•
Art [BFA concentration in Art Studio] [BA concentrations in Art Studio and Art History]	GE		
Art History		•	
►Biology [BS concentrations in Integrative Biology, Marine Science and Molecular Biology]	SC	•	•
►Chemistry [BS concentrations in Biochemistry, Chemical Education, Forensic Chemistry, Polymer Chemistry]	SC	•	•
Communication Management		•	
Communication Studies [BA concentrations in Communication Management, Mass Communication (Journalism, Broadcasting, Public Relations), Sports Communication]	GE		
►Cyber Security		GP IMP	
►Computer Science [BA and BS in Computer Science]	CS	GP IMP	•
Criminal Justice [BS concentrations in Computer Forensics, Corrections, Law, Policing, Criminology, Forensic Science, Juvenile Justice]	GE	•	
Cultural Heritage Studies		•	
►Data Science		GP IMP	
Digital Forensics	GE		
English [BA concentrations in Creative Writing, Linguistics, Literature, Professional Writing] [MA concentrations in Literature; Composition and Rhetoric; Creative Writing]	GE	•	
►Forensic Science		•	
General Studies	GE		
Genetics and Genomic Sciences	SC		
History	GE	•	
Pre-Cancer Biology	SC		
Pre-Immunology	SC		
International Studies	GE		
►Mathematics Four tracks leading to a BS in Mathematics: Mathematics (traditional), Mathematical Reasoning, Applied Mathematics and Scientific Computation and Mathematics with Honors	SC	•	
Medical Sociology	GE		•

	B	M	D
Music [BA* concentrations in Music Education Vocal, Music Education Instrumental, Music Technology]	GE		
Musical Theatre [BFA]	GE		
Natural Science	SC		
►Pre-Neuroscience*	SC		
Philosophy [BA concentration in Ethics]	GE		
►Physics [BS concentrations in Advanced Physics, Applied Physics, Biophysics, Computational Physics]	SC	•	•
Political Science [BA concentrations in American Government and Political Theory; Comparative Politics and International Relations]	GE		
Psychology [PhD concentrations in Behavioral Neuroscience; Developmental Psychology; Medical and Clinical Psychology]	GE		•
Public Administration [Dual-degree programs: MPA/Master of Criminal Justice; MPA/MPH; MPA/JD]			GP IMP
Social Work [MSW concentration in Clinical/Medical Social Work]	GE	•	
Sociology [BA concentration in Social Psychology]	GE	•	
Theatre [BA concentrations in General Theatre; Pre-Professional Design and Technology; Pre-Professional Performance]	GE		
World Languages and Literatures [BA concentrations in French, Japanese, Spanish]	GE		
Collat School of Business			
Accounting	BU	•	
Business Administration [MBA concentrations in Business Analytics, Finance, Entrepreneurship; Health Services, Management Information Systems, Marketing] [Dual-degree program: MBA/MPH]			GP IMP
Economics [BS concentrations in Economic Analysis and Policy; Mathematical Economics; Philosophy, Politics and Economics]	BU		
Entrepreneurship	BU		
Finance [BS concentrations in Financial Management; Investments and Institutions; Real Estate]	BU		
Human Resource Management	BU		
Industrial Distribution [BS concentration in Medical Equipment and Supplies Distribution]	BU		
Information Systems [BS concentrations in Cybersecurity Management and Data Analytics]	BU		
Management [BS concentrations in Business Administration, Production and Operations]	BU		
Marketing [BS concentrations in Marketing Management, Digital Marketing, Retail Marketing Management, Marketing Analytics]	BU		

	B	M	D
School of Education			
Arts Education [MAEd concentration in Music and Virtual Arts]		•	
Community Health and Human Services [BS concentrations in Community Health, Human Services]	GE		
Counseling [MA concentrations in Clinical Mental Health, Marriage; Couple and Family Counseling; School Counseling]		•	
Early Childhood and Elementary Education	GE	•	•
Educational Studies [MAEd concentrations in Early Childhood Education, Elementary Education, Secondary Education, Special Education, Physical Education].		•	
Educational Studies in Diverse Populations [PhD concentrations in Health Disparities with Diverse Populations, Metropolitan Education Studies, Pedagogical Studies for Diverse Populations]			•
Educational Leadership [MAEd, EdS, EdD]		•	•
English as a Second Language [MAEd concentrations in Alternative MAEd/ESL, P-12 cert. (ESL, ESL/ French, ESL/Spanish); Traditional MAEd/ESL, P-12 cert. (ESL, ESL/French, ESL/Spanish); TESOL, non-certification (for teaching adult learners)]		•	
Health Education and Health Promotion	GE		•
High School Education	GE		
Kinesiology [BS concentrations in Exercise Bioenergetics, Exercise Science, Sports Physiology and Performance] [MS concentrations in Physical Education, Exercise Physiology]	GE	•	
Reading Education		•	
Special Education [MAEd concentration in Early Childhood Special Education]		•	
Secondary Education [BS concentrations in English Language Arts, General Social Science] [MAEd concentration in Biology, Chemistry, English, French, Language Arts, General Science, General Social Science, History, Mathematics, Physics]	GE	•	
Teaching English to Speakers of Other Languages			GP IMP
School of Engineering			
►Biomedical Engineering [BSBME* concentrations in Biomaterials , Tissue Engineering and Biomechanics]	EN	•	•
►Civil Engineering [BSCE* concentrations in Sustainable Engineering Design and Construction] [MSCE concentrations in Structural Engineering, Construction Engineering Management; Environmental Engineering; and Transportation Engineering]	EN	GP IMP	•
►Computer Engineering			•
►Electrical Engineering	EN		
►Electrical and Computer Engineering		GP IMP	
►Engineering Design	EN		
►Engineering Management		GP IMP	
►Interdisciplinary Engineering			•
►Materials Engineering [BSMTE* concentrations in Biomaterials, Metallurgy, Polymer Matrix Composites]	EN	GP IMP	•
►Mechanical Engineering*	EN	GP IMP	
Neuroengineering			•
School of Health Professions			
Administration Health Services			•
►Multidisciplinary Biomedical Science [MS concentrations in Genetics and Genomics Sciences; Cancer Biology; Bioinformatics; Immunology; Neuroscience Pharmacology and Toxicology]		GP IMP	
►Biomedical and Health Sciences		•	
►Biomedical Sciences [PhD concentrations in Biochemistry and Structural Biology; Cancer Biology; Cell, Molecular and Developmental Biology; Genetics, Genomics and Bioinformatics; Immunology; Microbiology; Neuroscience; Pathobiology, Pharmacology and Physiology]	SC		•

	B	M	D
►Biotechnology		GP IMP	
►Clinical Laboratory Science		•	
Genetic Counseling		•	
Genetics, Genomics, and Bioinformatics			•
Genetics and Genomic Sciences	SC		
Health Administration [MSHA concentrations in Health Administration - Residential, Health Administration - Executive, International Healthcare Management]		•	
Healthcare Simulation		•	
►Health Physics		•	
Healthcare Management [BS concentrations in Clinical Manager, General Manager, Pre-Professional Program]	GE		
►Healthcare Quality and Safety		•	
Nuclear Medicine and Molecular Imaging Sciences		•	
►Nutrition Sciences [MS tracks in Dietetic Internship/Clinical; Research; Lifestyle Management and Disease Prevention; Dietitian Education, Clinical Track - Prior Learning]		•	•
Rehabilitation Science			•
School of Nursing			
Nursing [BSN*, DNP, PhD]		PN	•
School of Public Health			
Bioinformatics		SC	
►Biostatistics		•	•
►Environmental Health Science			•
►Epidemiology			•
Health Behavior			•
Public Health [BS concentrations in Environmental Health Sciences, General Public Health, Global Health Studies] [MPH concentrations in Health Policy and Organization; Health Behavior, Epidemiology, Environmental and Occupational Health; Population Health; Maternal and Child Health Policy and Leadership] [MPH/MBA and MPH/MPA dual-degree program]		PH	GP IMP
School of Medicine			
►Anatomical Science		•	
School of Optometry			
Vision Science		•	•

View program-specific entry requirements at www.intostudy.com/uab/programs

14 INTO The University of Alabama at Birmingham 2023-2024

Academic Programs 15

Undergraduate Admissions

We offer several routes to begin your undergraduate studies. With 57+ bachelor’s degrees, flexible study plans and start dates throughout the year, we’ll help you find the option that’s right for you.

There’s no need to stress about where you start; just focus on where you’re going. You can complete your degree at any stage. We don’t design our programs for one type of student; our programs are built for every kind of student. Where you will begin depends on your grades and English level. Where you end up is where you want to be: graduating with a bachelor’s from UAB.

Direct Entry: If you meet the academic and English language requirements for your degree program, you can apply directly to the University of Alabama at Birmingham.

To apply, you will need the following required documents: declarations, high school transcripts, university transcripts (for transfer applicants), proof of high school graduation (if transferring less than 24 credits), accounting of time when applicable, passport and English test score. An application fee may apply. For more information, visit uab.edu/apply

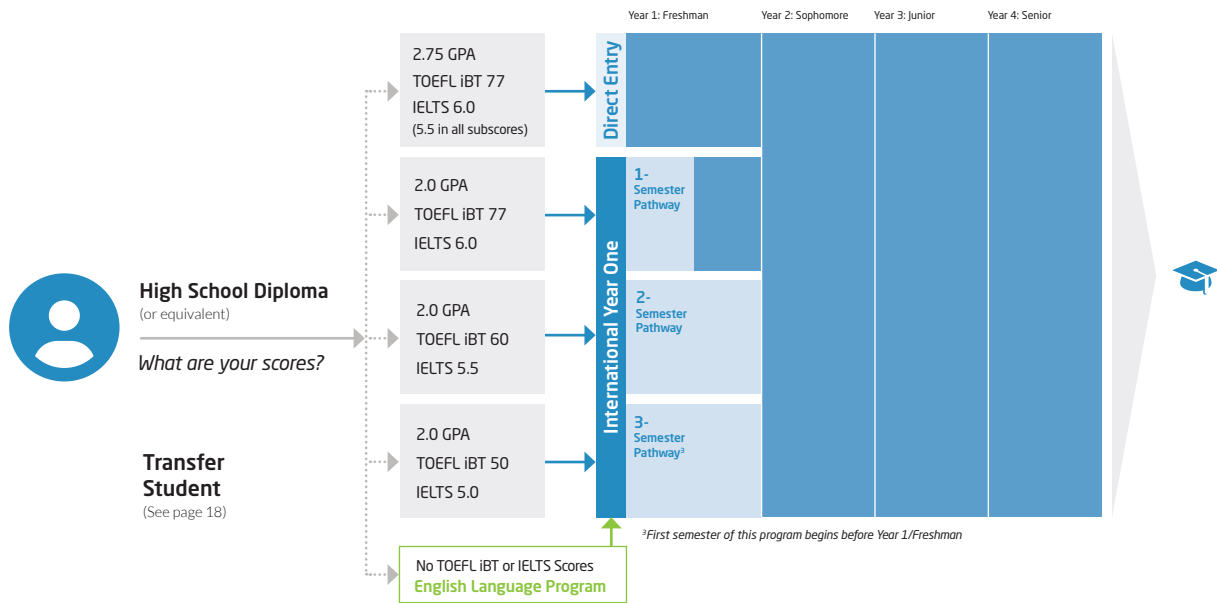
International Year One: International Year One allows you to begin earning credits toward your degree even if you do not meet the academic and English requirements for direct entry. You will receive additional academic, English language and cultural support to help you successfully complete your first year and graduate in the same amount of time as direct entry students. To graduate in this time frame, you may have to enroll in Summer semesters. The length of your degree program is dependent on your course requirements. For more information, visit www.intostudy.com/uab/programs

English Language Programs: If you do not meet the Direct Entry or International Year One language requirements, you can enter our Academic English program to improve your academic

Entry Requirements				
Program	Direct ¹	International Year One		
		1-Semester	2-Semester	3-Semester
Program requirements*	<ul style="list-style-type: none">• High school diploma• Additional requirements may also be required	High school diploma		
Minimum GPA Equivalent	2.75	2.0	2.0	2.0
TOEFL iBT	77	77	60	50
TOEFL Essentials	8.5	8.5	6.5	6.0
IELTS	6.0 (overall with at least 5.5 on each section)	6.0	5.5	5.0
Duolingo	120	120	90	75
PTEA	51	51	44+	41+
Gaokao	120	120	110	105
Academic English	Level 5	Level 5	Level 5	Level 3
Notes: Entry requirements are subject to change and may vary by program. ¹ Meeting the minimum admission requirements does not guarantee admission to some specific programs. SAT or ACT may be required for some programs or if English is your native language.				
Institutional Code	TOEFL: 1856	SAT: 1856	ACT: 0056	
Dates				
Program	Direct	International Year One		
Start Dates	Fall 2023: Aug 2023 Spring 2024: Jan 2024 Summer 2024: May 2024	Fall 2023: Aug 15, 2023 Spring 2024: Jan 3, 2024 Summer 2024: May 1, 2024		

and language skills. Once you have achieved the required language level, you can progress to International Year One or enter your degree program directly. Learn more on page 21.

Undergraduate Degree Program



International Year One Programs

**Estimated credits remaining after Pathway/Total credit hours needed to complete degree. Entry and progression requirements are subject to change and may vary by program.*

Semester(s)	Start Dates			Credits*	Entry Requirements: High School Diploma				Progression Requirements: All GPAs are minimum cumulative	
	Fall	Spring	Summer		GPA	TOEFL iBT	IELTS	Duolingo	GPA	Other
Business										
3-Semester	•	•	•	84-87/120	2.0	50	5.0	75	2.0	<ul style="list-style-type: none">• No W or I grade in a class• Grade of C or better in all classes• 80% minimum in all required ELI courses
2-Semester	•	•	•	88-91/120		60	5.5	90		
1-Semester	•	•	•	104-106/120		77	6.0	120		
Computer Science										
3-Semester	•	•	•	86-87/120	2.0	50	5.0	75	2.0	<ul style="list-style-type: none">• No W or I grade in a class• Grade of C or better in all classes• 80% minimum in all required ELI courses
2-Semester	•	•	•	88-91/120		60	5.5	90		
1-Semester	•	•	•	104-106/120		77	6.0	120		
Engineering										
3-Semester	•	•	•	93-96/128	2.0	50	5.0	75	2.2 ¹	<ul style="list-style-type: none">• No W or I grade in a class• Grade of C or better in all classes• 80% minimum in all required ELI courses• Students must test into at least MA 105 ¹ Minimum 3.2 cumulative UAB GPA for BS in Biomedical Engineering
2-Semester	•	•	•	96-99/128		60	5.5	90		
1-Semester	•	•	•	112-114/128		77	6.0	120		
General										
3-Semester	•	•	•	85-88/120	2.0	50	5.0	75	2.0	<ul style="list-style-type: none">• No W or I grade in a class• Grade of C or better in all classes• 80% minimum in all required ELI courses
2-Semester	•	•	•	88-91/120		60	5.5	90		
1-Semester	•	•	•	104-106/120		77	6.0	120		
Pre-Nursing (BSN)										
3-Semester	•	•	•	91-94/126	2.0	50	5.0	75	3.0 ²	<ul style="list-style-type: none">• No W or I grade in a class• Grade of B or better in all classes• 80% minimum in all required ELI courses ² Minimum 3.2 GPA in Pre-Nursing courses
2-Semester	•	•	•	94-97/126		60	5.5	90		
1-Semester	•	•	•	110-112/126		77	6.0	120		
Public Health										
3-Semester	•	•	•	85-88/120	2.0	50	5.0	75	2.0	<ul style="list-style-type: none">• No W or I grade in a class• Grade of C or better in all classes• 80% minimum in all required ELI courses
2-Semester	•	•	•	88-91/120		60	5.5	90		
1-Semester	•	•	•	104-106/120		77	6.0	120		
Science										
3-Semester	•	•	•	85-88/120	2.0	50	5.0	75	2.0 ³	<ul style="list-style-type: none">• No W or I grade in a class• Grade of C or better in all classes• 80% minimum in all required ELI courses ³ Minimum 2.2 GPA for several majors
2-Semester	•	•	•	88-91/120		60	5.5	90		
1-Semester	•	•	•	104-106/120		77	6.0	120		

[Sample International Year One Program] Engineering			
2-Semester Pathway		Degree Program Components	Program Information
Fall: August 15, 2023 Spring: January 3, 2024 Summer: May 1, 2024		128 credit hour program 29-32 credit hours apply from Pathway 96-99 credit hours remaining toward degree	
Entry Requirements <ul style="list-style-type: none">High school diploma2.0 minimum high school GPA equivalentLanguage requirement<ul style="list-style-type: none">TOEFL iBT 60 orTOEFL Essentials 6.5 orIELTS 5.5 orDuolingo 90 orPTEA 44+ orGaoKao 110	Semester 1	Course Title	Credit Hours
	ELI 101	Academic Writing	3
	ELI 102	Academic Reading	3
	ELI 203	Academic Listening and Speaking	3
	TBD	Core Curriculum Course	3
	MA TBD	Math course based on testing	3-4
	Total		15-16
	Semester 2	Course Title	Credit Hours
	ELI 205	English Skills for Academic Success	3
	TBD	Core Curriculum Course	3
1-Semester Pathway	Degree Program Components		
	Fall: August 15, 2023 Spring: January 3, 2024 Summer: May 1, 2024		128 credit hour program 14-16 credit hours apply from Pathway 112-114 credit hours remaining toward degree
	Semester 1	Course Title	Credit Hours
	ELI 206	Accelerated English Skills for Academic Success	3
	TBD	Core Curriculum Course	3
	TBD	Core Curriculum Course	3
	MA TBD	Math course based on testing	3-4
	TBD	Exploring UAB or FYE Course offered by major	2-3
	Total		14-16
	Semester 2	Course Title	Credit Hours
	ELI 206	Accelerated English Skills for Academic Success	3
	TBD	Core Curriculum Course	3
	TBD	Core Curriculum Course	3
	MA TBD	Math course based on testing	3-4
	TBD	Exploring UAB or FYE Course offered by major	2-3
	Total		14-16



US Undergraduate Education System

To graduate with your 4-year undergraduate degree, you will need to take the following classes:

Core classes
General education courses can include English composition, social sciences, humanities, history, mathematics and natural/physical science. These are typically taken at the beginning of your degree.

Major classes
These classes will be about the specific field of study you choose. They are typically taken toward the last part of your degree.



Undergraduate Transfer Program

Have you earned credits from another college or university and want to transfer to a US university? You can transfer directly into UAB or choose our Undergraduate Transfer Program (UTP), which is specifically designed to support international students through the process of transferring.

Why Choose UTP?

Choosing UTP provides a customized, cost-effective path to your bachelor’s degree. Before your program starts, UAB will provide you with an estimate of credits that will transfer to the university. Once you arrive on campus, our friendly staff will be available to help you transition into life at UAB. You will also have access to helpful resources including academic, English language and cultural support. If you do not meet the English language entry requirements for the UTP, you can enter our Academic English program before progressing to either the UTP or Direct Transfer to UAB.

UTP Benefits

- Transfer of credits from your college or university-level classes to your degree at UAB
- Quick turnaround time for offer (5-7 business days)
- Unofficial Pre-Arrival Credit Evaluation (15 additional business days after receiving offer letter)
- Guaranteed progression to any undergraduate program upon successful completion of your UTP
- Academic advising throughout the program, including progression and student success advisors

Entry Requirements		
Program	Direct Transfer	Undergraduate Transfer Program
Program length	N/A	1-Semester, 2-Semester or 3-Semester
Start Dates	Fall 2023: Aug 2023 Spring 2024: Jan 2024 Summer 2024: May 2024	Fall: Aug 15, 2023 Spring: Jan 3, 2024 Summer: May 1, 2024
GPA	2.0	2.0
TOEFL iBT	77	50-77
TOEFL Essentials	8.5	6.0-8.5
IELTS	6.0 (5.5 subscores)	5.0-6.0
Duolingo	120	75-120
PTEA	51	41-51
GaoKao	120	105-120
Minimum Transfer Credits	24	12
Maximum Transfer Credits	No credit limit (students must meet all additional requirements for their degree)	

Entry requirements are subject to change and vary by program.

UTP Start Dates			
PROGRAM	Fall: Aug 15, 2023	Spring: Jan 3, 2024	Summer: May 1, 2024
Business	●●●	●●●	●●●
Computer Science	●●●	●●●	●●●
Engineering	●●●	●●●	●●●
General	●●●	●●●	●●●
Pre-Nursing	●●●	●●●	●●●
Public Health	●●●	●●●	●●●
Science	●●●	●●●	●●●

● 1-Semester program ● 2-Semester program ● 3-Semester program

Graduate Admissions

UAB offers 100+ graduate degree programs, including 16 that are ranked among the top 25 in the nation by *U.S. News & World Report* 2023. There are multiple ways you can begin your graduate studies.

How you start your program depends on your academic profile and your English level. How you finish your program is exactly how you pictured: graduating with a master’s or PhD from UAB.

Direct Entry: If you meet the academic and English language requirements for your degree program, you can apply directly to UAB. To apply, you will need the following required documents: declarations, university transcripts, proof of degree, CV, 2 letters of recommendation, personal statement and passport. An application fee may apply.

Graduate degrees are competitive, and an extensive review of your application will be done. Please expect a longer turnaround for an admissions decision. For more information, visit www.uab.edu/graduate/admissions/international-applicants

Integrated Master’s Program: Our Integrated Master’s Program (IMP) is designed for students who meet direct entry English requirements but could benefit from academic support. The curriculum consists of three classes that count toward your degree, plus a fourth class that focuses on graduate research, academic success skills and how to navigate the US higher education system. IMP is one semester long and allows students to automatically continue in their degree program with good academic standing. For more information, visit www.intostudy.com/uab/programs

Graduate Pathway: Our Graduate Pathways allow you to begin earning credits toward your degree even if you do not meet the academic and English requirements for direct entry. The program will help build the academic foundation and essential English language skills you need to successfully progress to your master’s degree. For more information, visit www.intostudy.com/uab/programs

English Language Programs: If you do not meet the Direct Entry or Graduate Pathway program language requirements, you can enter our Academic English program to improve your academic and language skills. Once you have achieved the required language level, you can progress to a Graduate Pathway program or enter your degree program directly. Learn more on page 21.

Entry Requirements					
Program	Direct ¹		Graduate Pathway		
	Direct Entry	Integrated Master's Program	2-Semester	3-Semester (Non-Backgroud)*	2-Semester (Non-Backgroud)
Program requirements	• Undergraduate degree • Minimum GRE or GMAT, if required by desired degree program. • The degree program you select may have additional requirements with which you must comply.	4-year undergraduate degree or equivalent	4-year undergraduate degree or equivalent		4-year undergraduate degree or equivalent in Engineering or related field
Minimum GPA Equivalent	3.0	2.5	2.5	2.5	2.5
TOEFL iBT	80	80	65	65	80
TOEFL Essentials	8.5	8.5	7.0	7.0	8.5
IELTS	6.5	6.5	5.5	5.5	6.5
Duolingo	120	120	95	95	120
PTEA	53	53	44	44	53
Academic English	Level 5	Level 5	Level 4	Level 4	Level 5

Notes: Entry requirements are subject to change and may vary by program.
* Students will be admitted with the condition that they successfully place into Calculus I via UAB’s Math Placement Exam. When they confirm, they will be prompted to take the Math Placement Exam and must earn a 76/100 to be fully admitted to the program and issued an I-20.
¹ Meeting the minimum admission requirements does not guarantee admission to the University of Alabama at Birmingham or any specific program. Admission decisions may be based on such factors as the suitability of the applicant’s research interests, the availability of professors in a particular field of research and the number of qualified applicants.

Institutional Code	TOEFL: 1856	GRE: 1856	GMAT: 1CB5561
--------------------	-------------	-----------	---------------

Dates		
Program	Direct	IMP + Graduate Pathway
Start Dates	Fall 2023: Aug 2023 Spring 2024: Jan 2024 Summer 2024: May 2024	Fall 2023: Aug 15, 2023 Spring 2024: Jan 3, 2024 Summer 2024: May 1, 2024

Graduate Pathway Programs

**Estimated credits remaining after Pathway/Total credit hours needed to complete degree.*

Semester	Start Dates			Credits*	Entry Requirements					Progression Requirements All GPAs are minimum cumulative	
	Fall	Spring	Summer		GPA	Undergraduate Degree	TOEFL iBT	IELTS	Duolingo	GPA	Other
Biotechnology											
2-Semester	•	•	•	25/37	2.5	4-year undergraduate degree in biochemistry, biology, biotechnology, chemistry, engineering, mathematics, physics, psychology or sociology	65	5.5	95	3.0	<ul style="list-style-type: none">• No W or I grade in a class• Grade of B or better in all classes• 80% minimum in all required ELI courses
Business Administration [MBA concentrations In Finance; Health Services; Management Information Systems; Marketing, Entrepreneurship; Business Analytics] [MPH/MBA Joint Program with MBA]											
2-Semester	•	•	•	24/36	2.5	4-year undergraduate degree or equivalent No work experience required	65	5.5	95	3.0	<ul style="list-style-type: none">• No W or I grade in a class• Grade of B or better in all classes• 80% minimum in all required ELI courses
Civil Engineering [MSCE specializations in Environmental Engineering; Structural Engineering and Structural Mechanics; Transportation Engineering]**											
2-Semester	•	•	•	21/33	2.5	4-year undergraduate engineering degree in civil, environmental, mechanical, structural, transportation or related field	65	5.5	95	3.0	<ul style="list-style-type: none">• No W or I grade in a class• Grade of B or better in all classes• 80% minimum in all required ELI courses• 3.25 GPA in all engineering courses
Computer Science											
2-Semester	•	•	•	18/30	2.5	4-year undergraduate degree or equivalent in computer science, computer engineering, electrical engineering, mathematics or related field	65	5.5	95	3.0	<ul style="list-style-type: none">• No W or I grade in a class• Grade of B or better in all classes• 80% minimum in all required ELI courses

Entry and progression requirements are subject to change and may vary by program.
**Depending on specialization, relevant degrees in science or engineering will be considered.

Invest in your degree.
Invest in your future.
Invest in you.

With a strong foundation and on-the-job experiences, your education can determine how far you go in your career. Based on your program, you will receive the level of support that corresponds to your academic profile, English language scores and budget.

Our Pathway, Undergraduate Transfer, and Academic English Programs give you access to our Pre-Arrival Success Services, airport pickup and housing coverage.

All prices are estimated from 2022-23 and are subject to change. Please visit www.intostudy.com/en/uab/costs for exact pricing.

What do students get out of campus housing? Enrich your US university experience by living on campus. See page 7.

For details about Terms and Conditions, Country Scales and English Waivers, visit www.intostudy.com/uab/terms

Programs

There are two main semesters per academic year (Fall, Spring) that are 15 weeks for AE students and 16 weeks for Pathway students, including orientation. A shorter Summer semester is 14 weeks for Academic English students and 15 weeks for Pathway students, including orientation.

Scholarships

Find out more about scholarships www.intostudy.com/uab/scholarships

Undergraduate

	International Year One or Undergraduate Transfer Program			Undergraduate Direct Entry	
Program Length	1 Semester	2 Semesters	3 Semesters	1 Semester	2 Semesters
Tuition and Fees	\$18,710	\$32,560	\$41,980	\$14,870	\$29,730
Campus Housing*	\$4,850	\$9,700	\$14,550	\$5,573	\$11,146
Meals*	\$3,970	\$7,940	\$11,910	\$1,858	\$3,716
Insurance	\$1,310	\$3,440	\$3,440	\$1,110	\$2,920

Graduate

	Integrated Master's Program	Graduate Pathway	Graduate Pathway (Non-Background)	Graduate Direct Entry	
Program Length	1 Semester	2 Semesters	3 Semesters	1 Semester	2 Semesters
Tuition and Fees	\$17,850	\$31,040	\$42,890	\$11,630	\$23,250
Insurance	\$1,310	\$3,440	\$3,440	\$1,110	\$2,920

Academic English

Program Length	1 Semester
Tuition and Fees	\$8,520
Campus Housing*	\$4,850
Meals*	\$3,970
Insurance	\$1,310

Campus Housing

Undergraduate and Academic English (AE)
Double occupancy rooms: **\$8,820/semester**

For the first two semesters of enrollment in an INTO UAB program, undergraduate students and AE students with an undergraduate study plan are required to live on campus. The housing price shown is for a double room with a shared bathroom. Prices for housing include breaks during the academic year (spring break, holiday, etc.).

Graduate
Double occupancy rooms: **\$5,600/semester**

On-campus housing is optional for graduate students in the INTO UAB program. On-campus housing is not available for direct entry graduate students.

	Program Group¹	Scholarship Name	Amount	Duration	Eligibility & Learn More	Tuition	Maximum Scholarship Available	Annual Net Tuition with Scholarship²
Undergraduate	IYO, UTP	Regional Scholarships -	\$1,500-\$6,000 per year	One time on the first year/semester	<ul style="list-style-type: none">Limited availability: first come, first servedApplicable to International Year One or Undergraduate Transfer program enrollmentsPersonal Statement or Scholarship Interview may be required for some regionsContact your INTO regional staff or UAB representative for more information	\$32,560	\$6,000	\$26,560
	IYO, UTP	Undergraduate Progression	\$3,000 per year (\$9,000 total)	Up to 3 years (renewable)	<ul style="list-style-type: none">Successful completion of International Year One or Undergraduate Transfer Program and matriculate to UAB the following semesterAchieve minimum GPA 3.75+ during International Year One or University Transfer Program to qualify for \$3,000 per yearMaintain consecutive enrollment at UAB as a full time degree seeking student in an approved undergraduate programRenewable as long as student remains in good academic standing, maintaining a GPA 3.75+	\$29,730	\$3,000	\$26,730
	Direct Entry	UAB International Scholarship	\$7,500 per year (\$30,000 total)	Up to 4 years (renewable)	<ul style="list-style-type: none">No scholarship application required, qualified applicants automatically consideredMust apply and be accepted by UAB no later than April 1 (June intake), May 1 (August intake), and November 1 (January intake)Minimum GPA 3.0+ upon completion of a high school or secondary school outside of the USAApplicable to full time first year Direct-Entry undergraduate international enrollmentsMust currently reside outside of the USA, be non-immigrant and non-resident status, and require a F-1 visaMust not have enrolled in post-secondary workhttps://www.uab.edu/admissions/cost/scholarships/international-students	\$29,730	\$7,500	\$22,230
	Direct Entry	UAB IB Scholarship	\$2,500 per year (\$10,000 total)	Up to 4 years (renewable)	<ul style="list-style-type: none">Must submit scholarship application to UAB by March 1Achieve IB Diploma of 24 or higherApplicable to full time Direct-Entry Undergraduate international enrollmentsEligible candidates will be awarded a \$1,000 scholarship that will be automatically upgraded to \$2,500 after final IB scores are receivedStudent with government scholarships or other external support are not eligible for this awardhttps://www.uab.edu/admissions/cost/scholarships/international-students	\$29,730	\$2,500	\$27,230
Graduate	GPW, IMP	Regional Scholarships	\$1,500-\$6,000 per year	One time on the first year/semester	<ul style="list-style-type: none">Limited availability: first come, first servedApplicable to Graduate Pathway or Integrated Master's program enrollmentsPersonal Statement or Scholarship Interview may be required for some regionsContact your INTO regional staff or UAB representative for more information	\$31,040	\$6,000	\$25,040

All scholarships are subject to change. Scholarship awards may be lower in value than those published here. Scholarship values presented here are based on achieving the highest award available. Scholarships are subject to limited availability, deadlines and other terms and conditions. Please check with your INTO regional office or refer to your scholarship letter for more details. Student on government scholarships or sponsored by an external entity may not be eligible for some of these scholarships.

¹ Program Group relates to the initial program enrolled to qualify for this scholarship.
² Net Tuition is an estimate based on the highest scholarship award applied to the first year of a student's tuition or upon progression.

*Estimated costs and may vary depending on housing and meal plans selected.

Are you an F-1 student? You will need to provide proof of funding in order to get your I-20. Proof of funding is a way a student shows they have sufficient funds (usually via a recent bank statement) to live and study full-time in the US for up to one academic year. This is different from the cost of attendance OR a statement of account. The proof of funding amount will not be an amount that is billed to you and is solely for immigration purposes. To find out more about proof of finances for immigration purposes, visit www.intostudy.com/en/uab/costs

HOW TO APPLY

Choose from two easy ways to apply

1 Apply via your local
INTO educational counselor

2 Apply online
Complete our online application form:

INTO UAB Programs:
apply.intostudy.com/uab

Direct Undergraduate:
uab.apply.intoglobal.com/login

Direct Graduate:
For graduate programs in biotechnology, business administration, data science, cyber security, computer science, engineering management, mechanical/materials/civil/electrical and computer engineering, multidisciplinary biomedical science, public administration and public health:
uab.apply.intoglobal.com/login

All other graduate programs:
uab.edu/graduate/students

UAB THE UNIVERSITY OF
ALABAMA AT BIRMINGHAM

INTO The University of Alabama at Birmingham

Mervyn H. Sterne Library, Floor 2
917 13th Street South
Birmingham, AL 35294
USA

T: +1 205 934 4686
F: +1 205 934 4685
E: UABAdmissions@intoglobal.com

www.intostudy.com/uab

Find us on:

 facebook.com/INTOBlazers

 instagram.com/into_UAB

 twitter.com/INTO_UAB

 myin.to/uabyoutube

 myin.to/linkedin_uab



WeChat



We also offer online programs. For more information, contact your INTO Regional Representative or Education Counselor.

INTO

Through innovative partnerships with leading universities, we expand opportunities for higher education, ensuring success and transforming the lives of our students and staff.

INTO GIVING

Working across the globe, INTO Giving supports projects that increase access to education and improve the quality of teaching and learning. For more information, visit www.into-giving.com

Discover more online

For counselors:
partnerportal.intoglobal.com/uab

For students:
www.intostudy.com/uab

Connect with us



Education counselor's stamp