

The logo for the University of Exeter, featuring the text "UNIVERSITY OF" in a small, sans-serif font above the word "EXETER" in a large, stylized serif font. The background of the entire page is a photograph of two graduates in black academic regalia. A woman in the foreground is smiling and looking to the right, while a man in the background is looking in the same direction.

UNIVERSITY OF  
**EXETER**

# **RUSSELL GROUP EDUCATION FOR THE CAREER-MINDED**

University pathways for international students

**2023-24**

**INTO»UNIVERSITY OF EXETER**



# RUSSELL GROUP EXCELLENCE

## stand-out graduates

Study a pathway that leads to a Russell Group university in a safe, scenic and multicultural environment. The University of Exeter delivers world-class education to high-performing students who are driven to succeed.

Where will your passion take you?



PREPARE FOR SUCCESS AT THIS  
WORLD-RENOWNED UNIVERSITY

Top 170 university in the world<sup>1</sup>  
13<sup>th</sup> in the UK<sup>2</sup>



REACH YOUR POTENTIAL  
WITH OUTSTANDING TEACHING

84% of INTO University of Exeter students  
achieve a 1:1 or 2:1 in their degree<sup>3</sup>



BECOME A STAND-OUT GRADUATE  
WITH TOP CAREER PROSPECTS

Top 15 UK university 'most targeted'  
by employers<sup>4</sup>



DISCOVER YOUR HOME  
AWAY FROM HOME IN A  
STUDENT-FRIENDLY CITY

Exeter is one of the top 5 safest cities  
in England and Wales<sup>5</sup>



### WHY CHOOSE INTO UNIVERSITY OF EXETER?

Studying at INTO University of Exeter opens up a world of opportunities. Your future begins at our study centre – a welcoming space for international students on the University's beautiful Streatham Campus.

Make friends, develop your English language skills and enjoy specialist support to prepare you for your degree at the University of Exeter.

**97%**

overall student  
satisfaction<sup>6</sup>

**93%**

of all pathway students  
were eligible to progress in 2020/21



Located in the heart of the beautiful green Streatham Campus, this is a truly ideal, safe environment for international students. Our students are highly satisfied with the support they receive during their time with us and feel prepared to excel in one of more than 150 world-class degrees at the University of Exeter.

Sarah McCurrie  
Interim Centre Director,  
INTO University of Exeter

<sup>1</sup> QS World University Rankings 2023

<sup>2</sup> The Times and The Sunday Times Good University Guide 2023

<sup>3</sup> Based on INTO University of Exeter undergraduate students who graduated in 2021

<sup>4</sup> High Fliers Graduate Market in 2022

<sup>5</sup> The Complete University Guide 'How Safe is Your City?' 2022

<sup>6</sup> INTO Annual Student Experience Survey 2022



# A HISTORY OF SUCCESS

Study at Exeter and you'll join a historic institution with a reputation for graduate employability. The University maintains strong relationships with global firms and is among the top 15 UK higher education institutions targeted by top employers<sup>1</sup>. That's because Exeter students achieve excellent results.

## YOUR FUTURE CAREER

Offering more than a dozen employability initiatives and expert ongoing support, the University of Exeter is the perfect place to kick-start your career.

You'll benefit from:

- A top 10 UK university careers service<sup>2</sup>
- Links to the Career Development Institute to enhance your career skills
- Dedicated support for careers in education, sustainability and international industries
- Close links with more than 9,000 UK and global employers
- Regular careers fairs targeting a wide range of sectors
- Valuable industry work experience options
- The Exeter Award – an extracurricular employability achievement award that can boost your employability prospects

Exeter graduates have gone on to work for:

AMAZON  
APPLE  
BMW  
DELOITTE  
GLAXOSMITHKLINE  
GOLDMAN SACHS  
JP MORGAN  
MICROSOFT  
MORGAN STANLEY  
PFIZER  
PWC  
UNILEVER

## 89%

Exeter's **89% employment rate<sup>3</sup>** shows just how effective its degrees are for your employability prospects.

## 95%

Degrees here help you gain the skills needed to compete in the global job market, with **95% of students** undertaking work experience.



If you really want to work in the UK, you have to put in the effort from day one. My placement year was a turning point for me. I had exposure to what the job market and working world were really like. I'd been dreaming of working in the UK for so long and now it's come true. If I didn't study with INTO, I wouldn't have the job that I have now.

**Hugo, Hong Kong**

Commercial Graduate Trainee, at EDF (UK)

- International Foundation
- BA (Hons) Management and Marketing with Industrial Experience



My company teaches girls how to code and provides bootcamps in programming, data science and web development. I strongly believe that we need more women in this sector, and I wanted to pass on my skills to other girls. Take advantage of the mentorship available at university. Remember that your hard work makes you into the person you want to be.

**Deema, Saudi Arabia**

CEO at Code For Girls

- International Foundation
- BSc (Hons) Computer Science with Proficiency in Spanish



On the day that I got my job offer, I was super excited. All my hard work was worth it. When speaking to people who achieved what I wanted to achieve, that really accelerated my application. I was given the tips that they had learnt from their own experience that I wouldn't have known otherwise.

**Sara, Bahrain**

Direct Lending Manager at M&G Investments

- International Year One
- BSc (Hons) Business Economics



Hear Sara's story



<sup>1</sup> High Fliers Research 2022

<sup>2</sup> StudentCrowd 2021

<sup>3</sup> 89% of graduates in or due to start employment or further study 15 months after graduation, based on full-time, first-degree, UK-domiciled graduates, HESA Graduate Outcomes Survey 2018/19



# A WORLD-CLASS EDUCATION

## for the career-focused

Rewarding careers are built on knowledge, true passion and the desire to do better. The University of Exeter is committed to your future, with internationally-recognised teaching and world-leading research in the UK top 20<sup>1</sup>. Join more than 25,000 students, including 5,450 international students from 140 different countries, all of whom share the same goal – to succeed.

### EXETER INTERNATIONAL FOUNDATION

A pathway as diverse as your interests. Choose from ten mix and match modules as part of your programme. Or select specific modules to graduate with a subject qualification in Business, Science and Engineering, or Humanities and Social Sciences. Better yet, there are no visa restrictions if you decide to change track.

**15 subject areas in the QS World Top 100<sup>5</sup>**, including psychology, politics and environmental sciences.

### BUSINESS

Learn how to lead, strategize and improve the world at the renowned University of Exeter Business School.

- One of fewer than **100 business schools** globally to be **triple accredited** by EQUIS, AMBA and AACSB.
- **=10th in the UK** for Accounting and Finance<sup>2</sup>.
- **11th in the UK** for Marketing<sup>3</sup>.
- **Future focused**, with courses in environmental sustainability, responsible leadership and technological transformation.
- **Industrial work experience options** on 100% of undergraduate progression degrees.

#### Business facilities include:

- More than 15 lecture theatres and teaching rooms spread across four buildings, including the Xfi Centre for Finance and Investment.
- The Thomson Reuters Lab – a specialist IT centre for financial analysis.
- The Exeter Centre for Leadership – a unique research facility that explores new approaches to responsible management.
- The Collaboratory – a purpose-built area for business engagement.
- Dedicated study areas for MBA students.

### ENGINEERING

Where science meets creativity. Develop critical thinking skills to help drive change and solve problems.

- **8th in the UK** for General Engineering<sup>3</sup> and **9th in the UK** for Mechanical Engineering<sup>2</sup>.
- **Flexible learning options** – choose your specialism after your first year of study.
- Strong business focus, with **entrepreneurship and management pathways** available.
- **Industry work placements** available to all undergraduate students<sup>4</sup>.
- Graduates have gone on to work for **EDF Energy, Nestlé** and the **Ministry of Defence**.
- **£6.5 million** upgrade to engineering facilities.

#### Engineering facilities include:

- Specialised laboratories including electronics, materials and thermodynamics.
- Offshore test sites for renewable energy research.
- Industrial equipment like 3D printers, laser cutters and electron microscopes.
- A recently refurbished building with new labs and collaboration spaces.

### PSYCHOLOGY

Explore new insights into human behaviour and pursue a career in a field like healthcare, social work or research.

- **Top 70 in the world** for Psychology<sup>5</sup>.
- Degree accreditation by the **British Psychological Society**.
- 99% of research is of international quality<sup>1</sup>.
- **Flexible course options**, including a psychology and sport science degree.
- A **friendly, collaborative learning environment** led by recognised experts.
- Graduates have gone on to work for the **BBC, NHS** and **Ipsos MORI**.

#### Psychology facilities include:

- Dedicated laboratories for psychopharmacology, biomedical analysis and biobehavioural study.
- A working clinic for mood disorders, providing therapy to residents of Exeter.
- Cutting-edge medical equipment, including an MRI scanner.



All INTO and University of Exeter students also have access to:

**The Forum** – home to useful facilities including a 24/7 three-floor library, a Student Services Centre, food outlets and learning spaces

**Sports Park** – outstanding sports facilities, including a swimming pool, golf centre, football pitches and courts

**Northcott Theatre** – an on-campus venue where you can watch music and theatre productions

**Bill Douglas Cinema Museum** – one of the biggest TV and film material collections in the UK

**Multi-faith Chaplaincy** – a safe space for personal and group worship



<sup>1</sup> Research Excellence Framework 2021

<sup>2</sup> Guardian University Guide 2022

<sup>3</sup> The Complete University Guide 2022

<sup>4</sup> On most undergraduate engineering degrees except BEng (Hons) Engineering and BEng (Hons) Renewable Energy Engineering

<sup>5</sup> QS World University Rankings by Subject 2022



# YOUR INTERNATIONAL STUDY CENTRE

Located opposite the Forum – a £48 million study and social space – the INTO Centre will be the base for your studies. This is where you'll attend classes, socialise with classmates and receive dedicated support from the Student Services team.

Experience university-style teaching in the Centre's large lecture theatre, plus explore your chosen subject in specialist facilities such as science or computer labs.

## STREATHAM CAMPUS: A BOTANICAL WONDERLAND

You'll be based at the Streatham Campus during your INTO course. Surrounded by beautiful parkland and home to cutting-edge facilities, this inspirational campus is the ideal environment to live and study in. It's also a registered botanical garden, home to plant collections such as the South American Azara shrub. Explore the lakes and woodland trails within this 300-acre green wonderland for the ideal break between studies.

## SPECIALIST SUPPORT FOR INTERNATIONAL STUDENTS

We're here to help you feel at home. INTO Exeter students say they're highly satisfied with the support they receive during their studies. You can expect:

- Help opening a bank account and registering with a doctor
- Transport from the airport (at an additional cost)
- Welcome Week to help you make friends and get to know Exeter
- 24/7 on-site staff support, including an out-of-hours emergency phone number
- Additional support for students under 18



INTO staff are keen to support every student. It's a very open-minded environment where my feelings were considered. I received lots of support with my travel between Colombia and the UK, with updates from the Welcome Team saying where I needed to be after my flight. I was supported the entirety of my trip.

Alvaro, Colombia  
International Foundation  
BSc (Hons) Mathematics with Finance

95%

student satisfaction  
for student services  
(INTO Annual Student  
Experience Survey 2022)

## INTO CENTRE FACILITIES

Depending on your pathway programme, you'll have access to:

- A 110-seat multi-purpose lecture theatre where you'll experience university-style lectures
- A well-equipped science laboratory for hands-on learning
- Two multimedia rooms with access to GeoGebra, Anaconda and online SolidWorks
- Study spaces and a café to meet and socialise with classmates

## YOUR HOME IN EXETER

Be part of student life from day one with INTO University of Exeter's self-catered student residences, just a 15-minute walk from the INTO Centre. Choose from three comfortable room types:

### Standard ensuite

Single bedroom with private bathroom and shared kitchen

### Shared studio

Two separate bedrooms with shared bathroom and kitchenette

Example floor plan – shared studio



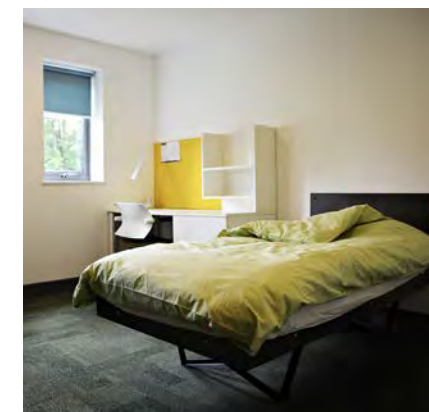
### Studio

Single bedroom with private bathroom and kitchenette



## All residents enjoy:

- Safe, modern and furnished rooms
- Bedding, tableware and kitchen utensils provided
- An on-site shop, café and laundry facilities
- 24-hour security and secure building access
- Free Wi-Fi
- Support from on-site INTO staff



Living in the INTO accommodation at Duryard was the best decision ever. It felt like a close-knit family. I used to always run into people doing laundry or walking to the store nearby. It was nice to live in a community with everyone right next to you. It felt safe and secure.

Dristi, India  
International Year One  
BSc (Hons) Psychology





# EXETER:

## a modern city with a rich history

Exeter is recognised for being the best place to live in the UK<sup>1</sup> as well as one of the safest<sup>2</sup>. It's a lively, vibrant city set among rural Devon countryside.

Close to sandy beaches, fossil cliffs and beautiful national parks, this is a great base for adventurers. It's also an energetic hub of activity.

Experience the city's history as you explore its cobbled streets and Roman ruins. Or check out Exeter's many restaurants, retail stores and thriving arts scene for endless entertainment.

### WHAT OUR STUDENTS SAY THEY LOVE ABOUT EXETER



Beautiful campuses



Compact city with  
everything you need



Lots of societies – there's  
something for everyone



Easy to travel around



Feeling safe

### THINGS TO DO IN EXETER

This inviting city has both ancient landmarks and modern amenities.

You'll discover:

- Historical sites, like winding medieval alleyways and a magnificent 15th-century Gothic Cathedral
- The Quayside – a tranquil waterside spot with restaurants serving local and international cuisine
- Princesshay – a modern shopping centre with more than 65 brands, including Apple and Superdry
- Entertainment venues such as the Exeter Phoenix and the Exeter Corn Exchange, where you'll enjoy concerts, art displays, movies, comedy and theatre shows

### EXPLORING BEYOND EXETER

Study at Exeter to experience a unique blend of city and rural living. The city is surrounded by natural beauty just waiting to be explored, including:

- Dartmoor – Devon's huge national park, known for its rolling hills and stunning scenery
- Beaches – Dawlish Warren and Exmouth beaches, just a short drive or train ride from Exeter
- Characterful local towns, including historic Totnes and picturesque Dartmouth
- Cornwall – a region famous for its well-preserved castles and award-winning beaches



### CAREERS IN EXETER

Exeter promises a bright future for graduates. The city boasts one of the fastest-growing economies in the UK<sup>3</sup>, with rapid expansion expected in digital technology, environmental science and advanced engineering. Whatever your specialism, you'll find a wealth of local employment opportunities. Exeter is home to Pennon Group, Midas Group and the Met Office, as well as the Royal Devon NHS Trust.



Why do students  
love living in Exeter?

**It's one of the  
happiest places  
to live in the UK!<sup>4</sup>**



### YOUR UK ADVENTURE STARTS HERE

**London** just over two hours by train

**Bristol** one hour by train

**Penryn** three hours by train



When you walk through Exeter, it has a mix of modern and classical. For me, the best part is the scenery. Almost everywhere you go, you'll see fresh green spaces. Compared to universities in big cities, Exeter is very calm and relaxing.

**Enzo, Philippines**  
CEO at Oven Depot Ph  
• International Year One  
• BA (Hons) Management and Sustainability

<sup>1</sup> Arcadis 'Investing In Britain: Cities Built for the Future' report 2018

<sup>2</sup> Times Higher Education Student Experience Survey 2018

<sup>3</sup> Irwin Mitchell 'UK Powerhouse' report May 2022

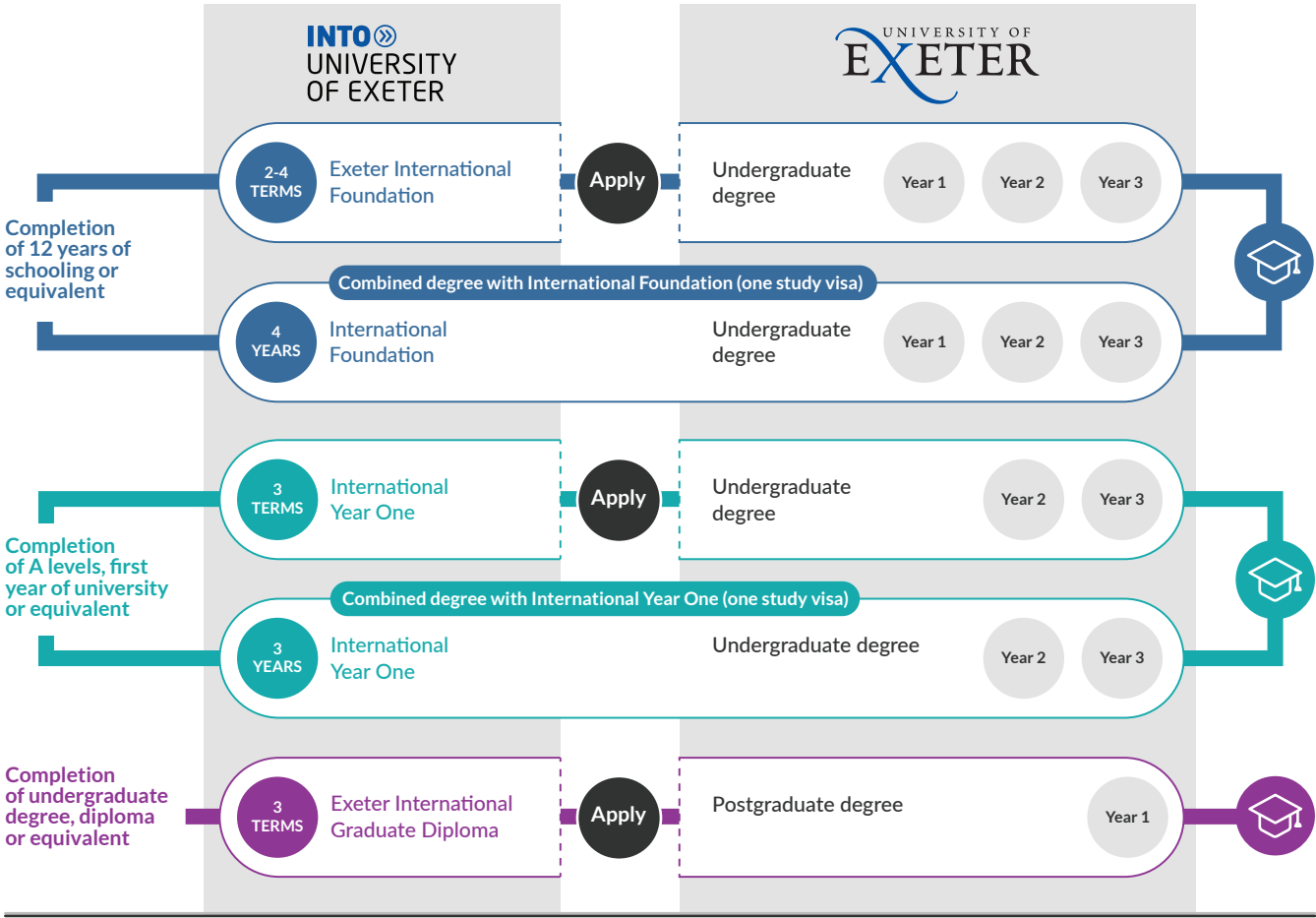
<sup>4</sup> Rightmove Happy at Home Index 2021



Choosing your course

Prepare for your university degree with our academic courses in a range of subject pathways, designed in partnership with the University of Exeter. This is what your study journey could look like.

Academic courses



English language courses

Improve your English level fast with tailored, personalised support.

Academic English

- An immersive course with small class sizes that will give you rapid progress of 0.5 to 1.0 IELTS point per term.
- More than language learning – develop the academic skills needed for successful UK study.
- Take as a standalone course or combine with an academic study plan for a seamless transition to further studies.
- Online and on-campus courses with flexible start dates from January to October. Study lengths vary from 1 to 4 terms.

For more information, visit:  
[www.intostudy.com/exeter/ae](http://www.intostudy.com/exeter/ae)

Pre-sessional English

- For University of Exeter offer holders. Improve your English language skills to the level required for your degree in a 6, 10 or 18-week course. Start dates range from April to November.

For more information, visit:  
[www.intostudy.com/exeter/pse](http://www.intostudy.com/exeter/pse)

Undergraduate degree with preparation programme

16 years and above.

- Year 1 of study plan  
4 years: Sep or Jan
- 4 years: IELTS 5.5  
(with a minimum of 5.5 in all subskills) or equivalent\*.

- Year 1 of study plan  
3 years: Sep
- 3 years: IELTS 6.0  
(with a minimum of 5.5 in all subskills) or equivalent\*.

- Age requirement
- Start dates
- English requirements

Complete your INTO preparation programme and University of Exeter undergraduate degree with a single CAS and one study visa, with no need to renew for the duration of your studies.

Undergraduate degree with International Foundation

Choose from 5 degrees.



Develop your understanding of academic subjects related to your chosen degree as you improve your English language and study skills. Benefit from knowing you'll continue directly to Year 1 of your degree, provided you meet the academic requirements after the first year of your study plan.

Year 1 of study plan - What will I study?

You'll study all of these core modules:

- Current Global Issues (30 credits)
- Foundation Academic English (30 credits)
- Mathematics and Statistics (30 credits)
- Physics, Engineering and Applied Mathematics (30 credits)

Plus one of the following:

- Biology and Chemistry (30 credits)
- Physics, Engineering and Applied Mathematics (30 credits)
- Psychology and Physiology (30 credits)

You'll need to earn 120 credits from all module options.

Undergraduate degree with International Year One

Choose from 5 degrees.



Develop your understanding of subjects related to your chosen degree at the College of Engineering, Mathematics and Physical Sciences, as you improve your English language and study skills with expert INTO tuition. Benefit from knowing that you'll continue directly to Year 2 of your degree, provided you meet the academic requirements after the first year of your study plan.

Year 1 of study plan - What will I study?

You'll study all of these core modules:

- Core Engineering (Mechanics, Materials and Electronics) (15 credits)
- Engineering Mathematics and Scientific Computing (30 credits)
- English Language and Study Skills for Engineering (30 credits)
- Multi-Disciplinary Challenge Project (30 credits)

Plus one of the following, depending on chosen degree:

- Fundamentals of Mechanics and Electronics (15 credits)
- Fundamentals of Mechanics and Materials (15 credits)

You'll need to earn 120 credits from all module options.

Undergraduate degree with International Foundation progression degree options

Degree	Specific requirements	English level	Academic grade
Civil Engineering BEng (Hons)	60% in Mathematics and Statistics and 60% in either Biology and Chemistry, Physics, Engineering and Applied Mathematics, or Psychology and Physiology.	65%	63%
Electronic Engineering BEng (Hons)	60% in Mathematics and Statistics and 60% in either Biology and Chemistry, Physics, Engineering and Applied Mathematics, or Psychology and Physiology.	65%	63%
Engineering and Management BEng (Hons)	60% in Mathematics and Statistics and 60% in either Biology and Chemistry, Physics, Engineering and Applied Mathematics, or Psychology and Physiology.	65%	63%
Engineering BEng (Hons)	60% in Mathematics and Statistics and 60% in either Biology and Chemistry, Physics, Engineering and Applied Mathematics, or Psychology and Physiology.	65%	63%
Mechanical Engineering BEng (Hons)	60% in Mathematics and Statistics and 60% in either Biology and Chemistry, Physics, Engineering and Applied Mathematics, or Psychology and Physiology.	65%	63%

Undergraduate degree with International Year One progression degree options

Degree	Specific requirements	English level	Academic grade
Civil Engineering BEng (Hons)	Academic average to include Fundamentals of Mechanics and Materials module.	65%	50%
Electronic Engineering BEng (Hons)	Academic average to include Fundamentals of Mechanics and Electronics module.	65%	50%
Engineering and Management BEng (Hons)	Academic average to include Fundamentals of Mechanics and Materials module.	65%	50%
Engineering BEng (Hons)	Academic average to include Fundamentals of Mechanics and Materials module.	65%	50%
Mechanical Engineering BEng (Hons)	Academic average to include Fundamentals of Mechanics and Materials module.	65%	50%

Scan the QR codes or visit [www.intostudy.com/exeter/courses](http://www.intostudy.com/exeter/courses) to find out more about each programme, including a full list of progression options.

\* IELTS for UKVI or equivalent Secure English Language Test is required for visa purposes

16 years and above.

2-term: Mar  
3-term: Sep or Jan  
4-term: Jun or Sep

2-term: IELTS 6.0  
(with a minimum of 5.5 in all subskills) or equivalent.  
3-term: IELTS 5.0  
(with a minimum of 5.0 in writing and 4.5 in all other subskills) or equivalent.  
4-term: IELTS 4.5  
(with a minimum of 4.5 in writing and 4.0 in all other subskills) or equivalent.

- Age requirement
- Start dates
- English requirements

Improve your subject knowledge and English language skills to the level you need to begin Year 1 of an undergraduate degree at the University of Exeter.

Exeter International Foundation – FND

Choose from 150+ degrees.



Progress to 150+ different degrees. Choose from ten mix-and-match modules for a flexible study plan. Or study specific modules required to progress to your chosen degree. An accelerated 2-term option is available to students with a higher level of English – or choose the 4-term option for extra English language support.

What will I study?

You'll study all of these core modules:

- Foundation Academic English (30 credits)
- Current Global Issues (30 credits)

Plus two of the following modules (there may be restrictions on your choice depending on progression degree):

- Business Management and Accounting (30 credits)
- Mathematics and Statistics (30 credits)
- Biology and Chemistry (30 credits)
- Economics and Finance (30 credits)
- Media, Film and Literature (30 credits)
- Physics, Engineering and Applied Mathematics (30 credits)
- Social and Environmental Sciences (30 credits)
- Psychology and Physiology (30 credits)

You'll need to earn 120 credits from all module options.

During your International Foundation programme, we'll help you choose your University of Exeter degree. Just some of the degrees you could study include:

Degree	Specific requirements	English level	Academic grade
Business			
Accounting and Business BSc (Hons) <b>S</b>		65%	67%
Accounting and Finance BSc (Hons) <b>S</b>		65%	67%
Business BSc (Hons) <b>P</b> <b>I</b> <b>S</b> <sup>†</sup>		65%	63%
Business Analytics BSc (Hons)		65%	67%
Business and Laws BBL (Hons) <b>P</b> <b>I</b> <b>S</b> <sup>†</sup>		65%	63%
Business and Management BSc (Hons) <b>I</b> <b>S</b> <sup>†</sup>		65%	67%
Business Economics BSc (Hons) <b>I</b> <b>S</b> <sup>†</sup>		65%	67%
Economics BSc (Hons) <b>I</b> <sup>†</sup>	60% in Mathematics and Statistics.	65%	67%
Economics and Finance BSc (Hons) <b>I</b> <b>S</b> <sup>†</sup>	60% in Mathematics and Statistics.	65%	67%
Marketing and Management BSc (Hons) <b>I</b> <b>S</b> <sup>†</sup>		65%	67%
Mathematics BSc (Hons) *	65% in Mathematics and Statistics.	65%	67%
Mathematics with Accounting BSc (Hons) * <b>I</b> <sup>†</sup>	65% in Mathematics and Statistics.	65%	67%
Mathematics with Economics BSc (Hons) * <b>I</b> <sup>†</sup>	65% in Mathematics and Statistics.	65%	67%
Mathematics with Management BSc (Hons) * <b>I</b> <sup>†</sup>	65% in Mathematics and Statistics.	65%	67%
Science and Engineering			
Animal Behaviour BSc (Hons) <b>P</b> <b>I</b> <b>S</b> <sup>†</sup>	60% in either Biology and Chemistry; Mathematics and Statistics; Physics, Engineering and Applied Mathematics; or Psychology and Physiology.	65%	63%
Biochemistry BSc (Hons) <b>I</b> <b>S</b> <sup>†</sup>	60% in Biology and Chemistry.	65%	63%
Biological and Medicinal Chemistry BSc (Hons) <b>I</b> <b>S</b> <sup>†</sup>	60% in Biology and Chemistry.	65%	63%
Biological Sciences BSc (Hons) <b>I</b> <b>S</b> <sup>†</sup>	60% in Biology and Chemistry and 60% in either Mathematics and Statistics; Physics, Engineering and Applied Mathematics; or Psychology and Physiology.	65%	63%
Civil Engineering BEng (Hons) * <b>I</b> <sup>†</sup>	60% in Mathematics and Statistics and 60% in either Biology and Chemistry; Physics, Engineering and Applied Mathematics; or Psychology and Physiology.	65%	63%
Computer Science BSc (Hons) * <b>I</b> <sup>†</sup>	60% in Mathematics and Statistics.	65%	63%
Conservation Biology and Ecology BSc (Hons) <b>P</b> <b>I</b> <b>S</b> <sup>†</sup>	60% in either Biology and Chemistry; Mathematics and Statistics; Physics, Engineering and Applied Mathematics; or Psychology and Physiology.	65%	63%
Data Science BSc (Hons) *	60% in Mathematics and Statistics.	65%	65%
Electronic Engineering BEng (Hons) * <b>I</b> <sup>†</sup>	60% in Mathematics and Statistics and 60% in either Biology and Chemistry; Physics, Engineering and Applied Mathematics; or Psychology and Physiology.	65%	63%

Degree	Specific requirements	English level	Academic grade
Engineering BEng (Hons) * <b>I</b> <sup>†</sup>	60% in Mathematics and Statistics and 60% in either Biology and Chemistry; Physics, Engineering and Applied Mathematics; or Psychology and Physiology.	65%	63%
Engineering and Entrepreneurship BEng (Hons)	60% in Mathematics and Statistics and 60% in either Biology and Chemistry; Physics, Engineering and Applied Mathematics; or Psychology and Physiology.	65%	63%
Engineering and Management BEng (Hons) * <b>I</b> <sup>†</sup>	60% in Mathematics and Statistics and 60% in either Biology and Chemistry; Physics, Engineering and Applied Mathematics; or Psychology and Physiology.	65%	63%
Environmental Science BSc (Hons) * <b>P</b> <b>I</b> <b>S</b> <sup>†</sup>	60% in either Biology and Chemistry; Mathematics and Statistics; Physics, Engineering and Applied Mathematics; or Psychology and Physiology.	65%	63%
Evolutionary Biology BSc (Hons) <b>P</b> <b>I</b> <b>S</b> <sup>†</sup>	60% in either Biology and Chemistry; Mathematics and Statistics; Physics, Engineering and Applied Mathematics; or Psychology and Physiology.	65%	63%
Exercise and Sport Sciences BSc (Hons) * <b>S</b>	60% in either Biology and Chemistry; Mathematics and Statistics; Physics, Engineering and Applied Mathematics; or Psychology and Physiology.	65%	63%
Geology BSc (Hons) * <b>P</b>	60% in each of two modules from Biology and Chemistry; Mathematics and Statistics; Physics, Engineering and Applied Mathematics; or Psychology and Physiology.	65%	63%
Human Biosciences BSc (Hons)	60% in Biology and Chemistry and 60% in either Mathematics and Statistics; Physics, Engineering and Applied Mathematics; or Psychology and Physiology.	65%	63%
Human Sciences BSc (Hons)		65%	63%
Marine Biology BSc (Hons) * <b>P</b> <b>I</b> <b>S</b> <sup>†</sup>	60% in either Biology and Chemistry; Mathematics and Statistics; Physics, Engineering and Applied Mathematics; or Psychology and Physiology.	65%	63%
Marine Science BSc (Hons) * <b>P</b> <b>I</b> <b>S</b> <sup>†</sup>	60% in each of two modules from Biology and Chemistry; Mathematics and Statistics; Physics, Engineering and Applied Mathematics; or Psychology and Physiology.	65%	63%
Mechanical Engineering BEng (Hons) * <b>I</b> <sup>†</sup>	60% in Mathematics and Statistics and 60% in either Biology and Chemistry; Physics, Engineering and Applied Mathematics; or Psychology and Physiology.	65%	63%
Medical Sciences BSc (Hons) <b>I</b> <sup>†</sup>	65% in Biology and Chemistry and 60% in either Mathematics and Statistics; Physics, Engineering and Applied Mathematics; or Psychology and Physiology.	65%	63%
Natural Sciences BSc (Hons) *	65% in Mathematics and Statistics and 65% in either Biology and Chemistry; or Physics, Engineering and Applied Mathematics.	65%	67%
Neuroscience BSc (Hons) * <b>I</b> <sup>†</sup>	Two modules out of Biology and Chemistry; Mathematics and Statistics; Physics, Engineering and Applied Mathematics; and Psychology and Physiology, with one module scoring a minimum of 60% and the second scoring a minimum of 65%	65%	63%
Nutrition BSc (Hons)	60% in Biology and Chemistry and 60% in either Mathematics and Statistics; Physics, Engineering and Applied Mathematics; or Psychology and Physiology.	65%	63%
Physics BSc (Hons)	Mathematics and Statistics; and Physics, Engineering and Applied Mathematics to be taken with a minimum of 60% in one module and 65% in the other.	65%	67%
Psychology BSc (Hons) <b>S</b>	65% in either Biology and Chemistry, Mathematics and Statistics; Physics, Engineering and Applied Mathematics; or Psychology and Physiology	65%	67%
Renewable Energy BSc (Hons) <b>P</b>	60% in either Biology and Chemistry, Mathematics and Statistics; Physics, Engineering and Applied Mathematics; or Psychology and Physiology.	65%	63%
Sport and Exercise Medical Sciences BSc (Hons)	65% in Biology and Chemistry and 60% in either Mathematics and Statistics; Physics, Engineering and Applied Mathematics; or Psychology and Physiology.	65%	63%
Zoology BSc (Hons) * <b>P</b> <b>I</b> <b>S</b> <sup>†</sup>	60% in either Biology and Chemistry; Mathematics and Statistics; Physics, Engineering and Applied Mathematics; or Psychology and Physiology.	65%	63%

Humanities and Social Science			
Archaeology BA (Hons)		65%	63%
Art History and Visual Culture BA (Hons)		65%	63%
Communications BA (Hons)		65%	63%
Criminology BSc (Hons)		65%	67%
Drama BA (Hons) <b>P</b> <b>I</b> <sup>†</sup>		65%	63%
English BA (Hons) <b>I</b> <b>S</b> <sup>†</sup>	65% in Media, Film and Literature.	65%	67%
Film and Television Studies BA (Hons) <b>I</b> <b>S</b> <sup>†</sup>		65%	63%
Geography BA/BSc (Hons) <b>I</b> <b>S</b> <sup>†</sup>		65%	67%
Global Politics BA (Hons) <b>P</b> <b>S</b>		65%	63%
History BA (Hons) <b>I</b> <b>S</b> <sup>†</sup>		65%	67%
International Relations BA (Hons) <b>S</b>		65%	67%
Law LLB (Hons)		65%	67%
Law With Business LLB (Hons) <b>I</b> <b>S</b> <sup>†</sup>		65%	63%
Liberal Arts BA (Hons) <b>I</b> <b>S</b> <sup>†</sup>	Progression requirements dependent on declared major.	65%	67%
Philosophy BA (Hons)		65%	67%
Politics BA (Hons) <b>S</b>		65%	67%
Politics and Management BA (Hons) <b>P</b> <b>S</b>		65%	63%
Politics, Philosophy and Economics BA (Hons) <b>S</b>		65%	67%
Sociology BA (Hons) <b>S</b>		65%	63%
Zoology BSc (Hons) * <b>P</b> <b>I</b> <b>S</b> <sup>†</sup>	60% in either Biology and Chemistry; Mathematics and Statistics; Physics, Engineering and Applied Mathematics; or Psychology and Physiology.	65%	63%

Scan the QR codes or visit [www.intostudy.com/exeter/courses](http://www.intostudy.com/exeter/courses) to find out more about each programme, including a full list of progression options.

\* Undergraduate Master's option also available.  
<sup>†</sup> Industrial experience option may have additional requirements.  
**I** Degree option with industrial experience also available  
**S** Degree option with study abroad also available  
**P** Degree programme is taught at the Penryn Campus only





16 years and above.



3-term: Sep or Jan



3-term: IELTS 5.5 (with a minimum of 5.0 in all subskills) or equivalent.



3-term: Sep



3-term: IELTS 5.5 (with a minimum of 5.0 in all subskills) or equivalent.



3-term: Sep



3-term: IELTS 5.5 (with a minimum of 5.0 in all subskills) or equivalent.



Age requirement



Start dates



English requirements

Improve your subject knowledge and English language skills to the level you need to begin Year 2 of an undergraduate degree at the University of Exeter.

Accounting and Finance – ACCT

Choose from 3 degrees.



Opportunity to progress to an undergraduate degree in accounting with finance or business at the University of Exeter's triple accredited Business School.

What will I study?

You'll study all of these core modules:

English Language Skills for Undergraduate Studies (30 credits)	Management Concepts and Practice (15 credits)
Introduction to Financial Accounting (15 credits)	Principles of Economics (Macroeconomics) (15 credits)
Introduction to Management Accounting (15 credits)	Principles of Economics (Microeconomics) (15 credits)
Introduction to Statistics (15 credits)	

You'll need to earn 120 credits from all module options.

Biosciences – BIO

Choose from 6 degrees.



85% of modules are taught at the College of Life and Environmental Sciences alongside first year university students. Once you progress to your degree, you'll enjoy fieldwork opportunities. Previous destinations have included coral reefs in the Bahamas and rainforests in Borneo.

What will I study?

You'll study all of these core modules:

Academic English for Biosciences (30 credits)  
Fundamental Principles for Bioscientists (15 credits)  
Genetics (15 credits)  
Microbiology (15 credits)

Plus three of the following modules (depending on progression degree):

Animals (15 credits)  
Biochemistry (15 credits)  
Cells (15 credits)  
Ecology (15 credits)  
Plants (15 credits)  
Structure and Reactivity of Organic Compounds (15 credits)

You'll need to earn 120 credits from all module options.

Engineering – IYOE

Choose from 11 degrees.



Project and practical work are taught by the College of Engineering, Mathematics and Physical Sciences alongside first year university students, where you'll be able to make use of specialist engineering facilities and equipment.

What will I study?

You'll study all of these core modules:

Core Engineering (15 credits)  
English Language and Study Skills for Engineering (30 credits)  
Engineering Mathematics and Scientific Computing (30 credits)  
Multi-Disciplinary Challenge Project (30 credits)

Plus one of the following modules (depending on progression degree):

Fundamentals of Mechanics and Electronics (15 credits)  
Fundamentals of Mechanics and Materials (15 credits)

You'll need to earn 120 credits from all module options.



16 years and above.



3-term: Sep or Jan



3-term: IELTS 5.5 (with a minimum of 5.0 in all subskills) or equivalent.



3-term: Sep



3-term: IELTS 5.5 (with a minimum of 5.0 in all subskills) or equivalent.



Age requirement



Start dates



English requirements

Improve your subject knowledge and English language skills to the level you need to begin Year 2 of an undergraduate degree at the University of Exeter.

Management and Business Economics – BUS

Choose from 3 degrees.



Opportunity to progress to an undergraduate degree in a business, management or economics subject area at the University of Exeter's triple accredited Business School.

What will I study?

You'll study all of these core modules:

Accounting for Management and Economics (15 credits)	Discovering Management (15 credits)
English Language Skills for Undergraduate Studies (30 credits)	Principles of Economics (Macroeconomics) (15 credits)
Fundamentals of Marketing (15 credits)	Principles of Economics (Microeconomics) (15 credits)
Introduction to Statistics (15 credits)	

You'll need to earn 120 credits from all module options.

Mathematics with Business (Accounting, Economics, Finance or Management) – YMATH

Choose from 4 degrees.



Choose from four sub-pathway options with tailored specialist modules, depending on your intended progression degree at the University of Exeter.

What will I study?

You'll study all of these core modules:

English Language Skills for Undergraduate Studies (30 credits)  
Mathematical Methods (30 credits)  
Mathematical Structures (30 credits)

Plus the following modules in the Mathematics with Accounting sub-pathway:

Introduction to Financial Accounting (15 credits)  
Introduction to Management Accounting (15 credits)

Or the following modules in the Mathematics with Economics sub-pathway:

Economics 1 (15 credits)  
Economics 2 (15 credits)

Or the following modules in the Mathematics with Finance sub-pathway:

Economics 1 (15 credits)  
Economics 2 (15 credits)

Or the following modules in the Mathematics with Management sub-pathway:

Management Concepts and Practice (15 credits)  
Fundamentals of Marketing (15 credits)

You'll need to earn 120 credits from all module options.

Scan the QR codes or visit [www.intostudy.com/exeter/courses](http://www.intostudy.com/exeter/courses) to find out more about each programme, including a full list of progression options.



International Year One

16 years and above.

3-term: Sep

3-term: IELTS 5.5  
(with a minimum of 5.0 in all subskills) or equivalent.

Age requirement

Start dates

English requirements

Improve your subject knowledge and English language skills to the level you need to begin Year 2 of an undergraduate degree at the University of Exeter.

Psychology – PSY

Progress to  
BSc (Hons) Psychology.



Some pathway modules are taught at the College of Life and Environmental Sciences alongside first year University of Exeter students.

What will I study?

You'll study all of these core modules:

- Cognition, Emotion and Development (15 credits)
- Introduction to Biological Psychology (15 credits)
- Introduction to Clinical Psychology (15 credits)
- Introduction to Research Methods (15 credits)
- Introduction to Social Psychology (15 credits)
- Introduction to Statistics (15 credits)
- Psychological Concepts, Language and Study Skills (30 credits)

You'll need to earn 120 credits from all module options.

Once you've successfully completed your International Year One programme, we'll help you choose your University of Exeter degree. Depending on your subject area, you could study:

Degree	Pathway(s)	Specific requirements	English level	Academic grade
Accounting and Business BSc (Hons)	ACCT	55% average across Introduction to Financial Accounting and Introduction to Management Accounting.	65%	55%
Accounting and Finance BSc (Hons)	ACCT	Average of 55% across Introduction to Financial Accounting and Introduction to Management Accounting.	65%	55%
Animal Behaviour BSc (Hons)	BIO	Compulsory modules: Plants; Animals; Ecology. 40% in Fundamental Principles for Bioscientists.	65%	50%
Biochemistry BSc (Hons)	BIO	Compulsory modules: Biochemistry; Cells; Structure and Reactivity of Organic Compounds. 40% in Fundamental Principles for Bioscientists and Structure and Reactivity of Organic Compounds.	65%	50%
Biological Sciences BSc (Hons)	BIO	Compulsory modules: Biochemistry; Cells; Plants. 40% in Fundamental Principles for Bioscientists.	65%	50%
Business and Management BSc (Hons)	BUS	55% average across Management Concepts and Practice and Fundamentals of Marketing.	65%	55%
Business Economics BSc (Hons)	ACCT or BUS	Average of 55% across Principles of Economics (Microeconomics) and Principles of Economics (Macroeconomics).	65%	55%
Civil Engineering BEng (Hons)/MEng	IYOE	Academic average to include Fundamentals of Mechanics and Materials.	65%	50%
Conservation Biology and Ecology BSc (Hons)	BIO	Compulsory modules: Plants; Animals; Ecology. 40% in Fundamental Principles for Bioscientists.	65%	50%
Electronic Engineering BEng (Hons)/MEng	IYOE	Academic average to include Fundamentals of Mechanics and Electronics.	65%	50%
Engineering and Entrepreneurship BEng (Hons)	IYOE	Academic average to include Fundamentals of Mechanics and Materials.	65%	50%
Engineering and Management BEng (Hons)/MEng	IYOE	Academic average to include Fundamentals of Mechanics and Materials.	65%	50%
Engineering BEng (Hons)/MEng	IYOE	Academic average to include Fundamentals of Mechanics and Materials.	65%	50%
Evolutionary Biology BSc (Hons)	BIO	Compulsory modules: Plants; Animals; Ecology. 40% in Fundamental Principles for Bioscientists.	65%	50%
Marketing and Management BSc (Hons)	BUS	Average of 55% across Management Concepts and Practice and Fundamentals of Marketing.	65%	55%
Mathematics with Accounting BSc (Hons)	YMATH	Compulsory modules: Introduction to Financial Accounting and Introduction to Management Accounting.	65%	50%
Mathematics with Economics BSc (Hons)	YMATH	Compulsory modules: Microeconomics 1.	65%	50%
Mathematics with Finance BSc (Hons)	YMATH	Compulsory modules: Microeconomics 1.	65%	50%
Mathematics with Management BSc (Hons)	YMATH	Compulsory modules: Management Concepts and Practice and Fundamentals of Marketing.	65%	50%
Mechanical Engineering BEng (Hons)/MEng	IYOE	Academic average to include Fundamentals of Mechanics and Materials.	65%	50%
Psychology BSc (Hons)	PSY	40% Introduction to Statistics, to include 40% in the January exam component of the module.	65%	50%
Zoology BSc (Hons)	BIO	Compulsory modules: Plants; Animals; Ecology. 40% in Fundamental Principles for Bioscientists.	65%	50%

Scan the QR codes or visit [www.intostudy.com/exeter/courses](http://www.intostudy.com/exeter/courses) to find out more about each programme, including a full list of progression options.

\* Industrial experience option may have additional requirements  
 Degree option with industrial experience also available  
 Degree option with study abroad also available  
 Degree programme is taught at the Penryn Campus only

Graduate Diploma

16 years and above.

3-term: Sep or Jan  
4-term: Sep or Jun

3-term: IELTS 5.5  
(with a minimum of 5.5 in all subskills) or equivalent.  
4-term (with Pre-sessional English for Graduate Diploma): IELTS 5.0  
(with at least one subskill at 5.5 and no subskill below 5.0) or equivalent.

Age requirement

Start dates

English requirements

Improve your subject knowledge and English language skills to the level you need to begin a postgraduate degree at the University of Exeter.

Exeter International  
Graduate Diploma – GRAD

Choose from  
36 degrees.



From business and education to data science and engineering, progress to a range of postgraduate degrees at the University of Exeter. A choice of specialist modules during this programme will enable you to tailor your pathway to your degree goals, while modules for academic English language, postgraduate research and study skills will get you degree ready.

Year 1 of study plan - What will I study?

You will need to earn 120 credits from the following modules:

- Graduate Academic English (30 credits)
- Applied Research Skills (15 credits)
- Business in Society (15 credits)
- Global Issues (15 credits)

Plus three of the following modules (depending on progression degree):

- Education Studies (15 credits)
- Entrepreneurship (15 credits)
- Financial Accounting and Reports (15 credits)
- Financial Management (15 credits)
- Fundamentals of Investments (15 credits)
- Introduction to Data Science and Programming (15 credits)
- Introduction to Quantitative Methods (15 credits)
- Management Concepts (15 credits)
- Research Project (15 credits)

You'll need to earn 120 credits from all module options.

During your Graduate Diploma programme, we'll help you choose your University of Exeter degree. Just some of the degrees you could study include:

Degree	Specific requirements	English level	Academic grade
Accounting and Finance MSc	60% average between Financial Accounting and Reports and Financial Management.	65%	60%
Advanced Computer Science with Business MSc	55% in Introduction to Programming. Candidates are required to have a degree in a strongly numerate subject (e.g. computer science, mathematics or physics).	65%	60%
Applied Data Science and Statistics MSc	55% in Quantitative Methods. Evidence of study of mathematics at pre-undergraduate level.	65%	55%
Business Analytics MSc		70%	60%
Creativity: Innovation and Business Strategy MA	Applicants should have a degree that includes elements of creative subjects such as film, drama, business studies, media or communication.	65%	60%
Curation: Art and Business MA	Applicants should have a degree that includes elements of humanities or business.	65%	60%
Data Science with Artificial Intelligence MSc	55% in Quantitative Methods. Candidates are required to have a degree in a strongly numerate subject (e.g. computer science, mathematics or physics).	65%	60%
Digital Marketing MSc		65%	55%
Education Leadership and Management MA	60% in Education Studies module. Demonstrable experience of leadership and/or management in education. Applicants should have a degree in education/social sciences/humanities and are expected to have at least three years' relevant post-graduate work experience. Include a CV with application.	65%	60%
Engineering Business Management MSc		65%	50%
Entrepreneurship and Innovation Management MSc	A personal statement explaining the reasons for choosing this postgraduate degree.	70%	55%
Finance and Investment MSc **	Compulsory modules: two modules from Financial Accounting and Reports, Financial Management and Fundamentals of Investments. 55% average between any two of the three Finance modules.	65%	55%
Finance and Management MSc **	Compulsory modules: one module from Financial Accounting and Reports, Financial Management and Fundamentals of Investments. 55% in (any) one out of the three Finance modules.	65%	50%
Financial Analysis and Fund Management MSc	Compulsory modules: two modules from Financial Accounting and Reports, Financial Management and Fundamentals of Investments. 67% average between any two of the three Finance modules.	70%	67%
Financial Technology (Fintech) MSc	Compulsory modules: one module from Financial Accounting and Reports, Financial Management and Fundamentals of Investments. 55% in (any) one out of the three Finance modules.	65%	55%
Human Resource Management MSc **		70%	50%
International Business MSc		65%	50%
International Education MA	60% in Education Studies module. Applicants should have a degree in education/social sciences/humanities.	65%	60%
International Human Resource Management MSc		65%	50%
International Supply Chain Management MSc		65%	50%
Management MSc **		70%	60%
Marketing MSc **		70%	55%
Masters Public Administration MPA	Demonstrable relevant work experience. Applicants are expected to have at least three years' relevant post graduation work experience and must include a CV with their application so that their work experience can be assessed prior to receiving an offer for the Graduate Diploma.	65%	55%
Money, Banking and Finance MSc		65%	50%
Sustainable Development MSc		65%	60%

Scan the QR codes or visit [www.intostudy.com/exeter/courses](http://www.intostudy.com/exeter/courses) to find out more about each programme, including a full list of progression options.

\*\* This programme can be taken as a 9 or 12 month option



# Dates and prices

The cost of your programme may vary depending on factors including the pathway chosen and programme length. The following guide to costs is based on pricing for the current academic year and provides an indication of the cost of attendance for some of our pathways. For specific cost information, please refer online: [www.intostudy.com/exeter/courses](http://www.intostudy.com/exeter/courses)

Estimated cost of attendance based on prices for current academic year 2022-23						
Study length	Tuition	Accommodation	Books and fees	Airport pick up**	Insurance	Total
<b>Academic programmes</b>						
International Foundation (2 term)	£18,995	£4,180-£4,840	£370	£40-£345	£205	£23,750-£24,410
International Foundation (3 term)	£21,685	£6,270-£8,580	£370-£770	£40-£345	£375	£28,700-£31,410
International Foundation (4 term)	£23,645	£9,120-£10,560	£455-£855	£40-£345	£488	£33,708-£35,548
International Year One (3 term)	£21,685	£6,270-£8,580	£370-£770	£40-£345	£375	£28,700-£31,410
Graduate Diploma (3 term)	£22,150	£6,270-£8,580	£370	£40-£345	£375	£29,165-£31,475
<b>English language courses</b>						
1 term*	£4,995	£2,090-£2,420	£85	£40-£345	£127	£7,297-£7,627
16 weeks	£7,830	£3,395-£3,935	£120	£40-£345	£151	£11,496-£12,036

Start months and term dates					
Academic programmes		Academic English		Pre-session English	
June (4 term)	Mon 26 Jun 2023-Fri 21 Jun 2024	August (16 weeks)	Mon 14 Aug 2023-Fri 15 Dec 2023	April (18 weeks)	Mon 08 Apr 2024-Fri 16 Aug 2024
September (3 term)	Mon 18 Sep 2023-Fri 21 Jun 2024	October (1 term)	Mon 02 Oct 2023-Fri 15 Dec 2023	June (10 weeks)	Mon 10 Jun 2024-Fri 16 Aug 2024
October (4 term)	Mon 02 Oct 2023-Fri 30 Aug 2024	January (1 term)	Mon 08 Jan 2024-Fri 22 Mar 2024	July (6 weeks)	Mon 08 Jul 2024-Fri 16 Aug 2024
January (3 term)	Mon 08 Jan 2024-Fri 30 Aug 2024	April (1 term)	Tue 02 Apr 2024-Fri 14 Jun 2024		
March (2 term)	Mon 25 Mar 2024-Fri 30 Aug 2024	June (1 term)	Mon 24 Jun 2024-Fri 06 Sep 2024		

Please note the prices shown are for the current academic year of 01 September 2022 – 31 August 2023 and are for indicative purposes only. For full details of term dates, please visit the relevant course page at [www.intostudy.com/exeter/courses](http://www.intostudy.com/exeter/courses)

\* The price will depend on your start date and length of study. Prices shown are only for one term. Vacation weeks in between terms are extra and will be charged at the weekly accommodation price.  
 \*\* Please note airport pickup is optional and is not included in the total.

Apply online:  
[apply.intostudy.com](http://apply.intostudy.com)

Apply via your local INTO Educational counsellor.  
 If you would like us to put you in contact with one of our counsellors please contact us.

Check to see if you're eligible for a scholarship:  
[www.intostudy.com/exeter/scholarships](http://www.intostudy.com/exeter/scholarships)

## Discover more online

**For students:**  
[www.intostudy.com/exeter](http://www.intostudy.com/exeter)  
**For education counsellors:**  
[partnerportal.intoglobal.com/exeter](http://partnerportal.intoglobal.com/exeter)



Through innovative partnerships with leading universities, we expand opportunities for higher education, ensuring success and transforming the lives of our students and staff.

## INTO GIVING

Working across the globe, INTO Giving supports projects that increase access to education and improve the quality of teaching and learning. For more information visit [www.into-giving.com](http://www.into-giving.com)

## Contact us

[www.intostudy.com/en/contact](http://www.intostudy.com/en/contact)  
**Visit the Centre:**  
[into@exeter.ac.uk](mailto:into@exeter.ac.uk) or +44 1392 724282

[facebook.com/intouniversityofexeter](https://facebook.com/intouniversityofexeter)  
[myin.to/intoexevideos](https://myin.to/intoexevideos)  
[instagram.com/intoexeter](https://instagram.com/intoexeter)

**Centre address details:**  
 INTO University of Exeter  
 University of Exeter  
 INTO Building  
 Stocker Road  
 Exeter  
 EX4 4PY  
 United Kingdom

© INTO University of Exeter LLP, September 2022. Every effort is made to ensure that the information provided in this document is correct at the time of publication. However, from time to time there may be occasions where some of the information has changed since the date of publication. The most up-to-date information can be found on our website at [www.intostudy.com/exeter](http://www.intostudy.com/exeter) – please refer to this before submitting your application. If, in our opinion, we consider that any change has been made which has a material impact on any offer that has been made to you to study with us, we will inform you of these changes in writing. The information provided in this document is subject to INTO University of Exeter's terms and conditions, which can be accessed at [www.intostudy.com/exeter/terms](http://www.intostudy.com/exeter/terms)  
 INTO University of Exeter LLP, registered number: OC323693.  
 Registered office: One Gloucester Place, Brighton, BN1 4AA  
 Education provider sponsor number 3FMMCWWY2

Education counsellor's stamp