

# Price List

## 2023



UK ♦ Canada ♦ France ♦ South Africa ♦ Cyprus



# Contents

Welcome to the world of Bayswater Education.  
Our premium brands offer quality international education experiences in 5 amazing countries, the UK, Canada, South Africa, Cyprus and France.

## UK

London  
Liverpool  
Brighton  
Bournemouth

## Canada

Vancouver  
Toronto  
Calgary

## South Africa

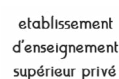
Cape Town

## Cyprus

English in Cyprus (Limassol)

## France

Paris



# Our Promise

We're passionate about growing communities of global thinkers and explorers, at home and abroad – whatever their story. We set up Bayswater because we want people from every walk of life to get a buzz from discovering new cultures, exploring new flavours, and learning what's out there. We think of them as global spirits, like ourselves.



## A home away from home

We're here to support you, at every step of your journey.

## More power to you

We're a student powered community, listening to you and celebrating your efforts and achievements.

## Your success is ours

It's our job to meet your needs and give you what you need to succeed. Your goals are ours too.

## Inspiring global spirits

Why we do what we do – to empower all young people to create the life they want to live.



# London

## Course Fees

### General English and IELTS Preparation Prices and lessons are per week

Course	Lessons	1 to 11	12 to 23	24+
Standard	20	£320	£285	£250
Intensive	25	£360	£320	£285
Super Intensive	30	£400	£355	£320

IELTS Preparation Available in Standard 20 lessons. Can be combined with General English as part of an Intensive or Super Intensive Course  
Minimum level for IELTS Preparation: B1

English Plus Add-ons	Lessons	Price	Notes
One to One lessons	5	£375	Custom packages available

### Cambridge Exam Preparation Prices are per course

Course	Lessons	10 week	12 week	Dates
Intensive	25	£3,600	£4,320	See website
Super Intensive	30	£4,000	£4,800	

B2 First (FCE) - min Intermediate Level  
C1 Advanced (CAE) - min Upper-Intermediate Level

### Professional Upper Intermediate (B2) level required

Digital marketing	Duration	Price	Start Dates
Professional Diploma	4 weeks	£2,299	6 Feb, 3 Apr, 1 May, 5 Jun, 3 Jul, 7 Aug, 4 Sep, 2 Oct, 6 Nov

Fashion	Duration	Price	Start Dates
Luxury Brand Management Certificate	4 weeks	£1,575	6 Mar, 3 Jul, 7 Aug, 2 Oct
Fashion Communication Certificate	4 weeks	£1,575	6 Feb, 5 Jun, 4 Sep, 6 Nov
Fashion Diploma	8 weeks	£3,150	5 Feb, 5 Jun, 7 Aug, 4 Sep, 2 Oct

### Premium Package\*

Professional and English	8 weeks	12 weeks	24 weeks	36 weeks
Any UK City Any Professional Certificate + English Course**	£2,895	£3,995	£6,995	£9,995
Extra week	£360	£330	£295	£275

\*Includes registration fee and material fees

\*\*Courses to be studied one course at a time, not simultaneously



▲ Address: 167 Queensway,  
London W2 4SB

### Quick Facts

#### All Courses Include

Online placement test  
Welcome activity  
Organised Social Programme  
Student Handbook  
End of Course Certificate  
WiFi

#### Professional courses

Minimum age: 18  
Class size: Max 16, Average 10

#### English Courses

Minimum age: 16  
Minimum stay: 1 week  
Courses start: Every Monday  
Class size: Max 15, Average 10

#### English Lessons

1 lesson: 45 min  
20 lessons: 15 hrs/week  
25 lessons: 18.75 hrs/week  
30 lessons: 22.5 hrs/week

Course schedule may take place in the morning or afternoon

#### Centre Closure Dates

The College is open between 2 January - 15 December 2023, including all UK public holidays. School is closed on 28th August for Notting Hill Carnival.





# London

## Accommodation, Transfers and Other Fees

### Accommodation Prices are per week

Homestay Age 16+	Zone	Time	Bed & Breakfast	Half Board
Single Shared Bathroom	4-5	45 - 60 min ➡	£205	£235
Twin* Shared Bathroom	4-5	45 - 60 min ➡	£195	£225
Single Shared Bathroom	3	30 - 55 min ➡	£220	£255
Twin* Shared Bathroom	3	30 - 55 min ➡	£210	£240
Single Shared Bathroom	2	20 - 55 min ➡	£245	£270
Twin* Shared Bathroom	2	20 - 55 min ➡	£230	£265
<div> <div> <b>Summer Supplement</b>                      11 Jun - 26 Aug £25 p/w                 </div> <div> <b>Christmas Supplement</b>                      24 Dec- 30 Dec £50                 </div> <div> <b>Private Bathroom</b> (Only Zone 4/5)                      En-suite or Exclusive use £45 p/w                 </div> <div> <b>Dietary supplements</b>                      £25-45 p/w                 </div> </div>				

\*Twin rooms are only available for two people travelling together  
 Students in a single room may be housed in the same homestay as other students  
 Students under 18 in a homestay must book at least Half Board, a return transfer and provide a guardian consent form  
 Extra nights: billed on a pro rata basis

Residences Age 18+	Zone	Time	Per week	Dates
Chapter Portobello Studio Room En-suite	2	20 min ➡	£365	Year round
Premium Single Room En-suite	2	30-45 min ➡	£425	Year round
Scape Canada Water Single Room En-suite	2	30-45 min ➡	£325	2 Jul - 9 Sep
The Hive Bethnal Green Single Room En-suite	2	30 min ➡	£365	2 Jul - 20 Aug

### Other charges

Prices per booking	
Registration Fee	£80
Accommodation Booking Fee	£40
Bank Charges	£12
Exam Fee - IELTS*	£200
Exam fee - FCE*	£170
Exam fee - CAE*	£175
Professional Courses Materials Fee	£24
Prices per week	
Materials Fee**	£6
Insurance*	£8

\* Optional Charges  
 \*\*Applies to all language and professional courses

All prices are subject to change

### Transfers

Airport	One Way
Heathrow	£120
London City	£120
Luton	£155
Gatwick	£155
Stansted	£155
St Pancras	£85

£20 supplement for shared transfer per person/ journey



▲ Chapter Portobello,  
1 Alderson St, London W10 5JY

### Quick Facts

#### Room Types

Single 🛏

Twin 🛏🛏

Studio 🛏🛏

#### Board Types

**Bed & breakfast:** Room and breakfast provided

**Half Board:** Room, breakfast and one evening meals provided

**Self-catering:** Room provided without meals

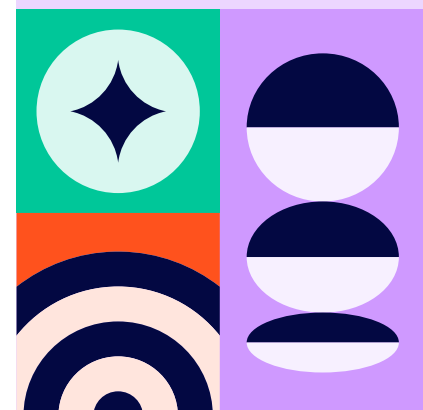
Residences are self-catering

#### Bathroom Types

**En-suite:** Bedroom with adjoining private bathroom

**Shared Bathroom:** Bathroom shared with other residents and/ or host family

**Arrival and departure day:**  
Sunday to Saturday



# Liverpool

## Course Fees

### General English and IELTS Preparation

Prices and lessons are per week

Course	Lessons	1 to 11	12 to 23	24+
Standard	20	£245	£230	£215
Intensive	25	£270	£245	£230
Super Intensive	30	£305	£290	£270

IELTS Preparation: Available in Intensive or Super Intensive. A combination of 20 or 25 General English lessons + 5 dedicated IELTS lessons  
Minimum level for IELTS Preparation: B1

English Plus Add-ons	Lessons	Price	Notes
One to One lessons	5	£325	Custom packages available

### Add a Professional Certificate in London

Upper Intermediate (B2) level required

Digital marketing	Duration	Price	Start Dates
Professional Diploma	4 weeks	£2,299	6 Feb, 3 Apr, 1 May, 5 Jun, 3 Jul, 7 Aug, 4 Sep, 2 Oct, 6 Nov

Fashion	Duration	Price	Start Dates
Luxury Brand Management Certificate	4 weeks	£1,575	6 Mar, 3 Jul, 7 Aug, 2 Oct
Fashion Communication Certificate	4 weeks	£1,575	6 Feb, 5 Jun, 4 Sep, 6 Nov
Fashion Diploma	8 weeks	£3,150	5 Feb, 5 Jun, 7 Aug, 4 Sep, 2 Oct

### Premium Package\*

Professional and English	8 weeks	12 weeks	24 weeks	36 weeks
Any UK City Any Professional Certificate + English Course**	£2,895	£3,995	£6,995	£9,995
Extra week	£360	£330	£295	£275

\*Includes registration fee and material fees

\*\*Courses to be studied one course at a time, not simultaneously



▲ 42 Whitechapel,  
Liverpool L1 6DZ

### Quick Facts

#### All Courses Include

Online placement test  
Welcome activity  
Organised Social Programme  
Student Handbook  
End of Course Certificate  
WiFi

#### Professional courses

Minimum age: 18  
Class size: Max 16, Average 10

#### English Courses

Minimum age: 16  
Minimum stay: 1 week  
Courses start: Every Monday  
Class size: Max 15, Average 10

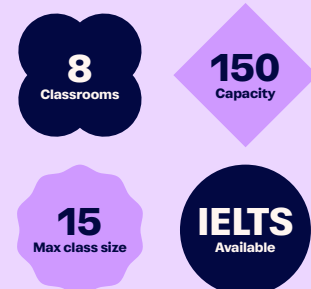
#### English Lessons

1 lesson: 45 min  
20 lessons: 15 hrs/week  
25 lessons: 18.75 hrs/week  
30 lessons: 22.5 hrs/week

Course schedule may take place  
in the morning or afternoon

#### Centre Closure Dates

The College is open between  
2 January - 15 December 2023,  
including all UK public holidays



# Liverpool

## Accommodation, Transfers and Other Fees

### Accommodation Prices are per week

Homestay Age 16+	Time	Bed & Breakfast	Half Board
Single Shared Bathroom	30-40 min	£175	£180
Twin Shared Bathroom*	30-40 min	£150	£170
<b>Summer Supplement</b> 11 Jun - 26 Aug £25 p/w	<b>Christmas Supplement</b> 24 Dec- 30 Dec £45	<b>Private Bathroom</b> En-suite or Exclusive use £40 p/w	<b>Dietary supplements</b> £25-45 p/w

\*Twin rooms are only available for two people travelling together

Students in a single room may be housed in the same homestay as other students

Students under 18 in a homestay must book at least Half Board, a return transfer and provide a guardian consent form

Extra nights: billed on a pro rata basis

Residences Age 18+	Time	Per week	Dates
Atlantic Point Single Room En-suite	15 min	£145	Year round
Ablett House Single Room En-suite	10 min	£165	Year round
Benson Yard Single Room En-suite	11 min	£185	Year round

### Other charges

Prices per booking	
Registration Fee	£80
Accommodation Booking Fee	£40
Bank Charges	£12
Exam Fee - IELTS*	£200
Professional Courses Materials Fee	£24
Prices per week	
Materials Fee**	£6
Insurance*	£8

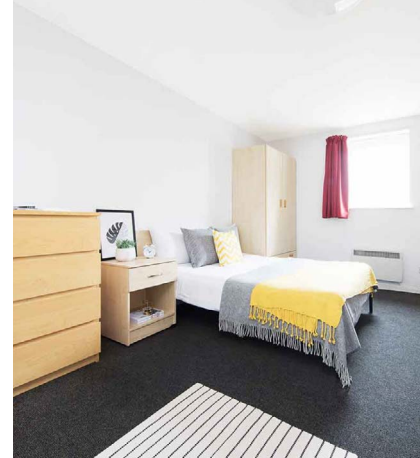
\* Optional Charges

\*\*Applies to all language and professional courses

### Transfers

Airport	One Way	Return
Liverpool Airport	£60	£105
Manchester Airport	£105	£190
London Airports	On request	

£20 supplement for shared transfer per person/ journey



▲ Atlantic Point, Naylor St,  
Liverpool L3 6LS

### Quick Facts

#### Room Types

Single

Twin

#### Board Types

**Bed & breakfast:** Room and breakfast provided

**Half Board:** Room, breakfast and one evening meals provided

**Self-catering:** Room provided without meals

Residences are self-catering

#### Bathroom Types

**En-suite:** Bedroom with adjoining private bathroom

**Shared Bathroom:** Bathroom shared with other residents and/ or host family

**Arrival and departure day:**  
Sunday to Saturday

All prices are subject to change



bayswater.ac/liverpool

E-mail us  
partners@bayswater.ac

Call us  
+44 (0) 151 707 8905

Visit us  
42 Whitechapel, Liverpool L1 6DZ

#### Agent Enquiries

Our Agents are appointed experts in your country and can give you specialist advice on our courses, as well as any visa requirements. Contact us for an Agent in your area.

For agent sales enquiries please contact us at  
partners@bayswater.ac



# Brighton

## Course Fees

### General English and IELTS Preparation Prices and lessons are per week

Course	Lessons	1 to 11	12 to 23	24+
Standard	20	£295	£260	£225
Intensive	25	£335	£290	£265
Super Intensive	30	£380	£340	£290

IELTS Preparation: Available in Intensive or Super Intensive. A combination of 20 or 25 General English lessons + 5 dedicated IELTS lessons  
Minimum level for IELTS Preparation: B1

English Plus Add-ons	Lessons	Price	Notes
One to One lessons	5	£375	Custom packages available
Family Options	Lessons	1+	Extra adult/child Course Dates
Young Learner (age 10+)	20	£295	26 June - 11 Aug
Parent & Child (age 10+)	20	£550	
Day Camp (age 12-17)	20	£425	

### Cambridge Exam Preparation Prices are per course

Course	Lessons	10 weeks	12 weeks	Dates
Intensive	25	£3,350	£4,020	See website
Super Intensive	30	£3,800	£4,560	See website

B2 First (FCE) - min Intermediate Level  
C1 Advanced (CAE) - min Upper- Intermediate Level

### Add a Professional Certificate in London Upper Intermediate (B2) level required

Digital marketing	Duration	Price	Start Dates
Professional Diploma	4 weeks	£2,299	6 Feb, 3 Apr, 1 May, 5 Jun, 3 Jul, 7 Aug, 4 Sep, 2 Oct, 6 Nov
Fashion	Duration	Price	Start Dates
Luxury Brand Management Certificate	4 weeks	£1,575	6 Mar, 3 Jul, 7 Aug, 2 Oct
Fashion Communication Certificate	4 weeks	£1,575	6 Feb, 5 Jun, 4 Sep, 6 Nov
Fashion Diploma	8 weeks	£3,150	5 Feb, 5 Jun, 7 Aug, 4 Sep, 2 Oct

### Premium Package\*

Professional and English	8 weeks	12 weeks	24 weeks	36 weeks
Any UK City Any Professional Certificate + English Course**	£2,895	£3,995	£6,995	£9,995
Extra week	£360	£330	£295	£275

\*Includes registration fee and material fees

\*\*Courses to be studied one course at a time, not simultaneously



▲ 61 Western Rd, Brighton  
Hove BN3 1JD

### Quick Facts

#### All Courses Include

Online placement test  
Welcome activity  
Organised Social Programme  
Student Handbook  
End of Course Certificate  
WiFi

#### Professional courses

Minimum age: 18  
Class size: Max 16, Average 10

#### English Courses

Minimum age: 16  
Minimum stay: 1 week  
Courses start: Every Monday  
Class size: Max 15, Average 10

#### English Lessons

1 lesson: 45 min  
20 lessons: 15 hrs/week  
25 lessons: 18.75 hrs/week  
30 lessons: 22.5 hrs/week

#### Family Options

Parent & Child, Young Learner (Mon-Fri)  
Tuition only  
Day Camp (Mon-Fri)  
Tuition, lunch and half day activities

Course schedule may take place in the morning or afternoon

#### Centre Closure Dates

The College is open between 2 January - 15 December 2023, including all UK public holidays



bayswater.ac/brighton

E-mail us  
partners@bayswater.ac

Call us  
+44 1273 646510

Visit us  
61 Western Rd, Brighton Hove BN3 1JD

#### Agent Enquiries

Our Agents are appointed experts in your country and can give you specialist advice on our courses, as well as any visa requirements. Contact us for an Agent in your area.

For agent sales enquiries please contact us at  
partners@bayswater.ac



# Brighton

## Accommodation, Transfers and Other Fees

### Accommodation Prices are per week

Homestay Age 16+		Half Board
Single Shared Bathroom		£195
Twin Shared Bathroom*		£175
<b>Summer Supplement</b> 11 Jun - 26 Aug £25 p/w	<b>Christmas Supplement</b> 24 Dec- 30 Dec £50	<b>Dietary supplements</b> £25-45 p/w

\*Twin rooms are only available for two people travelling together

Students in a single room may be housed in the same homestay as other students

Students under 18 in a homestay must book at least Half Board, a return transfer and provide a guardian consent form

Extra nights: billed on a pro rata basis

Residences Age 18+	Time	1-25 weeks	26+ weeks	Dates
Britannia Study Hotel Single En-suite	5-10 min	£335	£325	Year round
North Laine Single En-suite	30 min  - 20 min	£279		1 Jul to 19 Aug

### Family residence

Upon request

### Other charges

Prices per booking	
Registration Fee	£80
Accommodation Booking Fee	£40
Bank Charges	£12
Exam Fee - IELTS*	£200
Exam fee - FCE*	£170
Exam fee - CAE*	£175
Professional Courses Materials Fee	£24
Prices per week	
Materials Fee**	£6
Insurance*	£8

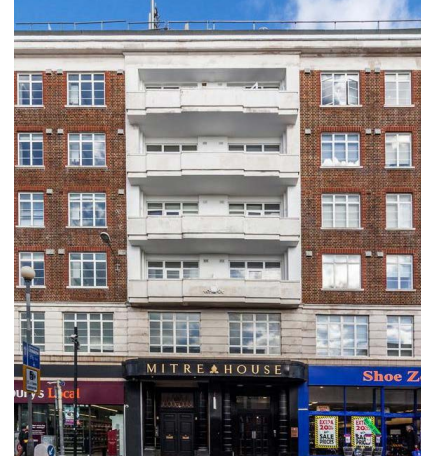
\* Optional Charges

\*\*Applies to all language and professional courses

### Transfers

Airport/Station	One Way
Heathrow	£190
London City	£190
Luton	£220
Gatwick	£120
Stansted	£220
St Pancras	£215

£20 supplement for shared transfer per person/ journey



▲ Britannia Study Hotel  
150 Western Road,  
Bournemouth BH1 2AD

### Quick Facts

#### Room Types

Single

Twin

#### Board Types

**Half Board:** Room, breakfast and one evening meals provided

**Self-catering:** Room provided without meals

Residences are self-catering

#### Bathroom Types

**En-suite:** Bedroom with adjoining private bathroom

**Shared Bathroom:** Bathroom shared with other residents and/ or host family

**Arrival and departure day:**  
Sunday to Saturday

All prices are subject to change



bayswater.ac/brighton

E-mail us  
partners@bayswater.ac

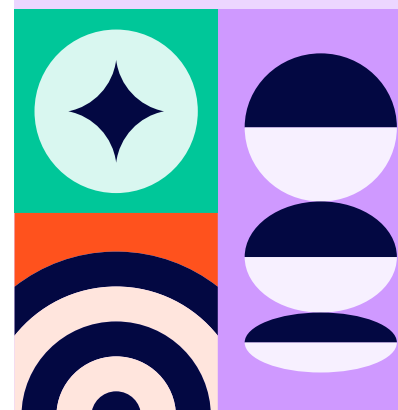
Call us  
+44 1273 646510

Visit us  
61 Western Rd, Brighton Hove BN3 1JD

#### Agent Enquiries

Our Agents are appointed experts in your country and can give you specialist advice on our courses, as well as any visa requirements. Contact us for an Agent in your area.

For agent sales enquiries please contact us at  
partners@bayswater.ac



# Bournemouth

## Course Fees

### General English and IELTS Preparation Prices and lessons are per week

Course	Lessons	1 to 11	12 to 23	24+
Standard	20	£245	£230	£215
Intensive	25	£270	£245	£230
Super Intensive	30	£305	£290	£270

IELTS Preparation Available in Standard 20 lessons. Can be combined with General English as part of an Intensive or Super Intensive Course  
Minimum level for IELTS Preparation: B1

English Plus Add-ons	Lessons	Price	Notes
One to One lessons	5	£325	Custom packages available

Family Options	Lessons	1+	Extra adult/child	Course Dates
Young Learner (age 10+)	20	£245		26 June - 11 Aug
Parent & Child (age 10+)	20	£480	£240	
Day Camp (age 12-17)	20	£425		

### Add a Professional Certificate in London Upper Intermediate (B2) level required

Digital marketing	Duration	Price	Start Dates
Professional Diploma	4 weeks	£2,299	6 Feb, 3 Apr, 1 May, 5 Jun, 3 Jul, 7 Aug, 4 Sep, 2 Oct, 6 Nov

Fashion	Duration	Price	Start Dates
Luxury Brand Management Certificate	4 weeks	£1,575	6 Mar, 3 Jul, 7 Aug, 2 Oct
Fashion Communication Certificate	4 weeks	£1,575	6 Feb, 5 Jun, 4 Sep, 6 Nov
Fashion Diploma	8 weeks	£3,150	5 Feb, 5 Jun, 7 Aug, 4 Sep, 2 Oct

### Premium Package\*

Professional and English	8 weeks	12 weeks	24 weeks	36 weeks
Any UK City				
Any Professional Certificate + English Course**	£2,895	£3,995	£6,995	£9,995
Extra week	£360	£330	£295	£275

\*Includes registration fee and material fees

\*\*Courses to be studied one course at a time, not simultaneously



▲ St Peters Quarter,  
Bournemouth, BH1 2AD

### Quick Facts

#### All Courses Include

Online placement test  
Welcome activity  
Organised Social Programme  
Student Handbook  
End of Course Certificate  
WiFi

#### Professional courses

Minimum age: 18  
Class size: Max 16, Average 10

#### English Courses

Minimum age: 16  
Minimum stay: 1 week  
Courses start: Every Monday  
Class size: Max 15, Average 10

#### English Lessons

1 lesson: 45 min  
20 lessons: 15 hrs/week  
25 lessons: 19 hrs/week  
30 lessons: 23 hrs/week

#### Family Options

Parent & Child, Young Learner  
(Mon-Fri)  
Tuition only

#### Day Camp (Mon-Fri)

Tuition, lunch and half day  
activities

Course schedule may take place  
in the morning or afternoon

#### Centre Closure Dates

The College is open between 2  
January - 15 December 2023,  
including all UK public holidays



bayswater.ac/bournemouth

E-mail us  
partners@bayswater.ac

Call us  
+44 (0) 1202 836 731

Visit us  
St Peters Quarter, Bournemouth BH1 2AD

#### Agent Enquiries

Our Agents are appointed experts in your country and can  
give you specialist advice on our courses, as well as any visa  
requirements. Contact us for an Agent in your area.

For agent sales enquiries please contact us at  
partners@bayswater.ac

# Bournemouth

## Accommodation, Transfers and Other Fees

### Accommodation Prices are per week

Homestay Age 16+	Bed & Breakfast	Half Board
Single Shared Bathroom	£155	£180
Twin Shared Bathroom*	£145	£170
<b>Summer Supplement</b> 11 Jun - 26 Aug £25 p/w	<b>Christmas Supplement</b> 24 Dec- 30 Dec £45	<b>Private bathroom</b> En-suite or exclusive use £40 p/w
<b>Dietary supplements</b> £25-45 p/w		

\*Twin rooms are only available for two people travelling together

Students in a single room may be housed in the same homestay as other students

Students under 18 in a homestay must book at least Half Board, a return transfer and provide a guardian consent form

Extra nights: billed on a pro rata basis

Residences Age 18+	Time	Per week	Dates
Piccadilly Hotel Single En-suite	8 min  - 5 min	£250	10 Sep to 20 May
Lyme Regis House Single En-suite	15 min  - 7 min	£270	9 Jul to 27 Aug

### Family residence

Upon request

### Other charges

Prices per booking	
Registration Fee	£80
Accommodation Booking Fee	£40
Bank Charges	£12
Exam Fee - IELTS*	£ 200
Professional Courses Materials Fee	£24
Prices per week	
Materials Fee**	£6
Insurance*	£8

\* Optional Charges

\*\*Applies to all language and professional courses

### Transfers

Airport	One Way
Bournemouth	£65
Gatwick	£255
Heathrow	£250
Luton	£275
Stansted	£305

£20 supplement for shared transfer per person/ journey



▲ St Peters Quarter,  
Bournemouth, BH1 2AD

### Quick Facts

#### Room Types

Single

Twin

#### Board Types

**Bed & breakfast:** Room and breakfast provided

**Half Board:** Room, breakfast and one evening meals provided

**Self-catering:** Room provided without meals

Residences are self-catering

#### Bathroom Types

**En-suite:** Bedroom with adjoining private bathroom

**Shared Bathroom:** Bathroom shared with other residents and/ or host family

**Arrival and departure day:**  
Sunday to Saturday

All prices are subject to change



bayswater.ac/bournemouth

E-mail us  
partners@bayswater.ac

Call us  
+44 (0) 1202 836 731

Visit us  
St Peters Quarter, Bournemouth BH1 2AD

#### Agent Enquiries

Our Agents are appointed experts in your country and can give you specialist advice on our courses, as well as any visa requirements. Contact us for an Agent in your area.

For agent sales enquiries please contact us at  
partners@bayswater.ac



# Vancouver

## Course Fees

### General English, Business and IELTS Preparation Prices and lessons are per week

Course	Lessons	1 to 11	12 to 23	24+
Standard	20	\$350	\$330	\$300
Intensive	25	\$400	\$385	\$350
Super Intensive	30	\$445	\$430	\$395

IELTS Preparation and Business English: Available in Intensive or Super Intensive.  
A combination of 20 or 25 General English lessons + 5 dedicated IELTS/ or Business English lessons.  
Minimum level for IELTS Preparation: B1 or students in level 5

English Plus Add-ons	Lessons	Price	Notes
One to One lessons	5	\$475	Custom packages available

University Preparation	Lessons	12 to 23	24+
University Pathway Program	30	\$430	\$395

### Cambridge Exam Preparation Prices are per course

Course	Lessons	10 weeks	12 weeks	Dates
Intensive	25	\$4,000	\$4,800	See website
Super Intensive	30	\$4,450	\$5,340	See website

B2 First (FCE) - min Intermediate Level  
C1 Advanced (CAE) - min Upper- Intermediate Level

\*A combination of 20 Cambridge exam preparation lessons + 5/10 General English lessons.

### Professional Upper Intermediate (B2) level required

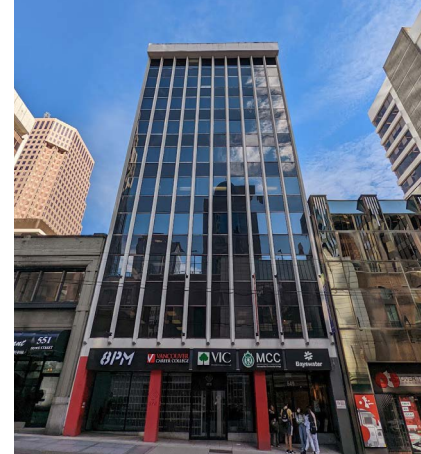
Professional Certification	Duration	20 lessons	Start Dates
Marketing	4 weeks	\$2,100	30 Jan, 24 Apr, 17 Jul, 9 Oct
Business Management	4 weeks	\$2,100	2 Jan, 27 Mar, 19 Jun, 11 Sep
Project Management	4 weeks	\$2,100	27 Feb, 22 May, 14 Aug, 6 Nov

### Premium Package\*

Professional and English	8 weeks	12 weeks	24 weeks	36 weeks	48 weeks
Any Canadian City Any Professional Certificate + English Course**	\$3,520	\$5,200	\$9,960	\$13,680	\$17,760
Extra week	\$440	\$430	\$415	\$380	\$370

\*Includes registration fee and material fees

\*\*Courses to be studied one course at a time, not simultaneously



▲ 549 Howe Street, 6th Floor  
Vancouver BC Canada V6C 2C2

### Quick Facts

#### All Courses Include

Online placement test  
Welcome activity  
Organised Social Programme  
Student Handbook  
End of Course Certificate  
WiFi

#### Professional courses

Minimum age: 18  
Class size: Max 16, Average 10

#### English Courses

Minimum age: 16  
Minimum stay: 1 week  
Courses start: Every Monday  
Class size: Max 15, Average 10

#### English Lessons

1 lesson: 45 min  
20 lessons: 15 hrs/week  
25 lessons: 18.75 hrs/week  
30 lessons: 22.5 hrs/week

Course Schedule is subject to  
change and availability

#### Centre Closure Dates

2 Jan 7 Aug  
20 Feb 4 Sep  
7 Apr 9 Oct  
22 May 13 Nov  
3 Jul 25 Dec - 1 Jan  
2024



bayswater.ac/vancouver

E-mail us  
partners@bayswater.ac

Call us  
+1-604-684-9577

Visit us  
549 Howe Street, 6th Floor, Vancouver BC Canada V6C 2C2

#### Agent Enquiries

Our Agents are appointed experts in your country and can  
give you specialist advice on our courses, as well as any visa  
requirements. Contact us for an Agent in your area.

For agent sales enquiries please contact us at  
partners@bayswater.ac



# Vancouver

## Accommodation, Transfers and Other Fees

### Accommodation Prices are per week

Homestay Age 16+		Full Board	Half Board
Single Room Shared Bathroom		\$285	\$260
Twin* Room Shared Bathroom		\$275	\$245
<b>Summer Supplement</b> 11 Jun - 26 Aug \$35 p/w	<b>Minors Fee</b> Students Under 18 years old \$50 p/w	<b>Dietary supplements</b> May incur charge	

\*Twin rooms are only available for two people travelling together

Students in a single room may be housed in the same homestay as other students

Students under 18 in a homestay must book, a return transfer and provide a custodianship consent form

Extra nights: billed on a pro rata basis

GEC Student Residences	Time	5-8 weeks	9-12 weeks	13-16 weeks	+16 weeks Monthly Rate
Shared bedroom, shared bathroom	20-40 min	\$350	\$343	\$336	\$1,200
Premium or sectional shared bedroom	20-40 min	\$371	\$364	\$357	\$1,300
Private bedroom, shared bathroom	20-40 min	\$441	\$434	\$427	\$1,600
<b>Security Deposit</b> Half month rent for monthly, 2-weeks for weekly rate		<b>Amenities Fee</b> Non-refundable \$78.75			

Minimum stay is 5 weeks. Only available to students 19 years old and older.

Includes bedding, kitchen supplies, utilities, WiFi, in-suite laundry, lounge and gym.

Semester monthly rates apply to bookings longer than 16 weeks.

### Other charges

Prices per booking	
Registration Fee	\$175
Accommodation Booking Fee	\$275
Bank Charges	\$35
Exam Fee - Cambridge & IELTS*	\$350
Custodianship Document	\$150
Professional Courses Materials Fee	\$40
Prices per week	
Materials Fee**	\$10
Insurance***	\$25

\* Optional Charges

\*\* Applies to all language and professional courses

\*\*\* Students must purchase Bayswater Insurance if living in Bayswater Student residences in Canada

All prices are subject to change



bayswater.ac/vancouver

E-mail us  
partners@bayswater.ac

Call us  
+1-604-684-9577

Visit us  
549 Howe Street, 6th Floor, Vancouver BC Canada V6C 2C2

#### Agent Enquiries

Our Agents are appointed experts in your country and can give you specialist advice on our courses, as well as any visa requirements. Contact us for an Agent in your area.

For agent sales enquiries please contact us at  
partners@bayswater.ac



▲ GEC - Student Residences - Vancouver and Burnaby, BC

### Quick Facts

#### Room Types

Single

Twin

#### Board Types

**Full Board:** 3 meals per day (breakfast, lunch and dinner). 21 meals per week

**Half Board:** 2 meals per day (breakfast and dinner). 14 meals per week

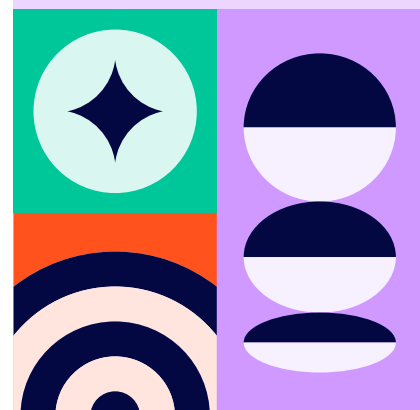
**Self-catering:** Room provided without meals

Residences are self-catering

#### Bathroom Types

**Shared Bathroom:** Bathroom shared with other residents and/or host family

**Arrival and departure day:**  
Sunday to Saturday



# Toronto

## Course Fees

### General English, Business and IELTS Preparation Prices and lessons are per week

Course	Lessons	1 to 11	12 to 23	24+
Standard	20	\$350	\$330	\$300
Intensive	25	\$400	\$385	\$350
Super Intensive	30	\$445	\$430	\$395

IELTS Preparation & Business English: Available in Standard 20 lessons.  
Can be combined with General English as part of an Intensive or Super Intensive Course  
Minimum level for IELTS Preparation: B1

English Plus Add-ons	Lessons	Price	Notes
One to One lessons	5	\$475	Custom packages available

University Preparation	Lessons	12 to 23	24+
University Pathway Program	30	\$430	\$395

### Cambridge Exam Preparation Prices are per course

Course	Lessons	10 weeks	12 weeks	Dates
Intensive	25	\$4,000	\$4,800	See website
Super Intensive	30	\$4,450	\$5,340	See website

B2 First (FCE) - min Intermediate Level

C1 Advanced (CAE) - min Upper- Intermediate Level

\*A combination of 20 Cambridge exam preparation lessons + 5/10 General English lessons.

### Professional Upper Intermediate (B2) level required

Professional Certification	Duration	20 lessons	Start Dates
Marketing	4 weeks	\$2,100	30 Jan, 24 Apr, 17 Jul, 9 Oct
Business Management	4 weeks	\$2,100	2 Jan, 27 Mar, 19 Jun, 11 Sep
Project Management	4 weeks	\$2,100	27 Feb, 22 May, 14 Aug, 6 Nov

### Premium Package\*

Professional and English	8 weeks	12 weeks	24 weeks	36 weeks	48 weeks
Any Canadian City Any Professional Certificate + English Course**	\$3,520	\$5,200	\$9,960	\$13,680	\$17,760
Extra week	\$440	\$430	\$415	\$380	\$370

\*Includes registration fee and material fees

\*\*Courses to be studied one course at a time, not simultaneously



▲ 5 Park Home Ave 6th floor,  
North York,  
Toronto ON M2N 6L4

### Quick Facts

#### All Courses Include

Online placement test  
Welcome activity  
Organised Social Programme  
Student Handbook  
End of Course Certificate  
WiFi

#### Professional courses

Minimum age: 18  
Class size: Max 16, Average 10

#### English Courses

Minimum age: 16  
Minimum stay: 1 week  
Courses start: Every Monday  
Class size: Max 15, Average 11

#### English Lessons

1 lesson: 45 min  
20 lessons: 15 hrs/week  
25 lessons: 18.75 hrs/week  
30 lessons: 22.5 hrs/week

Course Schedule is subject to  
change and availability

#### Centre Closure Dates

2 Jan 7 Aug  
20 Feb 4 Sep  
7 Apr 9 Oct  
22 May 25 Dec - 1 Jan  
3 Jul 2024



bayswater.ac/toronto

E-mail us  
partners@bayswater.ac

Call us  
+1-416-223-7855

Visit us  
5 Park Home Ave 6th floor, Toronto ON M2N 6L4

#### Agent Enquiries

Our Agents are appointed experts in your country and can  
give you specialist advice on our courses, as well as any visa  
requirements. Contact us for an Agent in your area.

For agent sales enquiries please contact us at  
partners@bayswater.ac

# Toronto

## Accommodation, Transfers and Other Fees

### Accommodation Prices are per week

Homestay Age 16+	Full board	Half Board
Single Room Shared Bathroom	\$285	\$260
Twin* Room Shared Bathroom	\$275	\$245
<b>Summer Supplement</b> 11 Jun - 26 Aug \$35 p/w	<b>Minors Fee</b> Students Under 18 years old \$50 p/w	<b>Dietary supplements</b> May incur charge

\*Twin rooms are only available for two people travelling together  
Students in a single room may be housed in the same homestay as other students  
Students under 18 in a homestay must book, a return transfer and provide a custodianship consent form  
Extra nights: billed on a pro rata basis

Seneca Newnham Residence Age 18+	Time	1-3 weeks	4-11 weeks	12+ weeks
Private room / shared bathroom	35 min	\$360	\$340	\$325

Availability: from 30 Apr to 2 Sep

Casa Toronto Residences Age 18+	Time	Per week
Shared room* / shared bathroom	25 min	\$325
Private room / shared bathroom	25 min	\$400

\*Shared rooms are only available for two people travelling together  
Placement fee: \$250

Dream House Age 18+	Time	Per week
Private room / shared bathroom	35 min	\$400
Private room / semi-private bathroom	35 min	\$450
Private room / private bathroom	35 min	\$500

Placement fee: \$250

Dream Apartments Age 18+	Time	Per week
Dream Apartments private room / shared bathroom	35 min	\$400
Dream Apartments private room / semi-private bathroom	35 min	\$450

Placement fee: \$250

### Other charges

Prices per booking	
Registration Fee	\$175
Accommodation Booking Fee	\$225
Bank Charges	\$35
Exam Fee - Cambridge & IELTS*	\$350
Custodianship Document	\$150
Professional Courses Materials Fee	\$40
Prices per week	
Materials Fee**	\$10
Insurance***	\$25

\* Optional Charges

\*\* Applies to all language and professional courses

\*\*\* Students must purchase Bayswater Insurance if living in Bayswater Student residences in Canada

All prices are subject to change

### Transfers

Airport	One Way
Pearson International	\$140



▲ Harrington Residence  
561 Sherbourne St Unit 2703

### Quick Facts

#### Room Types

Single

Twin

#### Board Types

**Full Board:** 3 meals per day (breakfast, lunch and dinner). 21 meals per week

**Half Board:** 2 meals per day (breakfast and dinner). 14 meals per week

**Self-catering:** Room provided without meals

**Residences are self-catering**

#### Bathroom Types

**En-suite:** Bedroom with adjoining private bathroom

**Shared Bathroom:** Bathroom shared with other residents and/or host family

**Arrival and departure day:**  
Sunday to Saturday



bayswater.ac/toronto

E-mail us  
partners@bayswater.ac

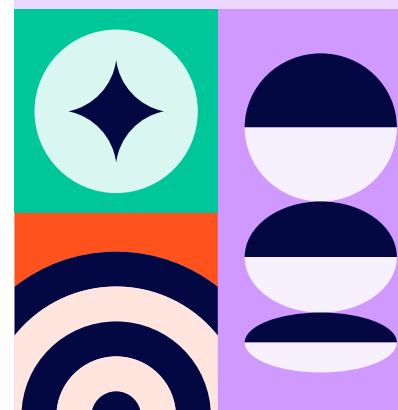
Call us  
+1-416-223-7855

Visit us  
5 Park Home Ave 6th floor, ON M2N 6L4

#### Agent Enquiries

Our Agents are appointed experts in your country and can give you specialist advice on our courses, as well as any visa requirements. Contact us for an Agent in your area.

For agent sales enquiries please contact us at  
partners@bayswater.ac



# Calgary

## Course Fees

### General English, Business and IELTS Preparation Prices and lessons are per week

Course	Lessons	1 to 11	12 to 23	24+
Standard	20	\$350	\$330	\$300
Intensive	25	\$400	\$385	\$350
Super Intensive	30	\$445	\$430	\$395

IELTS Preparation & Business English: Available in Standard 20 lessons.  
Can be combined with General English as part of an Intensive or Super Intensive Course  
Minimum level for IELTS Preparation: B1

English Plus Add-ons	Lessons	Price	Notes
One to One lessons	5	\$475	Custom packages available

University Preparation	Lessons	12 to 23	24+
University Pathway Program	30	\$430	\$395

### Professional Upper Intermediate (B2) level required

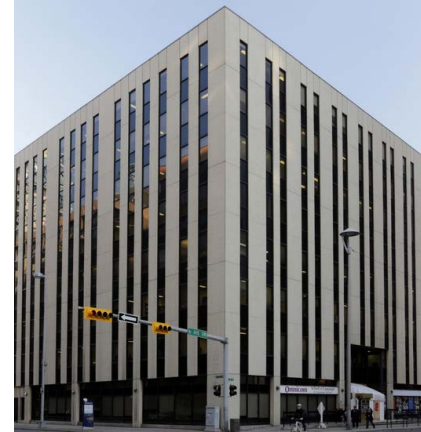
Professional Course	Duration	20 lessons	Start Dates
Marketing	4 weeks	\$2,100	30 Jan, 24 Apr, 17 Jul, 9 Oct
Business Management	4 weeks	\$2,100	2 Jan, 27 Mar, 19 Jun, 11 Sep
Project Management	4 weeks	\$2,100	27 Feb, 22 May, 14 Aug, 6 Nov

### Premium Package\*

Professional and English	8 weeks	12 weeks	24 weeks	36 weeks	48 weeks
Any Canadian City Any Professional Certificate + English Course**	\$3,520	\$5,200	\$9,960	\$13,680	\$17,760
Extra week	\$440	\$430	\$415	\$380	\$370

\*Includes registration fee and material fees

\*\*Courses to be studied one course at a time, not simultaneously



▲ 840 6 Ave SW,  
Calgary, AB T2P 3E5

### Quick Facts

#### All Courses Include

Online placement test  
Welcome activity  
Organised Social Programme  
Student Handbook  
End of Course Certificate  
WiFi

#### Professional courses

Minimum age: 18  
Class size: Max 16, Average 10

#### English Courses

Minimum age: 16  
Minimum stay: 1 week  
Courses start: Every Monday  
Class size: Max 15, Average 10

#### English Lessons

1 lesson: 45 min  
20 lessons: 15 hrs/week  
25 lessons: 18.75 hrs/week  
30 lessons: 22.5 hrs/week

Course Schedule is subject to  
change and availability

#### Centre Closure Dates

2 Jan 7 Aug  
20 Feb 4 Sep  
7 Apr 9 Oct  
22 May 13 Nov  
3 Jul 25 Dec - 1 Jan  
2024



bayswater.ac/calgary

E-mail us  
partners@bayswater.ac

Call us  
+1 403-265-6936

Visit us  
840 6 Ave SW, Calgary AB T2P 3E5

#### Agent Enquiries

Our Agents are appointed experts in your country and can  
give you specialist advice on our courses, as well as any visa  
requirements. Contact us for an Agent in your area.

For agent sales enquiries please contact us at  
partners@bayswater.ac



# Calgary

## Accommodation, Transfers and Other Fees

### Accommodation Prices are per week

Homestay Age 16+	Full-board	Half Board
Single Room Shared Bathroom	\$270	\$255

<b>Summer Supplement</b> 11 Jun - 26 Aug \$35 p/w	<b>Minors Fee</b> Students Under 18 years old \$50 p/w	<b>Dietary supplements</b> May incur charge
--	---	--

Students in a single room may be housed in the same homestay as other students  
Students under 18 in a homestay must book, a return transfer and provide a custodianship consent form  
Extra nights: billed on a pro rata basis

The HUB Student Residence Age 18+	Time	2-4 weeks	5-11 weeks	12-23 weeks	24+ weeks
Single Deluxe room, shared bathroom	20 min	\$350	\$300	\$275	\$250

<b>Refundable Security Deposit</b> \$200	<b>Laundry Card</b> \$1.75 per load
---	--

Private room in a shared apartment.  
Free bedding, towels, kitchen supplies, utilities, Wifi, lounge, and gym.

### Other charges

Prices per booking	
Registration Fee	\$175
Accommodation Booking Fee	\$200
Bank Charges	\$35
Exam Fee - IELTS*	\$350
Custodianship Document	\$150
Professional Courses Materials Fee	\$40
Prices per week	
Materials Fee**	\$10
Insurance***	\$25

\* Optional Charges

\*\* Applies to all language and professional courses

\*\*\* Students must purchase Bayswater Insurance if living in Bayswater Student residences in Canada

### Transfers

Airport	One Way
Calgary International	\$140



▲ The HUB Student Residence  
2416 16 Ave NW,  
Calgary AB T2M 5C7

### Quick Facts

#### Room Types

Single

#### Board Types

**Full Board:** 3 meals per day (breakfast, lunch and dinner). 21 meals per week

**Half Board:** 2 meals per day (breakfast and dinner). 14 meals per week

**Self-catering:** Room provided without meals

**Residences are self-catering**

#### Bathroom Types

**Shared Bathroom:** Bathroom shared with other residents and/or host family

**Arrival and departure day:**  
Sunday to Saturday

All prices are subject to change



bayswater.ac/calgary

E-mail us  
partners@bayswater.ac

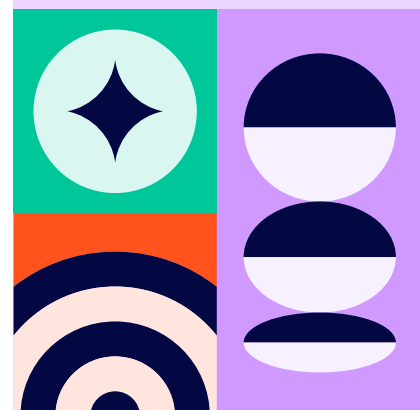
Call us  
+1 403-265-6936

Visit us  
840 6 Ave SW, Calgary, AB T2P 3E5

#### Agent Enquiries

Our Agents are appointed experts in your country and can give you specialist advice on our courses, as well as any visa requirements. Contact us for an Agent in your area.

For agent sales enquiries please contact us at  
partners@bayswater.ac



# Cape Town

## Course Fees

### General English and IELTS Preparation Prices and lessons are per week

Course	Lessons	1 to 11	12 to 23	24+
Standard	20	€250	€220	€200
Intensive	25	€300	€260	€230
Super Intensive	30	€340	€300	€260

IELTS Preparation: Available in Intensive or Super Intensive.

A combination of 20 or 25 General English lessons + 5 dedicated IELTS lessons

Minimum level for IELTS Preparation: B1

English Plus Add-ons	Lessons	Price	Notes
One to One lessons	5	€325	Custom packages available

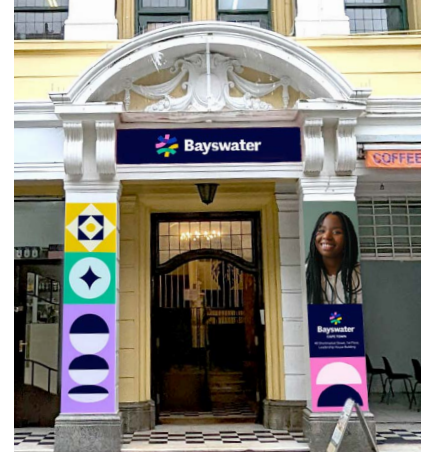
Family Options	Lessons	1+	Extra adult/child	Course Dates
Young Learner (age 10+)	20	€250		3 Jan, 6 Mar, 12 Jun, 11 Sep, 06 Nov
Parent & Child (age 10+)	20	€460	€230	
Family activity programme	3	€95		

### Cambridge Exam Preparation Prices are per course

Course	Lessons	10 weeks	12 weeks	Dates
Intensive	25	€3,000	€3,600	See website
Super Intensive	30	€3,400	€4,080	See website

B2 First (FCE) - min Intermediate Level

C1 Advanced (CAE) - min Upper- Interemmediate Level



▲ Leadership House Building  
40 Shortmarket Street

### Quick Facts

#### All Courses Include

Online placement test  
Welcome activity  
Organised Social Programme  
Student Handbook  
End of Course Certificate  
WiFi

#### English Courses

Minimum age: 16  
Minimum stay: 1 week  
Courses start: Every Monday  
Class size: Max 15, Average 10

#### English Lessons

1 lesson: 45 min  
20 lessons: 15 hrs/week  
25 lessons: 18.75 hrs/week  
30 lessons: 22.5 hrs/week

#### Family Options

Parent & Child, Young Learner  
(Mon-Fri)  
Tuition only

Course Schedule is subject to  
change and availability

#### Centre Closure Dates

2 Jan 16 Jun  
21 Mar 9 Aug  
7,10, 27 Apr 25 Sep  
1 May 22 Dec - 1 Jan  
2024



bayswater.ac/cape-town

E-mail us  
partners@bayswater.ac

Call us  
+27 71 888 4828

Visit us  
Leadership House Building, 40 Shortmarket Street

#### Agent Enquiries

Our Agents are appointed experts in your country and can  
give you specialist advice on our courses, as well as any visa  
requirements. Contact us for an Agent in your area.

For agent sales enquiries please contact us at  
partners@bayswater.ac



# Cape Town

## Accommodation, Transfers and Other Fees

### Accommodation Prices are per week

Homestay Age 16+	Half Board
Single Room - Shared Bathroom	€175
Single Room - Private Bathroom	€230
Twin room - Shared Bathroom*	€132
Twin Room - Private Bathroom*	€175

#### Dietary supplements

€30-55 p/w

Students in a single room may be housed in the same homestay as other students

Students under 18 in a homestay must book at least Half Board, a return transfer and provide a guardian consent form

\*Twin rooms are only available for two people travelling together

Residences Age 18+	Time	Self Cater
Neighbourgood, Ensuite room with shared kitchen facilities	5 min 	€180
Student at Home, Single room with shared kitchen & bathroom	5 min 	€145

#### Non-refundable lease fee

€70 (one-off)

### Other charges

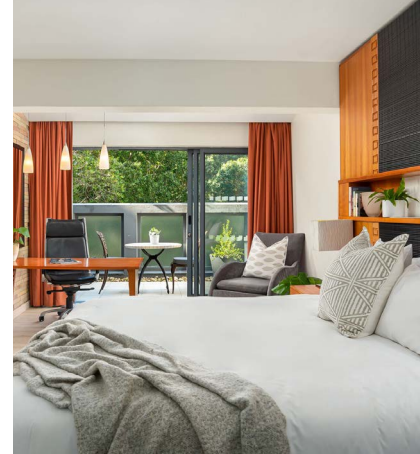
Prices per booking	
Registration Fee	€70
Accommodation Booking Fee	€40
Bank Charges	€12
Exam Fee - Cambridge*	€350
Prices per week	
Materials Fee**	€6

\* Optional Charges

\*\*Applies to all language and professional courses

### Transfers

Airport	One Way
Cape Town International	€55



▲ Neighbourgood, 60  
Corporation Street, Cape Town

### Quick Facts

#### Room Types

Single 

Twin 

Single apartment

Shared apartment

#### Board Types

**Half Board:** Room, breakfast and one evening meals provided

**Self-catering:** Room provided without meals

Residences are self-catering

#### Bathroom Types

**En-suite:** Bedroom with adjoining private bathroom

**Shared Bathroom:** Bathroom shared with other residents and/or host family

Arrival and departure day:  
Sunday to Saturday

All prices are subject to change



bayswater.ac/cape-town

E-mail us  
partners@bayswater.ac

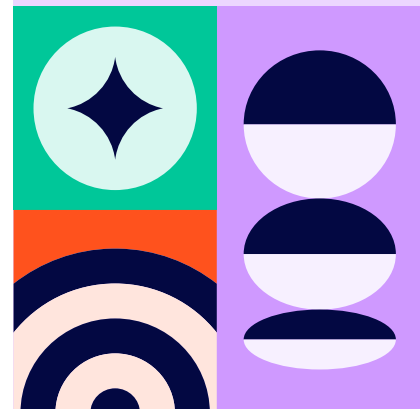
Call us  
+27 71 888 4828

Visit us  
40 Shortmarket Street, Leadership House Building

#### Agent Enquiries

Our Agents are appointed experts in your country and can give you specialist advice on our courses, as well as any visa requirements. Contact us for an Agent in your area.

For agent sales enquiries please contact us at  
partners@bayswater.ac



# Paris

## Course Fees

### General French Prices and lessons are per week

Course	Lessons	1 to 11	12 to 23	24+
Standard	20	€320	€280	€240
Intensive	25	€360	€320	€280
French Plus Add-ons		Price	Notes	
One to One lessons		5	€325	Custom packages available
Family Options		Lessons	1+	Extra adult/child Course dates
Young Learner*		20	€320	3 Jul, 17 Jul, 7 Aug
Parent & Child*		20	€580	
Family activity programme		3	€95	

\* Age 10+  
Young Learners must be accommodated with a parent/guardian

### Professional Taught in English - B2 level required

Fashion	Duration	Price	Start Dates
Luxury Brand Management Certificate	4 weeks	€1,750	7 Aug, 4 Sep
Fashion Communication Certificate	4 weeks	€1,750	2 Oct

### DELFDALF Exam Preparation Prices are per course

Course	Lessons	1 to 11	Dates
Intensive	25	€360	See website



▲ 13 Passage Dauphine,  
75006 Paris

### Quick Facts

#### All Courses Include

Online placement test  
Welcome activity  
Organised Social Programme  
Student Handbook  
End of Course Certificate  
WiFi

#### Professional Courses

Minimum age: 18  
Class Size: Max 16, Average 10

#### French Courses

Minimum age: 16  
Minimum stay: 1 week  
Courses start: Every Monday  
Class size: Max 15, Average 10

#### French Lessons

1 lesson: 45 min  
20 lessons: 15 hrs/week  
25 lessons: 18.75 hrs/week

#### Family Options

Parent & Child, Young Learner  
(Mon-Fri) Tuition only

Course schedule is subject to  
availability

#### Centre Closure Dates

1 Jan 15 Aug  
10 Apr 1, 11 Nov  
1, 8, 18, 29 May 23 Dec  
14 Jul to 1 Jan 2024

#### Beginner Course Dates

2 Jan 3 Jul  
13 Feb 7 Aug  
20 Mar 4 Sep  
24 Apr 9 Oct  
5 Jun 13 Nov



bayswater.ac/paris

E-mail us  
partners@bayswater.ac

Call us  
+33 1 40 46 72 00

Visit us  
13 Passage Dauphine, 75006 Paris, France

#### Agent Enquiries

Our Agents are appointed experts in your country and can  
give you specialist advice on our courses, as well as any visa  
requirements. Contact us for an Agent in your area.

For agent sales enquiries please contact us at  
partners@bayswater.ac



# Paris

## Accommodation, Transfers and Other Fees

### Accommodation Prices are per week

Homestay Age 16+	Bed & Breakfast	Half Board
Single shared bathroom	€295	€390
<div> <div> <b>Dietary supplements</b>                      Bed &amp; Breakfast - €55                      Half board - €75                 </div> <div> <b>Private bathroom</b>                      En-suite or exclusive use €75                 </div> <div> <b>Extra night</b>                      Bed &amp; Breakfast - €50                      Half board - €65                 </div> </div>		

Students in a single room may be housed in the same homestay as other students

Students under 18 in a homestay must book at least Half Board, a return transfer and provide a guardian consent form

Residences Age 18+	Time	1-4 weeks	5+
Noisy-Le-Grand Single room, private shower, shared bathroom	40 min	€295	€270

### Other charges

Prices per booking	
Registration Fee	€80
Accommodation Booking Fee	€50
Bank Charges	€12
Exam Fee - DELF A2	€190
Exam Fee - DELF B1	€225
Exam Fee - DELF B2	€280
Exam Fee - DALF C1	€280
Professional Courses Materials Fee	€24
Prices per week	
Materials Fee**	€6

\* Optional Charges

\*\*Applies to all language and professional courses

### Transfers

Airport/Station	One Way
Orly Airport	€115
Charles de Gaulle Airport	€115
Any Paris Train Station	€90



▲ Noisy-Le-Grand Residence  
2 Bd du Levant,  
Noisy-le-Grand 93160

### Quick Facts

#### Room Types

Single

Studio

1-bed apartment

#### Board Types

**Bed & breakfast:** Room and breakfast provided

**Half Board:** Room, breakfast and one evening meals provided

**Self-catering:** Room provided without meals

**Residences are self-catering**

#### Bathroom Types

**En-suite:** Bedroom with adjoining private bathroom

**Shared Bathroom:** Bathroom shared with other residents and/or host family

**Arrival and departure day:**  
Sunday to Saturday

All prices are subject to change



bayswater.ac/paris

E-mail us  
partners@bayswater.ac

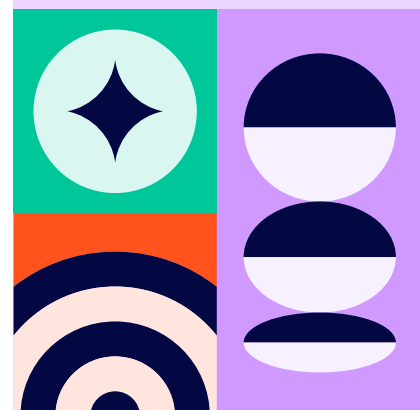
Call us  
+33 1 40 46 72 00

Visit us  
13 Passage Dauphine, 75006 Paris, France

#### Agent Enquiries

Our Agents are appointed experts in your country and can give you specialist advice on our courses, as well as any visa requirements. Contact us for an Agent in your area.

For agent sales enquiries please contact us at  
partners@bayswater.ac



# Cyprus

## Course Fees

### General English and IELTS Preparation Prices and lessons are per week

Course	Lessons	1 to 11	12 to 23	24+
Standard	20	€245	€205	€170
Intensive	25	€295	€235	€200
Combination course	30	€545	€485	€440

IELTS Preparation Available in Standard 20 lessons. Can be combined with General English as part of an Intensive Course  
Minimum level for IELTS preparation: B1

One-to-One and Small Group	Lessons	Price	Extra lesson
One to One lessons	5	€250	€50
Additional person		€15 (per lesson)	

### Family and Young Learners

Family Options	Lessons	1+	Extra adult/child
Parent & Child	20	€470	€210
Young Learner (age 5 - 15)	Lessons	1+	
Standard English	20	€260	€210

### Summer Camp

Course & ages	Accomm. & Catering	Lessons	Dates	Price
UCLan Summer Camp (ages 12-17)	Twin en-suite, full-board	20	25 June - 13 August	€875
Limassol Day Camp (ages 7-15)	Lunch + snack, no accomm	20	19 June - 11 August	€385



▲ 138 Vasileos Constantinou  
Limassol 3080 Cyprus

### Quick Facts

#### All Courses Include

Online placement test  
Welcome activity  
Organised Social Programme  
End of Course Certificate  
WiFi

#### English Courses

Minimum age: 16  
Minimum stay: 1 week  
Courses start: Every Monday  
Class Size: Max 15, Low season  
avg. 6, High season av. 12

#### English Lessons

1 lesson: 45 min  
20 lessons: 15 hrs/week  
25 lessons: 18.75 hrs/week  
30 lessons: 22.5 hrs/week

#### Family Options

Parent & Child, Young Learner (Mon-Fri)  
Tuition only

Day Camp (Mon-Fri)  
Tuition, lunch and half day activities

Course schedule is subject to availability

#### Centre Closure Dates

1-6 Jan 5 Jun  
27 Feb 15 Aug  
14,17 Apr 25 Dec-5 Jan  
1 May 2024



# Cyprus

## Accommodation, Transfers and Other Fees

### Accommodation Prices are per week

Student Residence & Hotel Age 18+ <small>Age 18+ and accompanied children</small>	Winter rate	High season
<b>Student Residence</b>	1 Jan-31 May, 1 Nov-31 Dec	1 Jun-31 Oct
Student Residence Single En-Suite SC	€285	€535
Student Residence Twin En-Suite SC	€205	€330

<b>Triple/Quad Rooms</b> €100 p/w	<b>Bed &amp; Breakfast</b> €56 p/w (adult) €28 p/w (child)	<b>Half Board</b> €112 p/w (adult) €56 p/w (child)
--------------------------------------	---	---

Residence includes shuttle bus to and from school if booked directly through English in Cyprus  
Residence facilities including reception, catering and pool are not available between November and March

Hotel & Apartment	1 Jan-30 April, 1 Nov-31 Dec	1 May-31 Oct
Tasiana Star Hotel Apartment Single En-Suite SC	€365	€485
Tasiana Star Twin Hotel Apartment En-Suite SC	€225	€300
Navarria Blue Hotel Single En-Suite BB	€370	€480
Navarria Blue Hotel Twin En-Suite BB	€220	€270

**Tasiana Star**  
Bed & Breakfast 42 p/w

Homestay Age 16+	B&B	Half Board
Single Shared Bathroom	€200	€250

Students in a single room may be housed in the same homestay as other students

<b>Homestay Summer Supplement</b> 4 Jun - 3 Sep €30 p/w	<b>Dietary supplements</b> €30-55 p/w
--	--

### Other charges

Prices per booking	
Registration Fee	€70
Accommodation Booking Fee	€50
English in Cyprus	1-2 people €75
Shuttle bus per week	3-4 people €90
Credit card fee	1.50%
Prices per week	
Materials Fee**	€6

\* Optional Charges

\*\*Applies to all language and professional courses

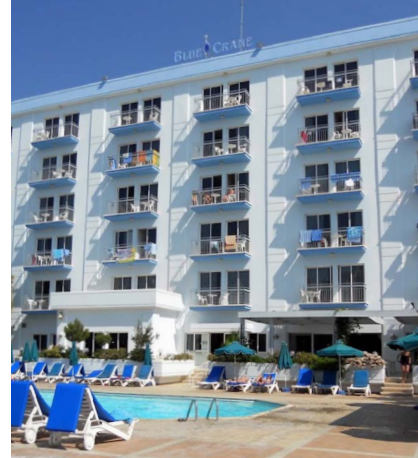
All prices are subject to change

Summer Residence Age 18+	Self Catering
1-Bed Studio	€260

Available 02 July - 27 August

### Transfers

Larnaca or Paphos	One way
Medium 1-4 people with 3 bags	€80
Large 3-6 people with 6 bags	€100
Summer Camp Transfers	One way
Larnaca	
Medium 1-4 people with 3 bags	€45
Large 3-6 people with 6 bags	€55
Paphos	
Medium 1-4 people with 3 bags	€180
Large 3-6 people with 6 bags	€200



▲ Blue Crane 74 Amathus  
Avenue, Agios Tychonas 4532

### Quick Facts

#### Room Types

Single 🛏

Twin 🛏🛏

Studio 🛏🛏

#### Board Types

**Bed & breakfast (BB):** Room and breakfast provided

**Half Board:** Room, breakfast and one evening meals provided

**Self-catering (SC):** Room provided without meals

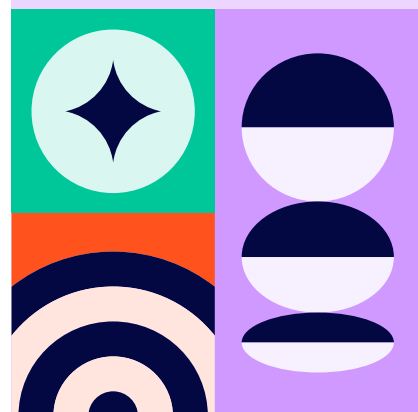
Residences are self-catering  
Summer Residence self-catering

#### Bathroom Types

**En-suite:** Bedroom with adjoining private bathroom

**Shared Bathroom:** Bathroom shared with other residents and/or host family

Arrival and departure day:  
Sunday to Sunday



# Find out more

## Agent enquiries

Our agents are appointed experts in your country and can give you specialist advice on our courses, as well as any visa requirements. Contact us for an agent in your area. For agent sales enquiries please contact us at [partners@bayswater.ac](mailto:partners@bayswater.ac)

## Email us

[partners@bayswater.ac](mailto:partners@bayswater.ac)

## Call us

+44 (0)20 7221 7259

## Visit us

167 Queensway, London W2 4SB



[bayswatercollege](#)



[studybayswater](#)



[bayswater.ac](#)

A social education enterprise  
made in London

05042023-00002



# Bayswater

