



SPROTT SHAW LANGUAGE COLLEGE

VANCOUVER - TORONTO - VICTORIA
CANADA



STUDY
GROW
EXPLORE

 studyslcl.com



SPROTT SHAW LANGUAGE COLLEGE

With over **20 years of experience** in language training, SSLC has everything you need to advance your learning goals. From **innovative language instruction, exciting activities, to friendly and professional service**, SSLC offers a complete language, vacation, or academic journey to every student, from children to adults.

YOUR *future*
BEGINS AT SSLC!



ACCREDITATIONS



**CHOOSE YOUR
STUDY DESTINATION!**



© DESTINATION VANCOUVER

VANCOUVER

Located on Canada's west coast, Vancouver is an excellent choice for your studies. Whether you like sports, festivals, or hiking, Vancouver has something for everyone. With a mild climate year-round and unparalleled natural beauty, Vancouver is a vibrant and exciting destination for students from around the world.



© DESTINATION TORONTO

TORONTO

Toronto is Canada's largest city, and an inclusive environment for international students wishing to study in a lively multicultural city. From cultural festivals, to sports events, to international cuisine, Toronto has so much to offer. Check out the Art Gallery of Ontario, or spend time in High Park. SSLC ensures students have the opportunity to explore the city and experience the best of Toronto!



**CHOOSE YOUR
STUDY DESTINATION!**

© DESTINATION VICTORIA

VICTORIA

Looking for the friendly atmosphere in a smaller city? Victoria has everything students need to have a Canadian experience. While studying on beautiful Vancouver Island, on the west coast of Canada. Visit Butchart Gardens, the Royal BC Museum, or go whale watching to fully take in the picturesque charm of Victoria and the surrounding area.

SSLC PROGRAMS

ESL

ESL **GROW** - General English As A Second Language

SPECIALIZED

EPE English For Post Secondary Education

PMM Power Speaking & Modern Media

IELTS International English Language Testing System

CE Career English

CACCT Communication For Airline And Cabin Crew

TOEIC Test Of English For International Communication

SEASONAL

ECF English for Children and Family

GL Global Leaders

AC Active Communication

ERL English for Real Life

GTS Good Time Summer

ET English for Technology

ME Medical English



PROGRAM CUSTOMIZATION

Need customized English training?
We have several options to meet
your needs.



CLOSED GROUPS

- ESL + activities
- Specialized programs + activities



CUSTOMIZED PROGRAM DELIVERY

Examples include:

- **Medical English** for closed groups with field trips and guest speakers
- **Career English** closed groups with topics tailored for your needs
- **General ESL** closed group with related field trips

For more information, contact
info@studyslsc.com



“

Studying at SSLC was, without a doubt, one of the best experiences of my life. The classes and materials are complete, the teachers explain very well and always try to answer your questions. The school environment is super welcoming and comfortable, and the professionals are very attentive. I highly recommend it if you have the opportunity to study there, and I hope to return one day.

- Marina C.

”



GENERAL ESL

GROW + 21ST CENTURY SKILLS

9:00am - 12:00pm | Monday - Friday

We are excited to introduce our NEW General ESL Program: **GROW**. Designed to integrate all skills for a communicative language learning experience. Learn and use all skills to reach several learning objectives each week. Receive weekly feedback on all skills.

GROW students not only study English, they study for future employability, personal growth, and academic excellence. GROW integrates 21st Century Skills with language learning. Study in each level for 8-10 weeks

GROW



GRAMMAR

focus on three lessons per week



READING

based on a weekly theme, with connections to grammar and vocabulary



ORAL SKILLS

practiced in three lessons each week, with a weekly speaking evaluation



WRITING

for targeted skills with immediate teacher and peer feedback

21ST CENTURY SKILLS

COMMUNICATION

- listening skills
- sharing ideas and opinions
- presentation skills
- multiple methods and mediums of communication

CREATIVITY

- teamwork
- giving and receiving feedback
- peer editing
- flexibility and leadership



CRITICAL THINKING

- answering open-ended questions
- problem solving
- providing explanations and reasons

COLLABORATION

- relating lessons to real life
- generating creative solutions
- applying learning to personal life
- refining of knowledge



GROW LEVELS

GROW Level	CEFR	IELTS
Foundations	A1	1-1.5
Beginner	A2	3
Pre-Intermediate	A2+	4
Intermediate	B1	4.5
Upper-Intermediate	B1+	5
Pre-Advanced	B2	5.5
Advanced	B2+	6
Upper-Advanced	C1	6.5

Check our equivalency chart for more details

SCHEDULE OPTIONS

PROGRAM	HOURS PER WEEK
GROW	15 hours
GROW + Mastery of Skills X 1	20 hours
GROW + Mastery of Skills X 2	25 hours
Mastery of Skills X 2	10 hours
Mastery of Skills X 1	5 hours

GENERAL ESL MASTERY OF SKILLS

1:00pm - 3:00pm | Monday - Friday

Hone specific skills with our Mastery of Skills classes and take learning into your own hands. In the afternoon, choose skill-focused, level-specific classes in Grammar, Communication, Vocabulary,

Listening, and Writing (specific class options may vary by campus). Communication classes are offered at all locations.



GENERAL ESL SCHEDULE

	MONDAY	TUESDAY	WEDNESDAY	THURSDAY	FRIDAY
GROW CLASS 1 (9 am - 12 pm)	LESSON 1 Vocabulary + Grammar	LESSON 2 Vocabulary + Grammar	LESSON 3 Vocabulary + Grammar	LESSON 4 Discussion & Reading	Homework check + review
	Vocabulary + Grammar	Vocabulary + Grammar	Vocabulary + Grammar	LESSON 5 Writing	Assessment
	Listening / Conversation	Listening / Conversation	Listening / Conversation	Writing & Revising Practice	Feedback and unit wrap-up
<i>LUNCH: 12 pm - 1 pm</i> <i>AFTERNOON CLASSES: 1 pm - 3 pm 12 weeks each</i>					
CLASS 2 (1 pm - 2 pm)	Mastery of Skills* ①				
CLASS 3 (2:15 pm - 3 pm)	Mastery of Skills* ②				
EXTRA FREE CLASSES (3:15 pm - 4 pm)	Extra Free Classes: Choose your favourites and improve your studies! (See page 22 for samples)				

Schedule subject to change

** Mastery of Skills class options and schedule will vary by campus and season. Options include: writing, pronunciation, listening, reading and writing, and more.*

EPE PATHWAY

EPE (ENGLISH FOR POST-SECONDARY EDUCATION PATHWAY PROGRAM)



- **Entry requirement:**

Completion of GROW B1+, CE, PMM, or an official test score: IELTS 5.5 (5.5 in writing), TOEIC 650, TOEFL 61, Duolingo 95, pass the SSLC Entrance Exam AND complete an Entrance Interview and Essay.

- **Duration:** 12 weeks (optional 4 or 8 week duration)

EPE Pathway is designed for students who want to pursue post-secondary education in Canada. Successful EPE Pathway students can apply to select partner institutions without an official entrance test or other official test scores.

Students can expect to learn and improve their skills in several important areas:

- **Citations** - Chicago, APA, MLA.
- **Proper essay writing** - compare & contrast, argumentative, cause & effect.
- **Reading skills** - book club discussions, skimming & scanning.
- **Communication** - listening and discussion activities.
- **Grammar** - grammar needed for intermediate to upper-intermediate communication.

Students in EPE Pathway are exposed to a variety of university-level topics and can expect to improve study habits and be challenged academically.

Talk with an SSLC advisor for Pathway Partner start dates and specific requirements

“

I Took the pathway as a prerequisite to study at the UVIC, and it was the best course to prepare myself to have the academic level that is needed. I feel more comfortable and prepared!

- Montse P.

”



PATHWAY PARTNERS

 ALGONQUIN COLLEGE	 CAMBRIAN COLLEGE	 CENTENNIAL COLLEGE	 Georgian	 Lakehead UNIVERSITY
 Lambton College	 Laurentian University Université Laurentienne	 nc Niagara College Canada	 Seneca POLYTECHNIC	 St. Lawrence COLLEGE
 ST. CLAIR COLLEGE	 TRENT UNIVERSITY	 Toronto Film School	 LAURIER <i>Inspiring Lives.</i>	 YORKVILLE UNIVERSITY
 ACSENDA SCHOOL OF MANAGEMENT VANCOUVER	 CANADIAN Tourism College	 CAPILANO UNIVERSITY	 City University in Canada	 FAIRLEIGH DICKINSON UNIVERSITY
 fic Fraser International College	 Institute of Technology Development of Canada	 JCI INSTITUTE	 LANGLEY FLYING SCHOOL	 LaSalle College
 NIC VANCOUVER ISLAND, CANADA	 pda PACIFIC DESIGN ACADEMY	 Royal Roads UNIVERSITY	 SPROTT SHAW COLLEGE SINCE 1966	 THOMPSON RIVERS UNIVERSITY
 IMI INTERNATIONAL MANAGEMENT INSTITUTE SWITZERLAND	 University of Victoria Continuing Studies	 UNIVERSITY CANADA WEST	 vanarts VANCOUVER INSTITUTE of MEDIA ARTS	 vam VANCOUVER ACADEMY OF MUSIC
 VFS VANCOUVER FILM SCHOOL	 VANCOUVER INTERNATIONAL COLLEGE	 WAS WHISTLER ADVENTURE SCHOOL	 ACADIA UNIVERSITY	 150 MOUNT SAINT VINCENT UNIVERSITY
 UNIVERSITY of Prince Edward ISLAND	 University of Regina	 FULL SAIL UNIVERSITY	 SEATTLE CENTRAL COLLEGE One of the Seattle Colleges	



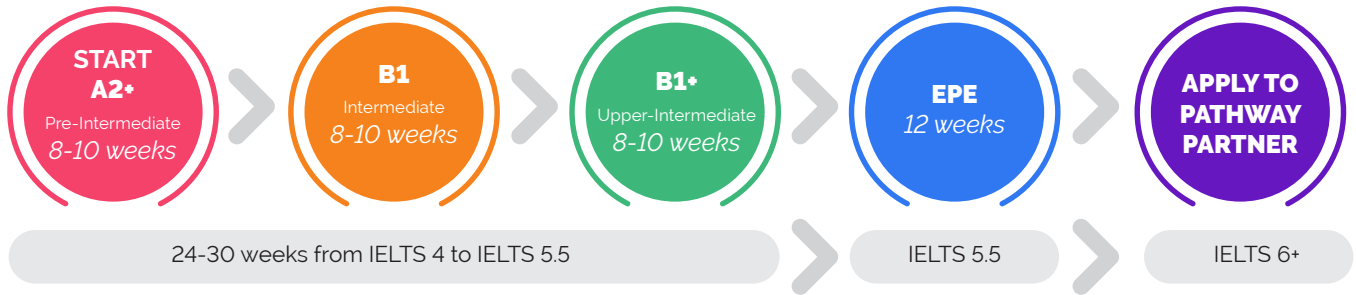
SSLC Pathway Program Advantages

- Bypass English language entry requirements for select partners colleges and universities.
- Small class sizes for optimum academic benefit.
- Academic preparation covering all areas: reading, writing, speaking, vocabulary, study skills and note taking.
- Access to experienced and helpful teachers, informative pathway advisors and knowledgeable academic advisors.
- Assistance with application procedures.

EPE PATHWAY

EXAMPLE EPE PATHWAY TIMELINES

ESL + EPE + Pathway Partner



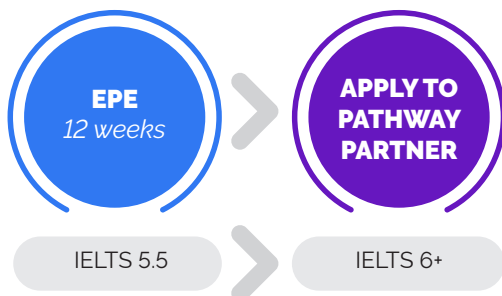
Duration will depend on individual student ability

Specialized Program + EPE + Pathway Partner



Duration will depend on individual student ability

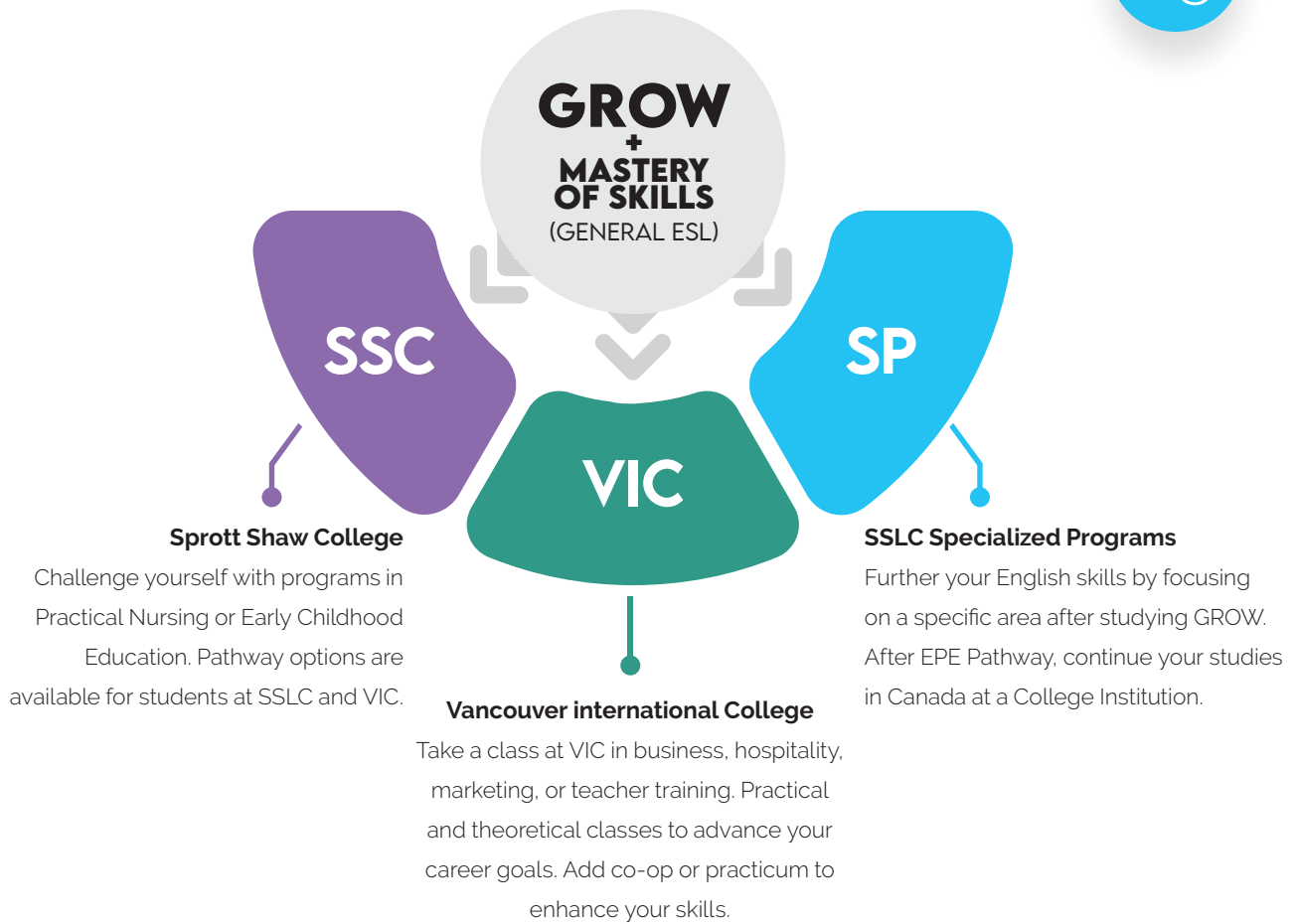
EPE + Pathway Partner



Duration will depend on individual student ability



AFFILIATIONS



Interested in **study and work** options? Check out these programs at our affiliated schools:



Vancouver International College

- Global Business Expertise
- Customer Service Professional
- Digital marketing Professional
- TESOL



Spratt Shaw College

- Early Childhood Education Programs
- Practical Nursing
- Pharmacy Assistant
- Electrical Foundations Apprenticeship



SSLC, VIC, and SSC are subsidiaries of Global Education Communities Corp, which also includes GEC student housing.



SPECIALIZED PROGRAMS

CE (CAREER ENGLISH)



- **Entry Requirement:**

Completion of GROW A2+ or an official test score: IELTS 4.5, TOEIC 550, TOEFL 45, Duolingo 65

- **Duration:** 4-8 weeks full-time | 4-16 weeks part-time

Students in our Career English program cover a wide range of topics related to professional and business English. From intercultural communication, to finance, to career preparation, this program guides learners to become confident English users in their professional lives.

Topics

Full-time topics (Vancouver)

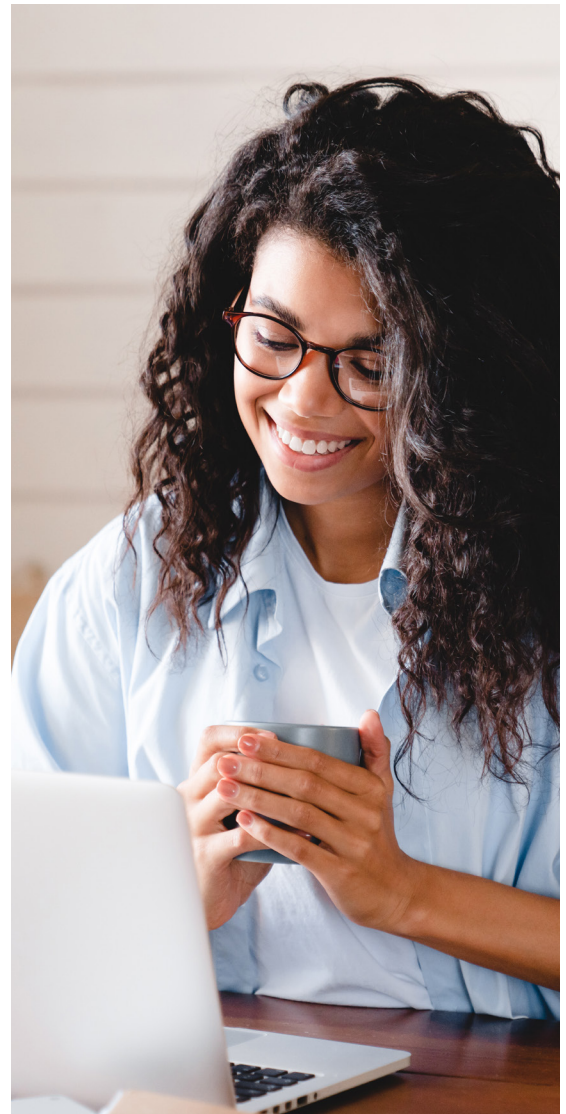
- Career Preparation 1 – Resumes and job interviews
- Customer Service
- Intercultural Communication
- Finance
- Career Preparation 2 – Networking
- Ethics and Structures
- Advertising
- Starting your own company

Part-Time Topics - Career English 101 (Toronto)

- Career Choices
- Business Sectors
- Projects
- Global Markets
- Organization
- Brands
- Job hunting
- Business Strategy
- Design And Innovation
- Safety And Security
- Customer Service
- Communication
- Logistics
- Working Abroad
- Entrepreneurs
- Leadership

SSLC Career English Program Advantages

- Become a proficient communicator in a professional environment
- Learn how to negotiate, conduct meetings and communicate in a clear and effective way
- Develop creative problem-solving skills, improve your cultural and ethical awareness, and build your confidence as a communicator in various global and local contexts.



SPECIALIZED PROGRAMS

PMM (POWER SPEAKING AND MODERN MEDIA)



• **Entry Requirement:**

Completion of GROW A2+ or an official test score: IELTS 4.5, TOEIC 550, TOEFL 45, Duolingo 65

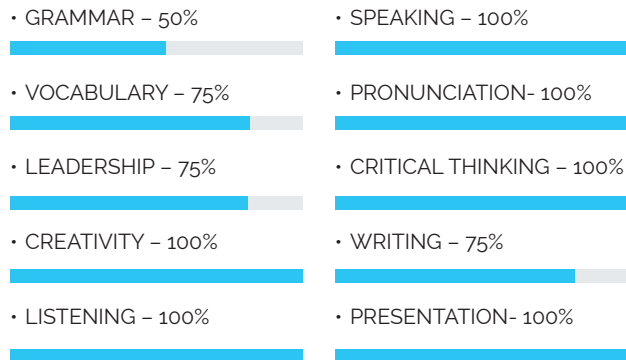
• **Duration:** : 4 to 8 weeks

Power Speaking and Modern Media (PMM) gives students the confidence to speak in public, while exposing them to a variety of topics relevant to today. Students gain valuable experience giving presentations, building fluency, and exploring current events.

Topics

- Networking
- Social Media
- Music
- Social Problems
- Popular Culture
- Television
- Culture
- Canada
- Movies and Story Telling
- The Future of Employment
- News and Journalism
- Stereotypes

Skills Learned



SPECIALIZED PROGRAMS

ME (MEDICAL ENGLISH)



- **Entry Requirement:**

Completion of GROW B1 or an official test score: IELTS 5, TOEIC 600, TOEFL 50, Duolingo 80

- **Duration:** 4 week full-time available on request

Suitable for both pre-experience and experienced healthcare professionals, this program builds communication skills necessary to successfully interact with patients and various health care colleagues in various medical fields. Immerse yourself in a broad range of practical topics, such as vital signs, pain, medical terminology, and communication strategies.



ET (ENGLISH FOR TECHNOLOGY)



- **Entry Requirement:**

Completion of GROW B1 or an official test score: IELTS 5, TOEIC 600, TOEFL 50, Duolingo 80

- **Duration:** 4 week full-time available on request

This program equips students with vocabulary and communication skills necessary for anyone interested in pursuing further studies in IT. Take a deeper look into a broad range of practical topics, such as analytics, algorithms, innovation, AI and product design. Test your knowledge with weekly presentations and quizzes.

SPECIALIZED PROGRAMS

CACCT (COMMUNICATION FOR AIRLINE CABIN CREW TRAINING)



- **Entry Requirement:**

Completion of GROW A2+ or an official test score: IELTS 4.5, TOEIC 550, TOEFL 45, Duolingo 65

- **Duration:** 2 to 16 weeks

CACCT - Communication For Airline Cabin Crew Training emphasizes the specific use of English language in the airline industry and is designed to prepare the students for future employment as a flight attendant. Upon completing either the in-person/hybrid or online program, students will have the communication skills necessary to land a job as cabin crew on an airline



ENGLISH 4 WORK



- **Entry Requirement:** Pre-intermediate level recommended

- **Program options:**

Medical English, English for Hotels, English for IT, English for Accounting, English for Office

Language skills matter! Get quality training for your professional goals. The online classes are designed for you to explore subjects you're passionate about, with the opportunity to earn a canadian certificate. With an integrated certification program, students can access our modules online from any device with an internet connection.

TEST PREPARATION

IELTS

- **Entry Requirement:**

Completion of GROW A2+ or an official test score: IELTS 4.5, TOEIC 550, TOEFL 45, Duolingo 65

- **Duration:** 4, 8, or 12 weeks, full-time



SSLC offers IELTS classes for students wishing to take this internationally recognised exam, or students who simply want a more academic program to improve their English abilities. This intensive class prepares students for success, with real IELTS practice exams and individual student feedback.



TOEIC®

- **Entry Requirement:**

Completion of GROW A2 or an official test score: IELTS 4, TOEIC 400, TOEFL 21, Duolingo 40

- **Duration:** Up to 16 weeks from 9am - 12pm (15 hours)



Focus on developing reading, writing, listening and speaking skills in relation to the TOEIC test. Learn essential test-taking strategies, common tips and tricks that will help increase your TOEIC score, vocabulary building, especially of words that are commonly found on the TOEIC test. Complete weekly mock tests authorized by ETS that assess and enhance language skills. Take our official in house TOEIC test once a month to track progress.

SSLC Vancouver and Toronto are official TOEIC® test centers!

SEASONAL PROGRAMS

ECF (ENGLISH FOR CHILDREN AND FAMILY)



- 6-12 years old

Children study with TESOL Canada qualified instructors, using materials from a Canadian curriculum. Learning is enhanced with weekly themes and outings, and children are immersed in an English environment. Parents study in the same building, or just steps away in Vancouver or Toronto. Summer and Winter dates are available.

Sample Weekly Schedule

	MONDAY	TUESDAY	WEDNESDAY	THURSDAY	FRIDAY
9:00 - 10:00	Grammar	Reading Comprehension	Grammar	Reading Comprehension	Weekly Review
10:15-10:55	Vocabulary/ Spelling	Writing focus	Vocabulary/Phonics	Writing focus	Grammar/ Spelling
11:10-11:30	Interactive Learning	Interactive Learning	Interactive Learning	Interactive Learning	Tests/ Quizzes
11:30 - 12:00	Listening & Speaking	Course book	Listening & Speaking	Course book	Listening & Speaking
12:00-1:00	- Lunch Break - Mandatory Lunch Supervision by SSLC				
1:00-1:20	Literature/Language Arts	Literature/Language Arts	Field trip or Activity	Literature/Language Arts	Literature/Language Arts
1:20-1:45	Weekly Academic theme Introduction & Vocabulary	Academic Theme (Writing)		Academic Theme (Listening)	Theme Review/ Quiz
2:00 - 3:00	Theme Development	Art or Science (Theme)		Academic Theme Projects	Project Presentations

Sample Weekly Themes



CANADA • SCIENCE AND TECHNOLOGY • SPORTS • HOBBIES • SPACE • ANIMALS AND NATURE • FOOD • TRANSPORTATION • MOVIES



SEASONAL PROGRAMS

GL (GLOBAL LEADERS SUMMER CAMP)



- Youth 9-12 years old | Teens 13-17 years old | 2-5 weeks.

Don't miss out on this amazing experience. Join students from all over the world and enhance your English skills while learning about the **UN's Sustainable Development Goals (SDGs)**. Every day of camp is packed with academic activities, field trips, and loads of fun activities within the greater Vancouver area and beyond. Join us at the University of British Columbia (UBC) for the experience of a lifetime!

NEW!
Optional Rocky Mountains Tour
4 days / 3 nights

Sample Week Schedule

	SUNDAY	MONDAY	TUESDAY	WEDNESDAY	THURSDAY	FRIDAY	SATURDAY
	New Students Check-In	WEEK 1 - SUSTAINABLE CITIES AND COMMUNITIES					Students Check-out
AM		English through SDG	English through SDG	English through SDG	English through SDG	SDG Presentations	
PM1	Victoria Trip	Orientation & Campus Tour	Kayaking/Paddling	SDG Activity	Scavenger Hunt	SDG Activity	Outlet Shopping
PM2		SDG Activity		Free Time			
EVE	Meet Your New Friends	Evening Activity	Evening Activity	Evening Activity	Evening Activity	Welcome BBQ/ Graduation Party	Weekly Social

SDG Goals



SUSTAINABLE CITIES & COMMUNITIES



LIFE ON LAND



NO POVERTY



QUALITY EDUCATION



GOOD HEALTH & WELL-BEING



VACATION PROGRAMS



Visit our website for more information!

Good Time Summer/Winter

• Teens 14-17

General ESL + daily group activities

Good Time Summer/Winter program offers a great opportunity for students to experience a cultural adventure while enhancing their English skills and providing the chance to make new friends.

• VANCOUVER, TORONTO, VICTORIA



English for Real Life

• Teens 14-17

Communication skills for beginner level students. Learn practical language for everyday life, and take what you learn into the real world - thus special program provides weekly outings during class time to practice skills.

• VANCOUVER, TORONTO, VICTORIA

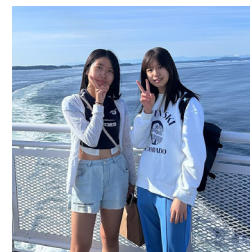


Active Communication

• Teens 14-17

English communication skills for pre-intermediate to intermediate level students. Student practice presentation skills, study skills, and prepare for education in Canada.

• VANCOUVER, VICTORIA



FREE CLASSES



Want more English?

Enhance your English prowess with our extra classes! Elevate your language skills, boost confidence, and unlock new opportunities. Join us for an engaging and enriching learning experience. Let's excel together! *Extra classes vary by campus.*



ENGLISH LOUNGE

English Lounge is an after school class to practice your fluency. Lots of interesting conversations, and feedback is available. Students are able to learn idioms, slang and everyday phrases in an intimate, friendly environment.



EVERYDAY ENGLISH

Join classmates for an engaging hour practicing useful phrases and expressions in English. Get extra practice with language used for everyday tasks like shopping, asking questions, inviting friends, and more!



RESUME CLINIC

This class focuses on helping students to prepare their resume to apply for jobs in Canada. Students should come to the class with a resume or CV to help the teacher.



EXTRA GRAMMAR

Extra Grammar class will give an overview of a different grammar point each week. For example it may focus on only prepositions, or a specific grammar tense. Students get a chance to get extra grammar with a variety of different topics.



IDIOMS AND SLANG

No cap, this class is LIT! This class focuses on colloquial English and improving fluency. It teaches a wide variety of modern English that students would not usually learn in the classroom.



VOCABULARY GAMES

Have fun with vocabulary! Learn new words and phrases commonly used in everyday English through a variety of interactive games and activities. This is for students who want to expand their vocabulary in an engaging setting.





MORE INFO



ACTIVITIES

One of the benefits of studying with SSLC is the value added through the many exciting, entertaining and cultural activities we offer. Your campus activity coordinators along with our partner companies, West Trek (Vancouver) and ISX (Toronto), plan a variety of activities and sightseeing tours for you to participate in. Monthly activity calendars are available at each campus. With so many choices, your life in Canada will be filled with exciting memories and opportunities as you further develop your English skills outside of the classroom.



ACCOMMODATION



GEC Student Residences

Available in greater Vancouver, GEC offers locations with shared and private rooms. Remove the uncertainty of finding flexible accommodation in a foreign country. Fully-furnished accommodations all located under 30 minutes from downtown Vancouver. Rent includes: electricity, water, Wi-Fi..



ACCOMMODATION



Homestay

Whether you're staying in Vancouver, Victoria, or Toronto, SSLC works with hundreds of homestay families to provide safe, transit-accessible accommodation for students. Our homestay families meet rigorous standards and are in regular communication with SSLC. *Toronto student residences available upon request.*

Disclaimer: The images shown are for illustration purposes only and may not be an exact representation of the homestay.





IMMIGRATION CONSULTANT

Need help with your status in Canada?

Our in-house Regulated Canadian Immigration Consultant will be happy to assist you!



SSLC Vancouver - 2nd floor, 549 Howe St.

HOW TO APPLY?

MORE INFO



Follow the steps below and start your learning journey now!

1

Choose your program

- Not sure about your level? Try our free english test! Pick the program that works for you! General ESL, Vacation, or Specialized Programs - we have something for everyone.



2

Complete the SSLC Application form

- Fill out our online Application Form and let us know a little more about you! An advisor will contact you with detailed program requirements.



3

Receive your Letter of Acceptance

- We'll send you all the documents you need for the next step, and ask you to take our Placement Test..



4

Apply for your Visa + Medical Insurance

- Complete the Visa application process if it is required, and purchase medical insurance for the duration of your stay. You may not need a study permit if you are studying for fewer than 6 months*.



5

Pack your bags and start your journey!

- Our advisors are always happy to help and answer questions about Canada, the application process, and programs. We can't wait to meet you!



*Visit www.cic.gc.ca for more information about current visa and permit requirements.

Check our website for the latest information: www.studysslc.com



SPROTT SHAW LANGUAGE COLLEGE

VANCOUVER

2nd floor, 549 Howe St.
Vancouver, BC
Canada, V6C 2C2
☎ (604) 678-8148

VICTORIA

#103-31 Bastion Square
Victoria, BC
Canada, V8W 1J1
☎ (250) 383-5464

TORONTO

4th floor 120 Eglinton Ave E
Toronto, ON
Canada, M4P 1E2
☎ (416) 486-6561

✉ info@studyslcl.com
🌐 studyslcl.com

📘 facebook.com/studyslcl
📷 instagram.com/studyslcl