



HOFSTRA  
UNIVERSITY®

# NEW YORK'S MOST CAREER-INTENSIVE UNIVERSITY

Guide for international students  
2025-2026

INTO<sup>®</sup>  
HOFSTRA  
UNIVERSITY





# WHY CHOOSE HOFSTRA UNIVERSITY?

## New York City:

#1

Best City  
in the World

*Time Out 2024*

Top 15

Best Cities  
for Young  
Professionals  
in America

*Niche.com 2024*



What's it like to study near New York City?  
Scan to find out.

## FAST FACTS

Founded: **1935**

Campus: **Long Island, New York**

Campus size: **244 acres**

Enrollment: **10,393 students**

International students: **6%**

Countries represented: **87**

Bachelor's: **175**

Master's and PhD: **200**





# #40

Best Undergraduate  
Engineering Programs

U.S. News & World Report 2024

# #1

New York School for  
International Business (Graduate)

College Factual 2024



**29** undergraduate  
STEM degrees

**19** graduate  
STEM degrees

**MBA  
STEM** in all  
concentrations



## TOP 10

Most Popular  
Master's Degree  
Colleges for Finance

College Factual 2023

**93%** of Hofstra degree  
recipients are employed, attending  
graduate school, or both

Undergraduate and Graduate Alumni Outcomes 2021-2022

The average undergraduate  
class size is **21** students

The student-faculty ratio is **13-to-1**







## Hofstra's career-driven curriculum



*"When I studied at Hofstra, it really helped me to increase my knowledge and experience. In my major, I luckily had an internship class, and I also got my internship experience during my master's degree. During my internship, I felt like it was a great opportunity for me to learn how to work in a practical working environment, but also to increase my experience on my résumé."*

### HALEY

Taiwan  
MA in Industrial/Organizational Psychology  
Participated in OPT as a Human Resource Coordinator



Watch Haley's story



## Preparing you for your career

- Interview with reporters who cover on-campus events of national interest, like the US presidential debates from three election cycles (2008, 2012 and 2016).
- Experience what your first job in engineering would be like with the co-op program, where you will complete a paid six-month experience.
- Work with top executives in each industry via Hofstra's faculty to build strong programs so you meet employment market needs.
- Gain the skill to write compelling content from Emmy Award-winning communications faculty.



# \$109,000

average starting salary with a Hofstra computer science graduate degree *Class of 2021-2022*

**100%**  
of Hofstra computer science  
master's degree recipients  
are employed

*Graduate Alumni Outcomes 2021-2022*

## Invest in your future

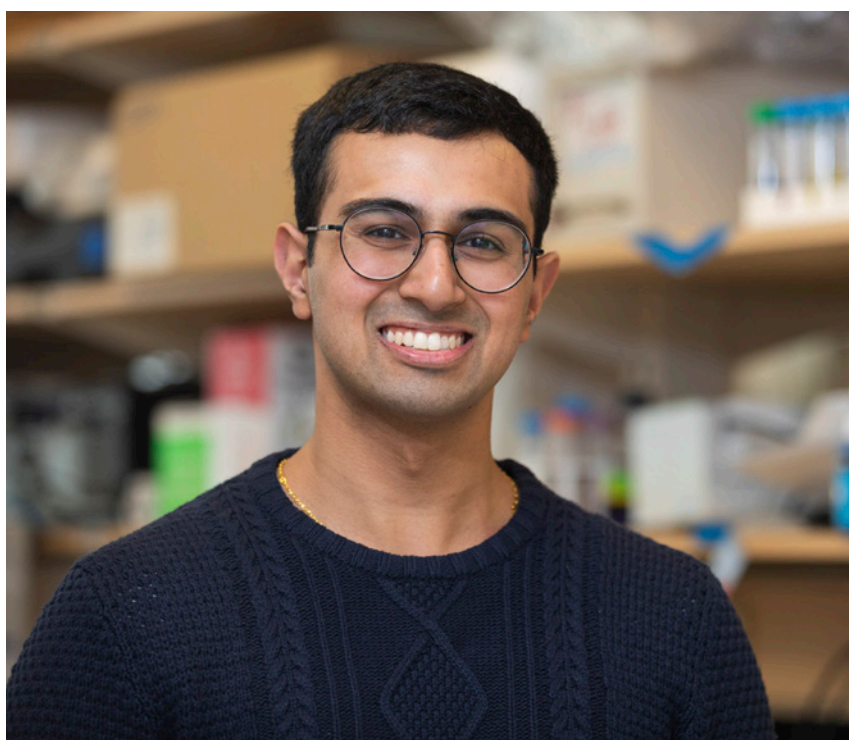
Hofstra students have interned at the following companies:

- ABC
- CBS
- Doctors Without Borders
- Goldman Sachs
- JPMorgan Chase & Co.
- KPMG
- NASA
- NBC
- PwC
- Sony
- Toyota
- Vogue Magazine
- The Walt Disney Company



## Employers of Hofstra alumni

- Amazon
- Boeing
- Capital One
- ESPN
- Facebook
- Google
- IBM Corp
- Marvel Entertainment
- Morgan Stanley
- Northwell Health
- T-Mobile
- United Nations
- Warner Bros. Records
- Wells Fargo





# CO-OP PROGRAMS

Opportunity through experiences

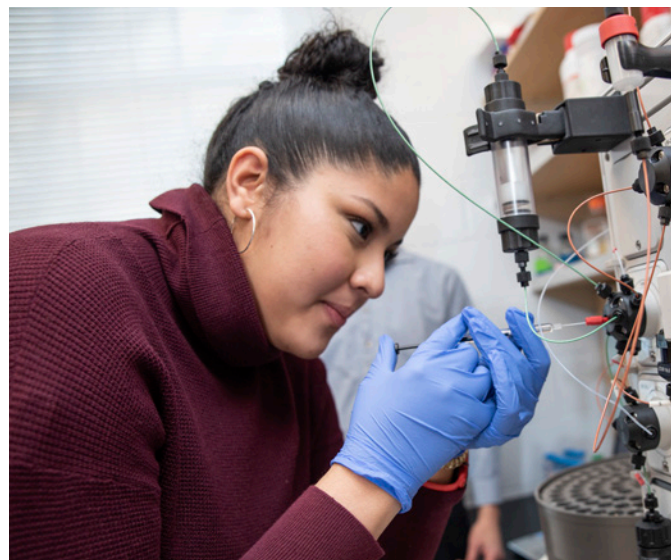


## Engineering and Computer Science

Full-time paid work experience lasting six to eight months

- Complete a paid co-op experience at industry-leading corporations in New York City, on Long Island or nationwide. Hofstra's paid co-op program is six to eight months in duration.
- Undergraduate engineering and computer science students can begin the full-time co-op program after the first semester of their junior year. The program is also available for graduate-level computer science students.
- The co-op program has 200+ corporate partners, including Canon, Estée Lauder, Gerber Technology, Google, GroupM, IBM, JFK Airport, Stantec, UPS, Veeco and Zebra.

**\$20-40K** estimated earnings  
for students completing a full-time paid co-op.



More than **80%** of the students who have graduated from the program have received job offers from their co-op companies.



Scan to learn more about  
Hofstra's MBA Co-op



## MBA

Full-time paid work experience  
for three to five months

- Complete a paid co-op experience with leading corporations in New York City and on Long Island. The program is three to five months in duration.
- MBA corporate partners include CBS, Comedy Central, The Madison Square Garden Company, Northwell Health, Paramount, Peloton, PwC and Pharma Corp.

**\$15-20K** estimated earnings  
for students completing a full-time paid co-op.

About **70%** of students land a full-time job with their co-op partner or with a competitor in that field.

*"The Core Skills Lab and other learning facilities on campus are great and have helped me a lot in my studies. The technology and software that we use enhances my core skills, including communication, teamwork, initiative, adaptability and reasoning. The School of Business has several centers and facilities, such as the trading room, which have the latest software and are available for students to use throughout our studies."*

**NIMAY**

India  
MS in Business Analytics



WATCH  
NIMAY'S  
STORY



## State-of-the-art facilities

The **Science and Innovation Center** boasts brand new labs focused on big data, robotics, computer architecture, UNIX systems and graphics, virtual reality and other computer science-related fields. The center also boasts a large makerspace to facilitate student prototyping and the first-year engineering lab experience.

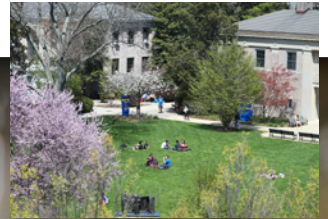


The Department of Computer Science includes laboratories like:

- Big Data Lab
- Cybersecurity Lab
- Gaming and Graphics Lab
- Research and Innovation Lab
- Systems, Networking and Security Lab



## Live the campus life



### MICHAEL

China  
MBA in Marketing



***"I really enjoy Hofstra because it's a huge, diverse campus where you can connect with different people. At the same time, the school helps students with finding internships and jobs, and there's so many clubs to choose from."***



Watch  
Michael's  
story

### LUISA

Brazil  
BA in Film Studies and Production



***"Being close to New York City is an advantage for Hofstra students because we have more career opportunities. For both internships and work experience, we get to work for big companies and get real experience in the field you're interested in."***



Watch  
Luisa's  
story

**By living right outside of New York City's hustle and bustle,** you can focus on your studies in a welcoming and cozy atmosphere. With 500+ on-campus events per year and 21 NCAA Division I teams, you'll find plenty of entertainment here. Easily walk to your classes and live in affordable on-campus housing. Explore a diverse community near spectacular beaches, historic landmarks and popular New York City neighborhoods like Brooklyn and Queens.

### Things to do on Long Island, New York

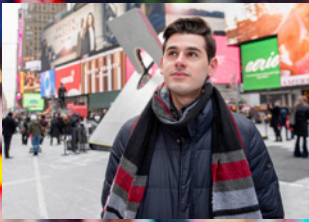
- Enjoy the beaches from Long Beach to the Hamptons.
- Explore the 300-year-old Sunken Forest in Fire Island, which features an untouched forest and a wide open beach.
- Visit the town where Jackson Pollock studied and museums like the Nassau County Museum of Art and the Parrish Art Museum in Water Mill.
- Eat freshly caught, local seafood on Shelter Island.
- Go shopping at the Roosevelt Field Mall, the largest indoor shopping mall on Long Island.

### Distances from Hofstra University

- Jones Beach State Park - 16 km
- John F. Kennedy International Airport - 20 km
- Long Beach - 25 km
- LaGuardia Airport - 33 km
- Times Square - 45 km
- The Hamptons - 117 km



## Experience the city lights



### Places to go in New York City

- A.** Take a walk through Central Park. It's a famous backdrop for American movies with scenic trails, bike paths, concert venues and much more.
- B.** Go to the top of the Empire State Building and the rooftop deck of 30 Rock for views of the city.
- C.** Visit New York City's vibrant Chinatown, a rich cultural experience filled with delicious cuisine, bustling markets and a tapestry of traditions.
- D.** Explore the sights and flavors of New York City's India Street, where you can find authentic cuisines, discover unique shops and embrace Indian culture.
- E.** Watch a baseball game with the Yankees or Mets and a basketball game with the Knicks or Nets. If you're looking for something new, you can catch an American football game with the Jets or Giants.
- F.** Channel your artistic side at MoMA (Museum of Modern Art) and The Met (The Metropolitan Museum of Art) in Manhattan.

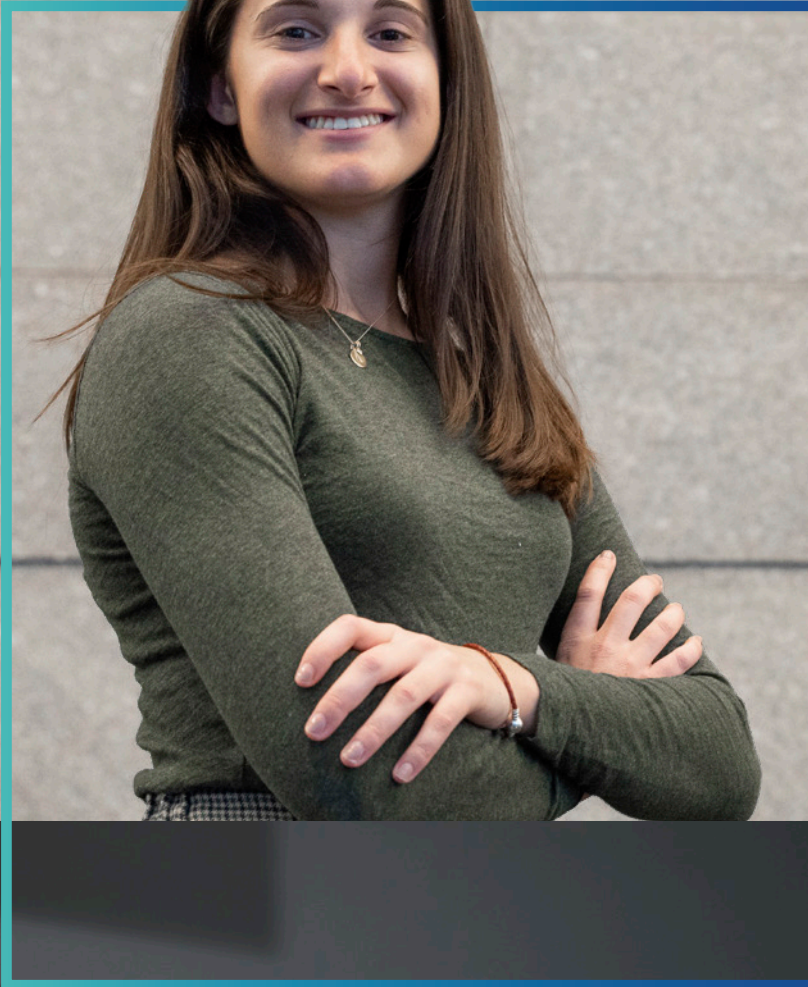
### Start your career in the big city

The state of New York has the most Fortune 500 company headquarters in the US (more than 50). You could start your career at one of the following headquarters:

American Express	Goldman Sachs Group	S&P Global
Estée Lauder	Nasdaq	Tiffany & Co.
E*Trade Financial	Pfizer	Viacom
Foot Locker	Ralph Lauren	Warner Bros. Records



# CAREER-INTENSIVE PROGRAMS





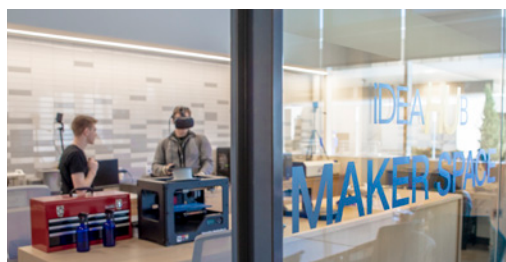
## The Frank G. Zarb School of Business

### Get to work with America's business leaders

- **The Leo A. Guthart Hall for Innovation and Discovery:** The Frank G. Zarb School of Business boasts a 52,000-square-foot building.
- **Behavioral Science and Market Research Lab:** Study and research consumers' physical and physiological behavior with the latest technology to analyze their engagement process with a brand or a product.
- **Hofstra Digital Remedy Venture Challenge:** This annual entrepreneurship competition gives you the opportunity to create and pitch your own business plan.
- **The Core Skills Lab:** A dedicated space where learners can enhance their core skills, including communication, team work, adaptability and reasoning. Resources include a VR room, computer workstations and cutting-edge communication tools.

### Bring your ideas to life

- **Institute of Innovation and Entrepreneurship ideaHUB:** Share your ideas at this business incubator, where you can collaborate with startup companies.
- **Student Managed Investment Fund:** Gain the same experiences as portfolio managers and security analysts by managing an investment pool of real money.
- **The Martin B. Greenberg Trading Room:** One of the largest academic trading rooms in the nation, identical to those used by leading financial institutions and equipped with 34 Bloomberg Professional terminals.



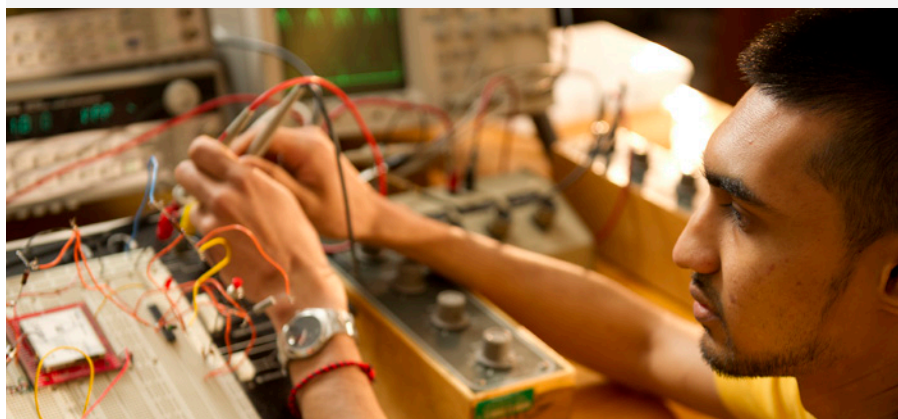
## The Fred DeMatteis School of Engineering and Applied Science

### Real tech experience for the real world

- **ASPiRe (Advanced Summer Program in Research):** Participate in a 10-week summer intensive program for students interested in pursuing a research project with faculty related to their major.
- **Center for Innovation:** Companies consult the Center for Innovation at Hofstra when they need help solving a technical or practical engineering problem.
- **Entrepreneurship in computing:** The Leadership and Innovation concentration is available to computer science students where you learn to identify innovative and entrepreneurial opportunities in computing. You will have a 10- to 13-week internship monitored by entrepreneurs with a local startup company.

### Computer Science and Cybersecurity

- **Learn how to best design, manage and secure computer networks** so you can help businesses and organizations protect digital information.
- **Graduates are well-prepared to fill the growing number of jobs** as information security officers, penetration testers, forensics analysts, malware analysts, network administrators and more.



**Northwell partnership:** Hofstra University has partnered with Northwell Health, New York state's largest healthcare provider and private employer, to establish and operate the Donald and Barbara Zucker School of Medicine at Hofstra/Northwell.

## School of Health Sciences

- **Health Administration:** Develop and strengthen your communication and leadership skills to manage health services effectively and maximize the health status of diverse populations.
- **Health Informatics (STEM):** Develop information systems to manage patient healthcare information or help doctors create treatment plans.
- **Public Health:** Conduct scientific research or promote and protect the health of the community through education.





# Academic programs

**Find your degree.** With a wide range of subject areas and admissions options, you can find the perfect degree for your chosen career. You can choose to apply for direct entry to the university or for a Pathway program that provides extra academic, language and cultural support. From the day you apply to the day you graduate, we are here to help you succeed every step of the way. Flip to the back cover to learn how to apply.

**B = Bachelor's**

**M = Master's**

**GP = Graduate Pathway/Integrated Master's Program that can lead to this degree is indicated in orange. This degree is also available through direct admission.**

- This Hofstra University degree program is available through direct entry.
- ▶ Designated STEM degree by the U.S. Department of Homeland Security.
- <sup>1</sup> STEM is not available for all concentrations
- \* Dual Bachelor's/Master's available

	B	M
<b>HOFSTRA COLLEGE OF LIBERAL ARTS AND SCIENCES</b>		
Africana Studies	GE	
Anthropology [BA options: Anthropology; Archaeology]	GE	
▶ Applied Physics [BS options: Biochemistry; Computer Science; Engineering]	GE	
Art	GE	
Art History	GE	
Asian Studies	GE	
▶ Biochemistry	NS	
▶ Biology [BA/BS options: Cell and Molecular Biology; Ecology and Evolution; Marine Biology; Pre-Allied Medical Professions; Pre-Medical, Pre-Dental and Pre-Veterinary Studies] [MA options: Marine and Freshwater Biology; Cell and Molecular Biology]	●	●
▶ Chemistry	NS	
Chinese	GE	
Comparative Literature and Languages	GE	
Criminology	GE	
Dance	FP	
Drama	FP	
Early Childhood and Childhood Education	GE	●
▶ Economics* [BS options: Business Economics; Mathematical Business Economics] [BA options: Economics; Mathematical Economics] <sup>1</sup>	GE	
Educational Leadership: K-12 and Higher Education		●
English [BA options: English; Children's and Young Adult Literature; Creative Writing and Literature; Literatures in English; Publishing Studies and Literature]	GE	
Educational Technology		●
▶ Environmental Resources	NS	
Fine Arts [BS/BA options: Design, Painting] [BS options: Design New Media and Industrial Design; Sculpture; Art History; Fine Art] [BA options: Sculpture-Industrial Design]	FP	
▶ Forensic Science	GE	
French and Francophone Studies	GE	
▶ Geographic Information Systems	GE	
Geography [BA options: Geography; Geographic Information Systems]	GE	
▶ Geology	NS	

## International Year One

Indicates the International Year One program that should be taken to progress to an undergraduate academic program. This program is also available through direct admission.

<b>BU Business</b>	<b>EN Engineering</b>	<b>HE Health Science/Exercise Science</b>
<b>CO Communication</b>	<b>GE General</b>	<b>NS Natural Science</b>
<b>CS Computer Science</b>		

## International Direct

All bachelor degree programs are available for direct admission or International Direct.

	B	M
German	GE	
Global Studies	GE	
Health and Physical Education		●
History	GE	
Italian Studies	GE	
Japanese	GE	
Jewish Studies	GE	
Labor Studies*	GE	
Languages Other Than English and TESOL		GP
Latin American and Caribbean Studies	GE	
▶ Linguistics* <sup>1</sup> [MA option: Forensic Linguistics]	GE	●
Literacy Studies [MA options: Literacy Studies (Birth-Grade 6) or (Grades 5-12)]		GP
▶ Mathematical Finance	GE	
▶ Mathematics* [BS options: Computer Science; Mathematics; Actuarial Science; Applied Mathematics; Chemistry; Engineering; Physics] [BA option: Mathematics]	GE	
▶ Medical Physics		●
Music [BA option: Music] [BS options: History/Literature; Jazz and Commercial Music; Music Business; Performance; Theory/Composition]	FP	
▶ Neuroscience	NS	
Philosophy	GE	
Physical Education	HE	
▶ Physics	NS	
Political Science	GE	
Pre-Health (Pre-Medical) Studies [Popular majors include: Biology; Biochemistry; Exercise Physiology; Health Science; Neuroscience; Psychology] [BS in Pre-Medical Studies] [BA in Pre-Medical or Pre-Health Studies with a Concentration in the Humanities or Social Sciences, including: Anthropology; Classics; Geography; Global Studies; Philosophy; Religion; Speech-Language-Hearing Sciences]	NS	
Psychology*	GE	
Public Policy and Public Service	GE	
Rhetoric and Public Advocacy [BA options: Health Communication; Political Communication]	GE	
Russian and Post-Soviet Studies	GE	



	B	M
Secondary Education [BSEd options: Dance Education; Fine Arts Education; Music Education] [BA options: English Education; French; German; Italian; Russian; Spanish; Mathematics; Biology; Chemistry; Earth Science; Physics; Social Studies] [MSEd options: English; Mathematics; Biology; Chemistry; Earth Science; Physics; Social Studies]	GE	●
Special Education [MSEd options: Secondary Special Education Generalist; Students with Disabilities Generalist with Extensions in Secondary Education]		●
Sociology	GE	
Spanish	GE	
Special Education and Early Childhood (birth-grade 2) Education (Inclusive)		●
Special Education and Elementary (grades 1-6) Education (Inclusive)		●
Special Education and Secondary (grades 7-12) Education (Inclusive)		●
STEM	GE	
► Sustainability		GP
► Sustainability Studies	GE	
Theater Arts	FP	
► Urban Ecology <sup>1</sup>		●
Women's Studies	GE	

### SCHOOL OF HEALTH SCIENCES

Creative Arts Therapy Counseling		GP
Exercise Physiology	HE	
Health Administration		GP
► Health Informatics		GP
Health Professions Education		●
Health Science	HE	
Marriage and Family Therapy		●
► Mental Health Counseling		●
Public Health		GP
Rehabilitation Counseling		●
Rehabilitation Counseling in Mental Health		●
School Counseling		●
Speech-Language Pathology		●
Sports Science [MS options: Exercise Physiology; Strength and Conditioning]		GP

### FRANK G. ZARB SCHOOL OF BUSINESS

► Business Administration/MBA [MBA Options: Business Analytics; Business Operations and Healthcare Analytics; Cybersecurity Management and Policy; Finance; International Business; Management; Marketing; Sports & Entertainment Management; Strategic Healthcare Management]		GP
► Business Analytics	BU	GP
Business Operations and Healthcare Analytics		GP
Entrepreneurship*	BU	
► Finance* <sup>1</sup> [MS options: Financial and Risk Management; Investment Analysis]	BU	GP
Information Systems	BU	
International Business*	BU	
Management*	BU	
Marketing*	BU	GP

	B	M
Sports Management	BU	
Supply Chain Management*	BU	

### THE LAWRENCE HERBERT SCHOOL OF COMMUNICATION

Audio/Radio Production and Studies	CO	
Film Studies and Production	CO	
Filmmaking	CO	
Journalism* <sup>2</sup> [BA options: Journalism; Sports Media]	CO	●
Mass Media Studies [BA options: Media and Culture; Media, Law, and Policy; Urban and Suburban Communication]	CO	
Public Relations and Reputation Management	CO	GP
Podcasting and Audio Storytelling	CO	
Television Production and Studies	CO	
Sports Media	CO	
Video/Television	CO	
Video/Television and Business	CO	
Video/Television and Film	CO	
Writing for the Screen	CO	

### FRED DEMATTEIS SCHOOL OF ENGINEERING & APPLIED SCIENCE

► Bioengineering [BS options: Bioelectricity; Biomechanics; Premedicine]	EN	
► Civil Engineering [BS options: Structural; Environmental]	EN	
► Computer Engineering [BS options: Artificial Intelligence; Gaming and Graphics; Leadership and Innovation in Computing; Medical Engineering; Networking and Cybersecurity; Web and Mobile Engineering]	EN	
► Computer Science and Cybersecurity	EN	
► Computer Science* [BA/BS options: Artificial Intelligence; Gaming and Graphics; Leadership and Innovation in Computing; Networking and Cybersecurity; Web and Mobile Engineering] [MS options: Artificial Intelligence; Networking and Security; Web Engineering]	CS	GP
► Cybersecurity [MS options: Management and Policy; Technology]		GP
► Data Science		GP
► Electrical Engineering [BS options: Electrical Engineering; Computer Engineering]	EN	
► Engineering Management [MS options: Engineering Analytics; Leadership]		GP
► Engineering Science [BA options: Biomedical Engineering; Production and Manufacturing] [BE options: Chemistry; Environmental; Physics]	EN	
► Industrial Engineering	EN	
► Mechanical Engineering [BS options: Aerospace Engineering; Mechanical Engineering]	EN	

### MAURICE A. DEANE SCHOOL OF LAW

American Legal Studies [LLM options: Business Law, International Law]		●
Family Law		●
Health Law		●

<sup>2</sup> Graduate programs require a TOEFL 90 or IELTS 7.0.

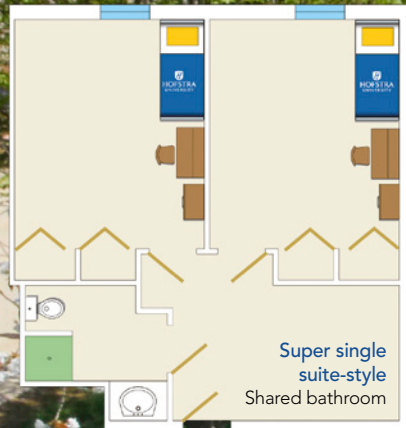
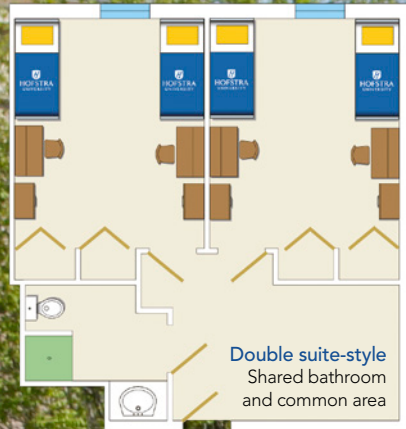


To learn more about our programs, please scan the QR code or visit [www.intostudy.com/en/universities/hofstra-university/programs](http://www.intostudy.com/en/universities/hofstra-university/programs)

For our complete program catalog, please visit [bulletin.hofstra.edu](http://bulletin.hofstra.edu)



# Housing and dining



## On-campus housing

- Hofstra guarantees housing for your entire academic career. You'll always have space here to learn and be part of the community.
- Get to know other international students and live just steps away from campus events, the gym, the campus nutritionist and student organizations.

## Dining at Hofstra

- Receive a standard dining plan if you choose to live on campus.
- Take your pick of 18 retail restaurant locations and a 24-hour dining service.
- Choose multicultural dining options available in the Student Center Cafe.

## Campus transportation

- The shuttle bus stops by the residence halls and the route covers over 10 stops on campus. It also goes to the train station that will take you to New York City.
- The shopping shuttle, including a stop at Roosevelt Field Mall, is available for students every Wednesday and weekend.
- From 9 pm to 5 am, the night shuttle runs through the surrounding neighborhoods and takes you to your residence hall.
- There is free parking available on campus for students.



## A WORTHWHILE INVESTMENT

**Hofstra University  
is in the top 14% for  
return on investment  
and best value**

*Payscale College ROI Report 2024*

## Estimated cost of attendance



Please scan the QR code for  
the most up-to-date tuition  
and scholarship information.





## INTO Hofstra University

134 Hofstra University  
100 Weller Hall  
Hempstead, NY 11549-1340  
USA

T: +1 516-463-6500  
E: [INTOHofstra@hofstra.edu](mailto:INTOHofstra@hofstra.edu)  
[www.intostudy.com/hofstra](http://www.intostudy.com/hofstra)

### Virtual campus tour

Take a campus tour from home with  
Hofstra's virtual tour at  
[www.youvisit.com/hofstra](http://www.youvisit.com/hofstra)

### Find us on:



[facebook.com/intohofstra](https://facebook.com/intohofstra)



[instagram.com/intohofstra](https://instagram.com/intohofstra)



[x.com/intohofstra](https://x.com/intohofstra)



[myin.to/HofstraYouTube](https://myin.to/HofstraYouTube)



WeChat



Youku

# HOW TO APPLY

Choose from two easy ways to apply

- 1 Apply via your local  
INTO educational counselor
- 2 Apply online  
Complete our online application form:  
[www.intostudy.com/apply-hofstra](http://www.intostudy.com/apply-hofstra)



Through innovative partnerships with leading universities, we  
expand opportunities for higher education, ensuring success and  
transforming the lives of our students and staff.

## Discover more online

For counselors:



For students:



Education counselor's stamp

Connect with us

