



Oregon State  
University

# THE WEST COAST'S *most* VALUABLE DEGREE

Guide for international  
students | 2025-2026



INTO<sup>®</sup>  
OREGON STATE  
UNIVERSITY



# The West Coast's MOST VALUABLE DEGREE

## CAREER OUTCOMES

**OSU GRADUATES EARN  
\$20,000  
MORE PER YEAR**  
than the average salary of  
graduates from other US higher  
education institutions

*U.S. Department of Education College  
Scorecard 2023*

## WEST COAST LOCATION

**540+**  
current students in OPT  
with 66% employed  
on the West Coast

*University Data 2023*

## RESEARCH AND INNOVATION



**NEARLY HALF A  
BILLION DOLLARS**  
in research funding every year

*University Data 2023*

## Welcome to OREGON STATE UNIVERSITY

where the world's biggest problems find their solutions. As a mid-priced, high-value university, Oregon State is an investment in your future with proven returns. No matter what you study, you'll end your time here having earned the West Coast's most valuable degree.



“

*As President of Oregon State University, I'm proud to lead an institution that is working to find solutions to some of the world's most challenging issues. As someone who came to the US for the first time as an international student, I am excited about what we can achieve together by bringing the most promising, committed and engaged international students to Oregon State University.*

**Dr. Jayathi Y Murthy**  
President of Oregon State University

”

## EVERY DEGREE TAUGHT WITH THE FUTURE IN MIND

AI and next-generation technology is changing the way the world works, and OSU graduates are ready for it. No matter what your major, our students are taught to take advantage of emerging opportunities, constantly upgrading their skill sets and preparing for the future of AI.

# \$2.4M

**additional lifetime earnings**

\* Earnings are estimated and not guaranteed. Actual pay depends on many factors like degree level, major and location (adjusted for inflation).

# TOP 20%

**BEST PAID GRADUATES IN THE US**

*PayScale Salary Report 2024*

## FAST FACTS

Founded: **1868**  
Main campus: **Corvallis, Oregon**  
City population: **59,000+**  
Campus size: **400 acres**  
Enrollment (Corvallis campus): **24,188**  
International students: **2,500+**  
Countries represented: **112**  
Bachelor's: **200+**  
Master's/PhD: **80+**  
Additional campuses:  
**OSU-Cascades (Bend, Oregon) &  
OSU Ecampus (online)**



## TOP 1.4%

**Global University**

*Center for World University Rankings 2024*

## #3

**Best University Solving  
Climate Change**

*successfulstudent.org 2022*

## #16

**Best Colleges for Environmental  
Science in America**

*Niche.com 2024*

## #38

**Most Innovative School  
in the US**

*U.S. News & World Report 2024*

## #69

**Best Undergraduate  
Engineering School**

*U.S. News & World Report 2024*

## #70

**Graduate Computer Science**

*U.S. News & World Report 2024*

## #91

**US University**

*Center for World University Ranking 2024*

**Listed in Best Fashion  
Schools in the US**

*Vogue 2024*



# OUR GRADS GO PLACES

Check out some of our alumni and where they're working now.  
You can explore more stories here:



**Daniel** | Brazil  
Industrial Engineering, Class of 2018

**Intel**

(Semiconductor technology company)

*"[My engineering background from Oregon State] opened up a lot of doors for me, and one of the doors that it opened was Intel."*



See Daniel's story



**Purnima** | India  
Industrial Engineering, Class of 2023

**Tesla**

(Electric vehicle manufacturer)

*"Tesla was always my dream company, and landing an internship there was a big deal for me."*



See Purnima's story



**Jen-Hsun Huang**  
Taiwan  
President and CEO of NVIDIA, OSU Alum

*"There's no question that [artificial] intelligence is the single most valuable resource that humanity knows. Its impact to every industry can be very profound. This is the best of times to go to school. I'm glad that you guys have chosen to come to Oregon State University which is at the epicenter of some of the most important areas of scientific breakthroughs."*

(Oregon State University AI Week 2024)



**Leo** | Taiwan  
Electrical and Computer Engineering, Class of 2020

**Expedia**

(Travel booking platform)



**Renee** | Kenya  
Electrical and Computer Engineering, Class of 2023

**Daimler Truck North America**

(Commercial vehicle manufacturer)



**Alisha** | Kazakhstan  
Civil Engineering, Class of 2022

**WSP**

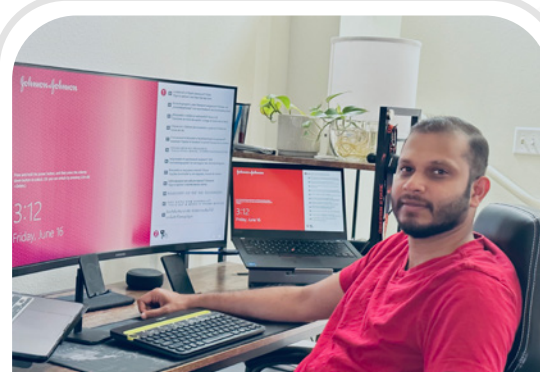
(Engineering firm)



**Jeen** | Thailand  
Mechanical Engineering, Class of 2023

**Daimler Truck North America**

(Commercial vehicle manufacturer)



**Sreesh** | India  
Business, Class of 2023

**Johnson & Johnson**

(Global healthcare company)



**Vania** | Indonesia  
Chemical Engineering, Class of 2021

**BillionToOne**

(Biotechnology company)



# West Coast CONNECTIONS

From Silicon Valley to Seattle, the West Coast is home to some of the world's most successful and impactful companies. Located in the heartland of US innovation, we have close ties to industries both on the West Coast and throughout the country.

**NVIDIA, Intel, Amazon, Apple, Google, HP, Meta, Microsoft, Nike and Tesla** were all founded on the West Coast – and all recruit directly from Oregon State.

Portland and Seattle are both ranked in the **top 20** best places to start a career.

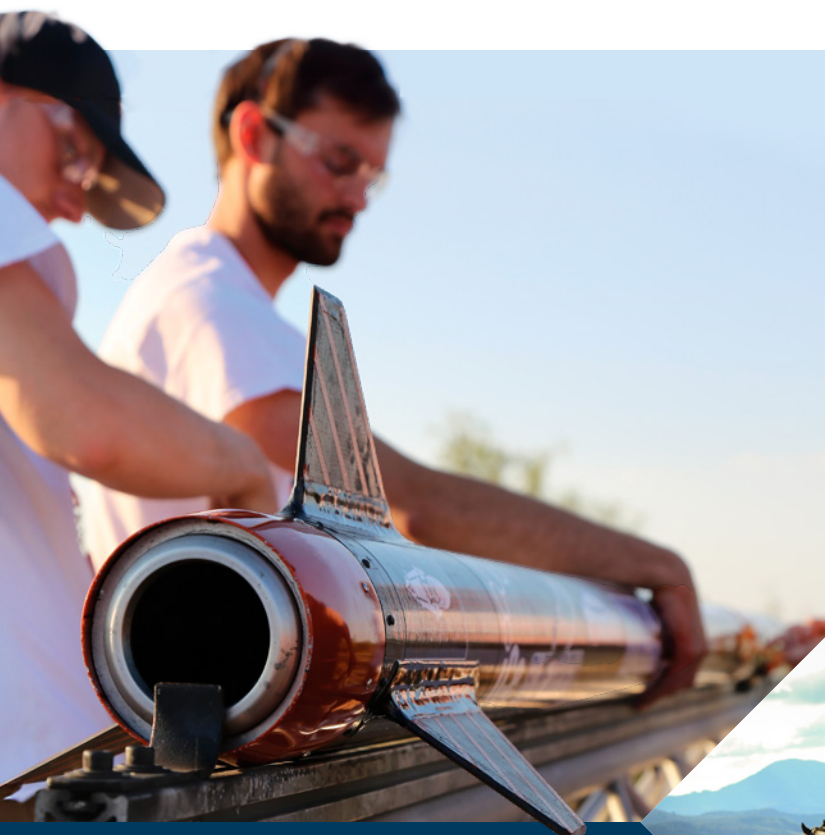
*WalletHub 2023*

The San Francisco Bay Area is the US' **fastest-growing city**.

*Kenan Institute of Private Enterprise 2022*

**7 of the 10 most sustainable cities** in the US are on the West Coast.

*Rocket Homes 2023*



## Internships DRIVEN BY INDUSTRY

We partner with companies to give students hands-on experiences that translate into job offers and impressive career outcomes. With hundreds of company partners, students can find internships for all of our programs.



Earn up to  
**\$50,000**

through internships with our corporate partners



Gain a year of work experience before graduating from Oregon State



# Experience OREGON

## Corvallis, Oregon

### SAFE

Ranked as one of the safest cities in Oregon in 2023 by *Travel Safe - Abroad*, Corvallis is a vibrant university town built to support students. Corvallis also enjoys a moderate climate with comfortable weather.

### SMART

According to *24/7 Wall Street* 2022, Corvallis is the third most educated city in the US, making it a great place to start a business or launch your career.

### GREEN

Whether it's the free public transportation, abundance of bike paths or focus on renewable energy, Corvallis cares about the environment and is playing its role in reducing its carbon footprint.

### Travel times by car from Corvallis

- 45 minutes to the Pacific Ocean
- 90 minutes to Portland
- 5 minutes to HP Research Campus



## OSU-Cascades campus

Our second physical campus is located in Bend, Oregon, a nationally recognized technology and recreation hub for the US. The campus offers over 30 undergraduate degrees, minors and other options, including two campus-specific majors and specialized internship opportunities.



## OREGON FAST FACTS

- No sales tax
- Filled with mountains, hiking trails, forests and rivers
- Home to the "Silicon Forest," a major hub of hundreds of high-tech companies
- **#2** Best College Towns in America  
*Best Colleges 2023*
- **#4** Greenest State in the US  
*ConsumerAffairs 2024*



# The West Coast's most valuable UNDERGRADUATE DEGREE

## Experiences that stand out

**As an international student**, you'll receive one-on-one support from the moment you apply through graduation and beyond

## An investment you can count on

- First-year retention rate of 95% for international students, 30 points higher than the average for US universities
- Average GPA of 3.4 for undergraduate first-year students
- Up to 22 credits applicable toward a master's program

## Admissions made easy

- Streamlined application (grades and an English test) for all programs and scholarships
- Application to offer in four days or less
- 24/7 support from center and global staff for applications, housing, arrival and post-arrival inquiries

## VIP support (with no additional cost) from start to finish

- Priority registration for classes
- Individual, customized support from advisors and professors
- Tutoring tailored to international students
- Airport pickup and visa support

## Honors College

Our Honors College is an opportunity for outstanding students to earn our most prestigious undergraduate degree, the Honors Baccalaureate degree. All international students admitted to the Honors College will be awarded a scholarship. Over the four years, students prepare for and conduct an Honors College thesis supervised by a faculty member. During their time at Oregon State, Honors College students have access to:

- 350+ additional course options
- unique honors classes, typically 25 students or less
- exclusive student spaces and support
- Honors College advising and mentorship

*"The multitude of opportunities, such as internships, study abroad programs, and undergraduate research projects [available in the Honor's College] lured me in, pulling me towards a path that promoted my growth as a student and as an individual."*

**Varsha**  
India  
BS in Biology

## Research with real results

As an undergraduate student, you'll have the opportunity to participate in major research projects addressing real-world problems working alongside professors and other leaders in their field.

Mei, a Japanese undergraduate business analytics student, participated in a joint study, analyzing pharmaceutical companies' data alongside supply chain management experts. This hands-on research provided Mei with valuable firsthand experience in her field.

*"I think there are a lot of benefits to engaging in research while we're undergraduate students. First of all, you can deepen your knowledge of your field by being exposed to real-life research situations, and you will be able to expand your insights for your postgraduate career and the rest of your college life."*

**Mei**  
Japan  
BS in Business Analytics

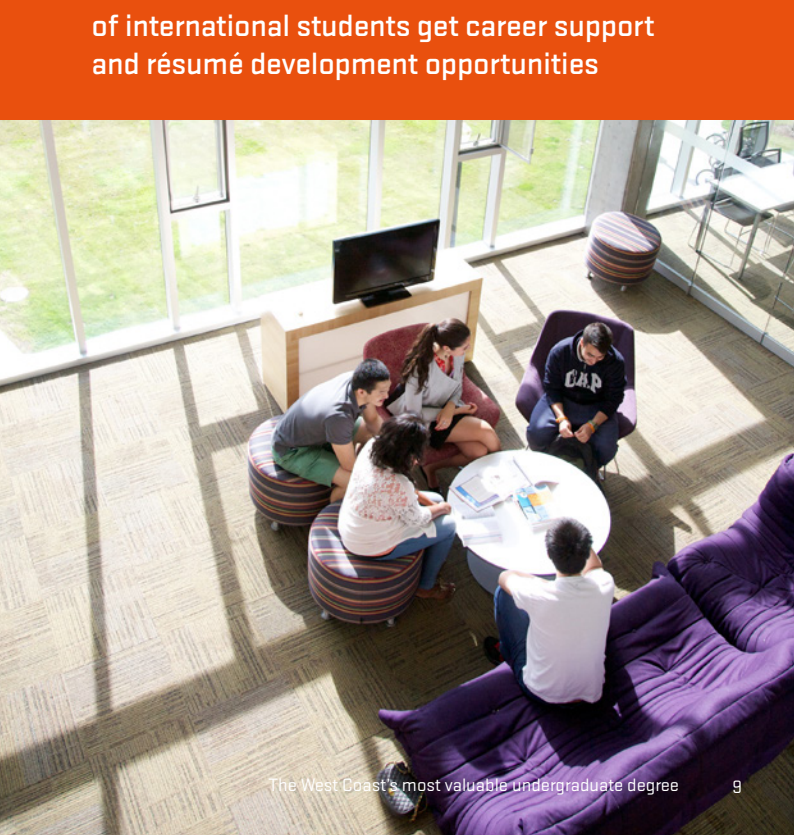
## Every business student becomes a business owner

All undergraduate business majors participate in the First-Year Experience, where the university provides you the financing to start and run your own business. This gives you the chance to make real-world decisions about marketing, finances, administration and product design. These experiences are critical in preparing for competitive jobs and internships.



# 100%

of international students get career support and résumé development opportunities

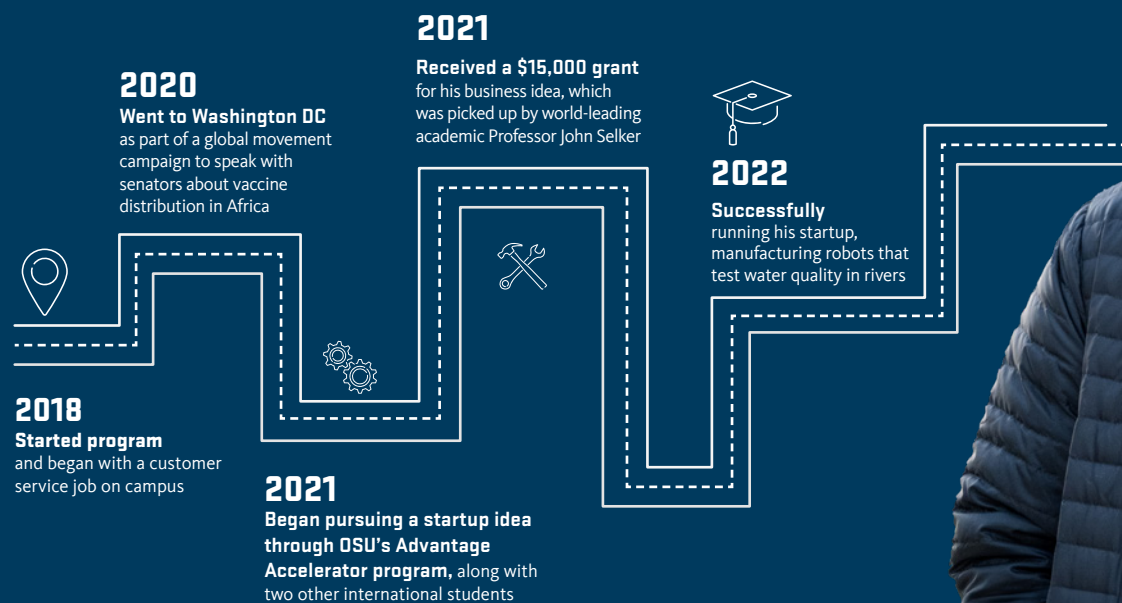




# STUDENT JOURNEY

**Nikhil, India and Kenya | Class of 2022**  
Mechanical and manufacturing engineering double major

"The facilities at OSU have helped me get hands on experience with a lot of machines such as lathes, mills, 3D printers and laser cutters. My involvement in the current job I have as a mechanical engineer has helped me develop the practical skills I learned in class."



## The West Coast's most valuable GRADUATE DEGREE

### GRADUATE PROGRAM SPOTLIGHTS

- Work with corporate partners to solve real-world problems.
- Develop global solutions at a Tier 1 research university.
- Receive academic and personal support designed for international students.
- Graduate in 1.5 years and land a job with top companies.



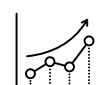
#### Engineering

- Over 10 fields all ranked in the **top 100** by U.S. News & World Report 2024.
- Complete a 1.5-year program and become eligible for three years of OPT.
- Network with companies through our MECOP internship program.



#### Computer Science

- **Top 100** Computer Science graduate programs in the US, according to U.S. News & World Report 2023.
- Specializations in AI, cybersecurity, data science, robotics and networking.
- Join the HP and OSU partnership and work with faculty to research technologies and materials.



#### Business Analytics

- **Our STEM-designated** business program qualifies for three years of OPT eligibility.
- You can study concentrations in finance, supply chain or marketing insights.
- Get involved in research with major industries through our Center for Business Analytics and Applied AI.



## Our signature areas OF RESEARCH

As a **Carnegie Tier 1 Research University** with nearly half a billion dollars invested in research each year, you'll find plenty of opportunities to participate in groundbreaking research in our state-of-the-art facilities.

We are one of only three universities in the US with **Land, Sea, Space and Sun Grant** designations, meaning notable research is conducted in all four areas.

### Artificial Intelligence and Robotics

Through a **\$50 million** donation from NVIDIA's Jen-Hsun Huang, we'll be among the few US universities to host AI systems locally on the third most powerful computer nationwide.

### Clean Energy Technology

Our fully functioning test site generates energy from waves and tides, a technology with the potential to cleanly power up to 2/3 of the US energy needs.

### Integrated Health and Biotechnology

Our researchers are studying human genomics, phytochemicals and innovative therapies to combat cancer, heart disease and diabetes.



### Climate Science and Sustainability


At the Human and Ecosystem Resiliency and Sustainability Lab, students and faculty advance, apply and facilitate global, national and regional research on sustainable and resilient human communities and ecosystems.



Academic programs

**Find your degree.** With a wide range of subject areas and admissions options, you can find the perfect degree for your chosen career. You can choose to apply for direct entry to the university or for a Pathway program that provides extra academic, language and cultural support. From the day you apply to the day you graduate, we are here to help you succeed every step of the way. Flip to the back cover to learn how to apply.

**B = Bachelor’s**     **M = Master’s**     **D = Doctorate**      Indicates degree programs also available at OSU-Cascades      Indicates an OSU degree program is available

**GP** Indicates a Graduate Pathway program can lead to this degree. This degree is available though direct admission.      Designated STEM degree by the U.S. Department of Homeland Security

**MID** Master’s International Direct provides customized support to direct entry students.

**International Year One**  
Indicates the undergraduate Pathway program that should be taken to progress to an undergraduate academic program. This program is also available through direct admission.

<b>AP</b> All Undergraduate Pathways	<b>EN</b> Engineering	<b>FO</b> Forestry	<b>PP</b> Public Policy
<b>BU</b> Business	<b>ES</b> Exercise and Sport Science	<b>GE</b> General	<b>PS</b> Psychology
<b>CS</b> Computer Science	<b>EV</b> Environmental Economics and Policy	<b>MA</b> Mathematics	<b>SC</b> Science
<b>DA</b> Design, Apparel and Merchandising Management	<b>FS</b> Food Science and Technology	<b>NR</b> Natural Resources and Renewable Materials	<b>WG</b> Women and Gender Studies

Direct routes

**Undergraduate degree**  
All first-year undergraduate students have customized support and enhanced student experience for first-year success.

**Master’s International Direct (MID)**  
Programs with the MID route have enhanced first-term support.

	B	M	D
College of Agricultural Sciences			
Agricultural and Food Business Management	SC		
Agricultural Sciences and Education		●	●
Agricultural Sciences	SC		
▶ <b>Animal Science(s)</b> [BS options: Animal Behavior, Animal BioHealth/Pre-Professional, Animal Production, Equine, Rangeland Science]	SC	●	●
Applied Economics		●	●
Biological Data Sciences [BS options: Computational Biology; Ecological and Environmental Informatics; Genomics]	SC		
▶ <b>Bioresource Research</b> [BS options: Animal Reproduction and Development; Applied Genetics; Bioproducts and Bioenergy; Biotechnology; Climate and Biosystems Modeling; Environmental Chemistry; Food Quality; Genomics/ Bioinformatics; Pest Biology and Management; Plant Growth and Development; Sustainable Ecosystems; Toxicology; Water Resources]		SC	
▶ <b>Botany</b> [BS options: Comprehensive Botany; Customizable; Ecology, Evolution, and Conservation; Molecular, Cellular, and Genomic Botany; Mycology and Plant Pathology]	SC		
▶ <b>Botany and Plant Pathology</b>		●	●
▶ <b>Crop and Soil Science</b> [BS Options: Agronomy; Plant Breeding and Genetics; Soil Science]	SC		
▶ <b>Crop Science</b> [MS, PhD options: Entomology; Plant Breeding and Genetics]		●	●
Entomology		●	●
Environmental Economics and Policy	EV		
Fisheries and Wildlife Administration		●	
▶ <b>Fisheries, Wildlife, and Conservation Sciences</b>	SC		
Fisheries Sciences		●	●
▶ <b>Food Science and Sustainable Technology</b> [BS options: Enology and Viticulture; Fermentation Science; Food Science]	FS	●	●
▶ <b>Horticulture</b> [BS options: Ecological Management of Turf, Landscape and Urban Horticulture; General Horticulture; Horticultural Research; Plant Breeding, Genetics and Genomics; Sustainable Horticultural Production; Therapeutic Horticulture; Viticulture and Enology] [MS, PhD options: Entomology; Plant Breeding and Genetics]	NR	●	●
▶ <b>Rangeland Ecology and Management</b>		●	●
▶ <b>Rangeland Sciences</b>	NR		
▶ <b>Soil Science</b>		●	●
▶ <b>Sustainability</b>	SC		
▶ <b>Toxicology</b>		●	●
▶ <b>Wildlife Science</b>		●	●

	B	M	D
College of Business			
Accountancy [BS options: Information Security, Assurance and Analytics; International Business]	BU		
Apparel Design [BS options: Sports Business]	DA		
▶ <b>Business</b> [MSB options: Finance; Financial Analytics; Marketing Insights and Analytics; Supply Chain Analytics]		GP MID	
<b>Business Administration/MBA</b> [BA, BS options: Digital Marketing; Family Business; General Business (also at OSU-Cascades); Hospitality Management (also at OSU-Cascades); Innovation and Entrepreneurship; International Business (also at OSU-Cascades); Marketing; Merchandising Management; Retail Management; Supply Chain and Logistics Management; Sports Business] [MBA, PhD options: Accounting (MBA only); Business Analytics; Corporate Finance; Human Resource Management; Organizational Leadership; Innovation Management (MBA only); Marketing; Research Thesis; Strategy; Entrepreneurship, and Innovation (PhD only); Supply Chain and Logistics Management]	BU	GP	●
▶ <b>Business Analytics</b> [BS options: Digital Marketing Analytics; Human Resource Analytics; Consumer Analytics; Sports Business; International Business; Market Research and Consumer Analytics]		●	
Business Information Systems [BA, BS option: International Business]	BU		
Design and Innovation Management Major [BA, BS option: Sports Business]	DA		
Finance [BA, BS option: International Business, Financial Planning]	BU		
Innovation Management	BU		
Interior Design [BA, BS option: Sports Business]	DA		
Organizational Leadership [BA, BS option: International Business]	BU		
Marketing [BA, BS option: International Business]	BU		
Product and Merchandising Management [BA, BS option: Sports Business]	●		
Supply Chain and Logistics Management [BA, BS option: International Business]	●		
College of Earth, Ocean and Atmospheric Sciences			
▶ <b>Climate Science</b>		●	
▶ <b>Environmental Sciences</b> [BS options: Alternative Energy; Applied Ecology; Aquatic Biology; Chemistry and the Environment; Conservation, Resources, and Sustainability; Earth Systems; Environmental Agriculture; Environmental Policy and Economics; Environmental Water Resources]	SC		
Geography and Geospatial Science	SC	●	●
▶ <b>Geology</b>		●	●
▶ <b>Marine Resource Management</b>			●
▶ <b>Oceanography</b>		●	
▶ <b>Ocean, Earth and Atmospheric Sciences</b>		●	●
College of Education			
Adult and Higher Education		●	
Counseling [MCoun options: Clinical Mental Health Counseling (OSU-Cascades only), Counselor Education, School Counseling (OSU-Cascades only)]		●	●
Education [BA, BS options: Advanced Mathematics Teaching; Biology Teaching; Chemistry Teaching; Elementary Teaching; Family and Consumer Sciences Teaching; Foundational Mathematics; Health Teaching; Integrated Science Teaching; Language Arts Teaching; Physics Teaching; Social Studies Teaching] [MS options: Science Education, Math Education] [PhD options: Agricultural Education; Language Equity and Education Policy; Science/Mathematics Education]	GE	●	●
Teaching (also at OSU-Cascades)	GE		
Teaching (MAT) [MAT options: Elementary (OSU-Cascades only), Language Arts (OSU-Cascades only), Mathematics (OSU-Cascades only), Music, Science (OSU-Cascades only), Social Studies (OSU-Cascades only)]		●	
College of Engineering			
▶ <b>Architectural Engineering</b>	EN		
▶ <b>Artificial Intelligence</b>		●	●
▶ <b>Bioengineering</b>	EN	GP MID	●

	B	M	D
▶ <b>Biological and Ecological Engineering</b>		●	●
▶ <b>Chemical Engineering</b>	EN	GP MID	●
▶ <b>Civil Engineering</b>	EN	GP MID	●
▶ <b>Computer Science</b> [BA, BS options: Applied Computer Science, Computer Systems] [BS options: Artificial Intelligence; Bioinformatics; Business and Entrepreneurship; Computer Systems; Cybersecurity; Data Science; Human-Computer Interaction; Robot Intelligence; Simulation and Game Programming; Web and Mobile Application Development]	CS	GP MID	●
▶ <b>Construction and Engineering Management</b>	EN		
▶ <b>Ecological Engineering</b>	EN		
▶ <b>Electrical and Computer Engineering</b>	EN	GP MID	●
▶ <b>Energy Systems Engineering</b> (OSU-Cascades Only)	EN		
▶ <b>Engineering Science</b> (OSU-Cascades Only) [BS Option: Energy Systems Engineering]	EN		
▶ <b>Environmental Engineering</b>	EN	GP MID	●
▶ <b>Industrial Engineering</b> [BS options: Business Engineering, Healthcare Systems Engineering, Industrial Automation Engineering] [Graduate options: Advanced Manufacturing, Engineering Management, Human Systems Engineering, Informational Systems Engineering, Manufacturing Systems Engineering]	EN	GP MID	●
▶ <b>Materials Science</b>		●	●
▶ <b>Mechanical Engineering</b> [BS options: Aerospace Engineering; Computational Engineering; Energy and Fluid Systems; Materials Design and Manufacturing; Mechanical Engineering Science; Product Design and Manufacturing; Robotic Control] [Graduate options: Advanced Manufacturing; Design; Dynamics and Controls; Engineering Management; Materials Mechanics; Renewable Energy; Robotics and Thermal Fluid Sciences]	EN	GP	●
▶ <b>Nuclear Engineering</b>	EN	●	●
Outdoor Products (OSU-Cascades Only)	BU		
▶ <b>Radiation Health Physics</b> [BS option: Radiation Health Physics Pre-Med]	SC	●	●
▶ <b>Robotics</b>		●	●
Water Resources Engineering		●	●
College of Forestry			
▶ <b>Forest Ecosystem and Society</b>		●	●
▶ <b>Forest Engineering</b>	FO		
▶ <b>Forest Engineering/Civil Engineering</b>	EN		
▶ <b>Forestry</b> [BS options: Forest Management, Forest Operations Management, Forest Restoration and Fire]	FO		
<b>Natural Resources</b> [BS options: Conservation Law Enforcement; Ecological Restoration; Fish and Wildlife Conservation; Forest Ecosystems; Human Dimensions in Natural Resources; Individual Specialty: Intergrated Conservation Analyst; Landscape Analysis; Natural Resource Education; Policy and Management; Urban Forest Landscapes; Wildland Fire Ecology]	NR		
▶ <b>Wood Innovation and Sustainability</b> [BS options: Art and Design; Management and Marketing; Science and Engineering]	NR		
▶ <b>Tourism, Recreation, and Adventure Leadership</b> [BS options: Adventure Leadership Education (OSU-Cascades only); Nature, Eco, and Adventure Tourism (OSU-Cascades only); Outdoor Recreation Management (OSU-Corvallis only); Sustainable Tourism Management (OSU-Corvallis only)]	FO		
<b>Sustainable Forest Management</b> [MS/PhD Concentrations: Forest Operations Planning and Management, Forest Policy Analysis and Economics; Forest Biometrics and Geomatics; Silviculture, Fire and Forest Health; Forest Soil and Watershed Processes; Engineering for Sustainable Forestry] [MF Options: Forest Business for Private Landowners; Spatial Science and Analysis; Silviculture, Fire and Forest Health]		●	●
▶ <b>Wood Science</b>		●	●
College of Liberal Arts			
<b>American Studies</b> (OSU-Cascades Only) [BA, BS options: American Cultures and Identities; Culture and Natural Environments; General American Studies; Pre-Law Studies]	GE		
<b>Anthropology</b> [BA, BS options: Archaeology, Biocultural, Cultural/Linguistics, General Anthropology]	GE		
Applied Anthropology		●	●
Applied Ethics		●	
Art [BA, BS, BFA options: Art History (BA, BS only); Photography and Digital Studio (BA, BS, BFA); Studio Art (BA, BS, BFA)]	GE		
Arts, Media and Technology (OSU-Cascades Only)	GE		
College Student Services Administration		●	
Communication		●	
Creative Writing	GE	●	
▶ <b>Digital Communication Arts</b>	GE		
<b>Economics</b> [BA, BS Options: General Economics; Law, Economics and Policy; Managerial Economics; Mathematical Economics]	GE		
English	GE	●	
Environmental Arts and Humanities		●	
Ethnic Studies	GE		
French	GE		
German	GE		
Graphic Design	GE		
History [MA, MS options: Community History and Civic Engagement; Global Perspectives on War, Peace, and Empire; History of Science and Technology]	GE	●	
History and Philosophy of Science		●	●
International Studies		●	
Liberal Studies [BA, BS option: Pre-Education]	GE		
▶ <b>Marine Studies</b>		●	

	B	M	D
<b>Music</b> [BA, BS option: Music Production; Instrumental Performance; Music Education; Piano Performance; Vocal Performance]	●		
<b>Philosophy</b>	GE		
<b>Political Science</b> [BA, BS options: Environmental and Energy Politics; International Affairs; Law and Politics]	GE		
<b>Psychology</b> (MS and PhD only available at Corvallis) [Graduate option: Clinical Science]	PS	●	●
<b>Public Policy</b>	PP	●	●
<b>Religious Studies</b>	GE		
<b>Social Science</b> [BA, BS option: Community Development and Leadership] (OSU-Cascades Only) [BA, BS options: Community Development and Leadership; Cultures and Identities; General Social Science; Humans and the Environment; Law and Society]	GE		
<b>Sociology</b> [BA, BS options: Crime and Justice; Social Service and Advocacy; Environmental and Natural Resource Sociology]	PP		
Spanish	GE		
Speech Communication	GE		
Theatre Arts	●		
Women, Gender and Sexuality Studies	WG	●	●

College of Pharmacy			
▶ <b>Pharmaceutical Sciences</b>		●	●
Pharmacy, Doctor of Pharmacy (4-year professional program)			●
College of Health			
Adapted Physical Education		●	
Athletic Training		●	
<b>Human Development and Family Sciences</b> [BS options: Child Development; Early Childhood (OSU-Cascades only); General Human Development and Family Sciences; Human Services (also at OSU-Cascades)]	ES	●	●
<b>Kinesiology</b> [BS options: Therapy and Allied Health (also at OSU-Cascades)] [MS, PhD option: Adapted Physical Activity]	ES	●	●
<b>Nutrition</b> [BS options: Dietetics; Nutrition in Foodservice, Culinary and Food Systems; Nutrition and Health Sciences; Pre-Dietetics]	ES	●	●
<b>Public Health</b> [BS options: Health Management and Policy; General Public Health; Health Promotion and Health Behavior] [MPH, PhD options: Biostatistics; Environmental and Occupational Health; Epidemiology; Global Health; Health Promotion and Health Behavior; Health Systems and Policy; Physical Activity; Public Health Practice]	ES	GP	●
Physical Therapy (DPT) [professional program; OSU-Cascades only]			●
College of Science			
▶ <b>Biochemistry and Biophysics</b> [BS options: Advanced Biophysics; Neuroscience; Pre-Medicine/Biochemistry and Biophysics]	SC	●	●
▶ <b>Biochemistry and Molecular Biology</b> [BS options: Advanced Molecular Biology; Computational Molecular Biology; Pre-Medicine/Biochemistry and Molecular Biology]	SC		
<b>BioHealth Sciences</b> [BS options: Pre-Clinical Laboratory Science, Pre-Dentistry, Pre-Medicine/Pre-Podiatry, Pre-Optometry, Pre-Pharmacy, Pre-Physical Therapy, Pre-Physician Assistant]	SC		
▶ <b>Biology</b> [BS options: Ecology, Genetics, Marine Biology and Ecology, Physiology and Behavior, Pre-Dentistry Biology, Pre-Education Biology, Pre-Medicine Biology, Pre-Veterinary Medicine]	SC	●	●
▶ <b>Chemistry</b> [BA, BS options: Advanced Biochemistry, Advanced Chemistry, Biochemistry, Business, Chemical Engineering, Chemistry Education, Environmental Chemistry, Forensic Science, Materials Science, Pre-Medicine] [MA, MS concentrations: Analytical Chemistry, Inorganic Chemistry, <b>Materials Chemistry</b> , Nuclear Chemistry, Organic Chemistry, Physical Chemistry]	SC	GP	●
▶ <b>Data Analytics</b>		●	
▶ <b>Integrative Biology</b>		●	●
▶ <b>Mathematics</b> [BS options: Applied and Computational Mathematics; Mathematical Biology; Secondary Teaching Emphasis; Statistics]	MA	GP	●
▶ <b>Microbiology</b> [BS options: Aquatic Microbiology, Pre-Medicine/Microbiology]	SC	●	●
▶ <b>Physics/Applied Physics</b> [BA, BS options: Applied Physics, Biological Physics, Chemical Physics, Computational Physics, Geophysics, Mathematical Physics, Optical Physics, Physics Teaching/Physics]	SC	●	●
▶ <b>Statistics</b>		●	●
▶ <b>Zoology</b>	SC		

Carlson College of Veterinary Medicine			
Veterinary Medicine - DVM			●
<b>Comparative Health Sciences</b> [MS, PhD options: Biomedical Sciences; Clinical Sciences; Veterinary Health]		GP	GP
Graduate School Interdisciplinary Programs			
▶ <b>Environmental Sciences</b> [MA, MS, PSM, PhD]		GP MID	●
Interdisciplinary Studies		●	
▶ <b>Water Resources Engineering</b>		●	●
▶ <b>Water Resources Policy and Management</b>		●	
▶ <b>Water Resources Science</b>		●	●



To learn more about our programs, please scan the QR code or visit [www.intostudy.com/en/universities/oregon-state-university/programs](http://www.intostudy.com/en/universities/oregon-state-university/programs)

For our complete program catalog, please visit [oregonstate.edu/academics](http://oregonstate.edu/academics)



# Experience CAMPUS LIFE

- Over 400 clubs, societies and organizations, including sororities and fraternities, service projects and professional organizations.
- 40+ intramural and club sports teams for competition at every level.
- Facilities inclusive of different faiths, including prayer spaces, dietary accommodations and foot washing stations.
- Recreation centers with gyms, fields, tracks, rock climbing walls, pools, weight rooms and more.

## Living on campus

Student type	REQUIRED	NOT REQUIRED
Academic English (AE)		●
International Year One (IYO) / AE + IYO	●*	
Undergraduate first-year students / AE + UG first-year	●*	
Undergraduate Transfer Program (UTP) / AE + UTP	●*	
Master's International Direct (MID)		●
Graduate Pathway (GPW) / AE + GPW		●

\*Students more than one year past high school graduation are not required to live on campus.



## Dining

The Corvallis campus has 18 dining centers, in addition to a number of cafés and five grocery stores across campus. Whether you're in the mood for a nutritious meal or a tasty treat, you'll be sure to find it here, with offerings in Italian, Asian, Mexican and classic American fare, as well as delis, coffee houses and more.

On-campus dining also accommodates a variety of dietary needs, including halal, gluten-free, allergen-free, vegetarian and vegan options.



Bedroom layout

# Funding your FUTURE

## Jump Start Employment Program

Secure an on-campus job before leaving your home country and earn up to

# \$20,000+

per year at one of Oregon State's thousands of student jobs.

Scholarships and awards up to

# \$64,000

Find out more at

[admissions.oregonstate.edu/  
international/scholarships-  
international-students](https://admissions.oregonstate.edu/international/scholarships-international-students)

## Estimated cost of attendance



Please scan the QR code for the most up-to-date tuition and scholarship information.



EXPLORE YOUR HOUSING OPTIONS  
[intoosu.oregonstate.edu/on-campus-housing](https://intoosu.oregonstate.edu/on-campus-housing)







### INTO Oregon State University

Oregon State University  
1701 SW Western Boulevard  
Corvallis, OR 97333  
USA

T: +1 541 737 2464

E: [intladmit@oregonstate.edu](mailto:intladmit@oregonstate.edu)

[www.intostudy.com/osu](http://www.intostudy.com/osu)



YOUVISIT VIRTUAL TOUR

[www.youvisit.com/tour/oregonstate](http://www.youvisit.com/tour/oregonstate)

### Find us on:



[facebook.com/INTO.oregonstate](https://facebook.com/INTO.oregonstate)



[instagram.com/INTOoregonstate](https://instagram.com/INTOoregonstate)



[x.com/INTO\\_OSU](https://x.com/INTO_OSU)



[myinto/OSU\\_YouTube](https://myinto.OSU_YouTube)



WeChat (QR code below)



# HOW TO APPLY

Choose from two easy ways to apply

1

Apply via your local  
INTO educational counselor

2

Apply online  
Complete our online application form:

Pathway admission  
[www.intostudy.com/osu](http://www.intostudy.com/osu)

Direct admission  
[admissions.oregonstate.edu/international](https://admissions.oregonstate.edu/international)



For more information on  
International Admissions,  
scan here:



Through innovative partnerships with leading universities, we expand opportunities for higher education, ensuring success and transforming the lives of our students and staff.

### Discover more online

For counselors:



For students:



Education counselor's stamp

Connect with us

