



MERCY COLLEGE- NEW YORK

MERCY
COLLEGE



The image features the letters 'USA' in a large, bold, white sans-serif font. The text is centered horizontally and slightly lower in the frame. The background is a close-up, slightly blurred view of the American flag, showing the blue field with white stars on the left and the red and white stripes on the right. The lighting is soft, and the colors are vibrant.

USA

Why study in the USA?

The USA is a vast country, and every state is unique in its culture, climate, history, economy and more. There are many reasons that students choose to study here from the excellent choice in universities to famous landmarks across all 50 states.



The leading destination for higher education

and top destination globally for international students, with currently over 1 million enrolled.



Home to some of the worlds most renowned universities

Including Harvard, MIT, Yale and Princeton.



Home to some of the worlds most famous cities

and attractions including Boston, Grand Canyon, New York City and San Francisco



Why a USA Degree?

1

Most respected and recognized degrees in the world

2

Flexibility of education system

- Majors
- Minors
- Double majors
- General Education classes

3

Ability to choose your major after 1 or 2 years of study

4

Ability to pursue honours

5

USA degree opens various career options

Employment Opportunities

During and after Study

CPT (Curricular Practical Training)

Experiences may include internships, student teaching, cooperative education programs and practical experiences which are a required part of the student's academic program, or for which academic credit is granted.

OPT (Optional Practical Training)

Stay and work in the USA after graduation. OPT allows international students to work in the USA for an initial period of 12 months, with the possibility for STEM (Science, Technology, Engineering and Mathematics) students to extend this by a further 29 months.

On-campus employment

Limited to 20 hours per week when school is in session or full-time during holiday and vacation periods.

New York is one of the world's great study destinations. Home to well over 8 million people, the city has a rich and diverse population.

A hub for students

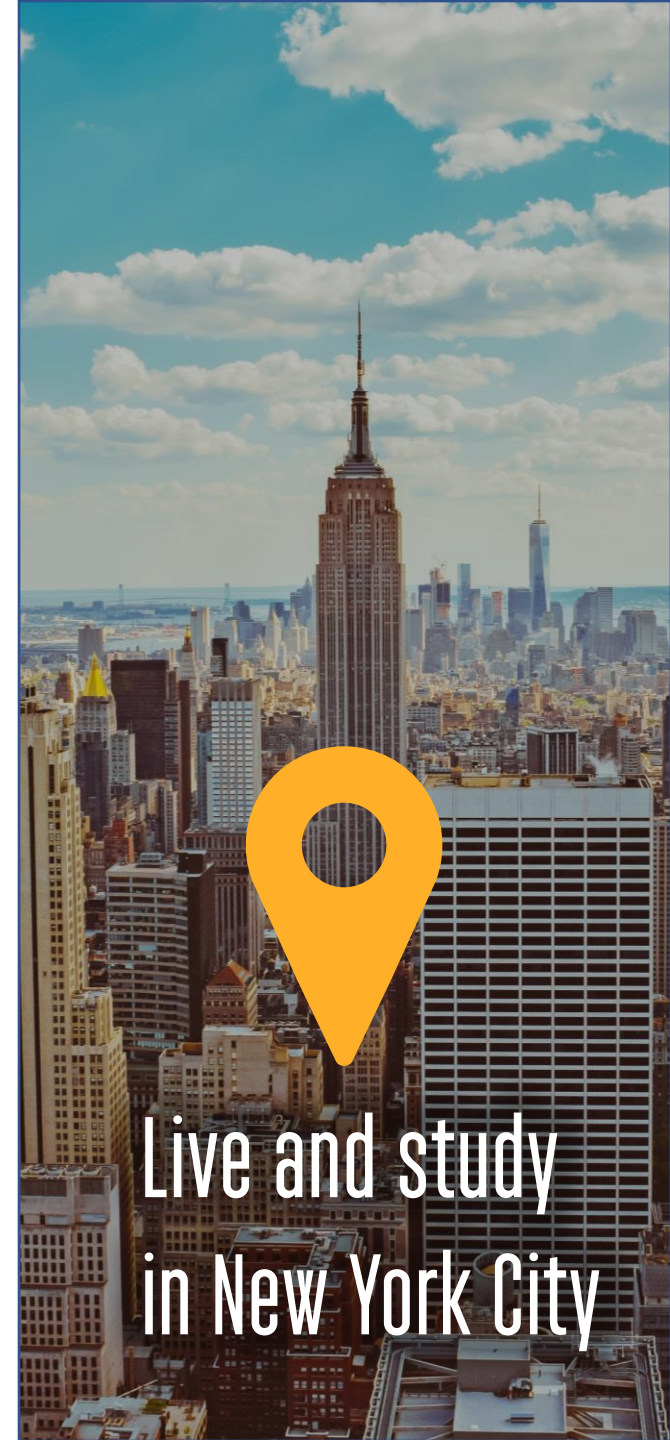
With over 400 colleges and universities, including New York University, Columbia University, and Cornell University

One of the most diverse cities in the world

Around a third of its extensive population was born somewhere other than the United States, and it is estimated that as many as 800 different languages or dialects are spoken in the city.

World famous landmarks

There's plenty for you to explore across the five boroughs of Brooklyn, Manhattan, Queens, Staten Island and The Bronx.



Live and study
in New York City



MERCY COLLEGE



Founded in 1959, Mercy College has 3 New York City campuses in Manhattan, Dobbs Ferry and Bronx.

New York City





MANHATTAN CAMPUS



DOBBS FERRY CAMPUS



Students can live in the
city or the **suburban**

Mercy College entry points

- **Undergraduate pathway entry**
Equivalent to freshman year (Year 1), at Mercy College International Manhattan
- **Undergraduate DIRECT entry**
into Mercy College freshman year
- **Graduate pathway entry**
1- 3 semesters prior to starting Graduate program, at Mercy College International Manhattan
- **Graduate DIRECT entry**
into Mercy College



Welcome to MercyManhattan

What makes Mercy College special...



Social mobility

Recognised in the top 20%
of schools in the US



University benefits

Students have access to
all university facilities
and services



Proven success

Enjoyed by 70,000
graduates from across
the world



Diverse study

with a choice of over
100 academic routes



Best location

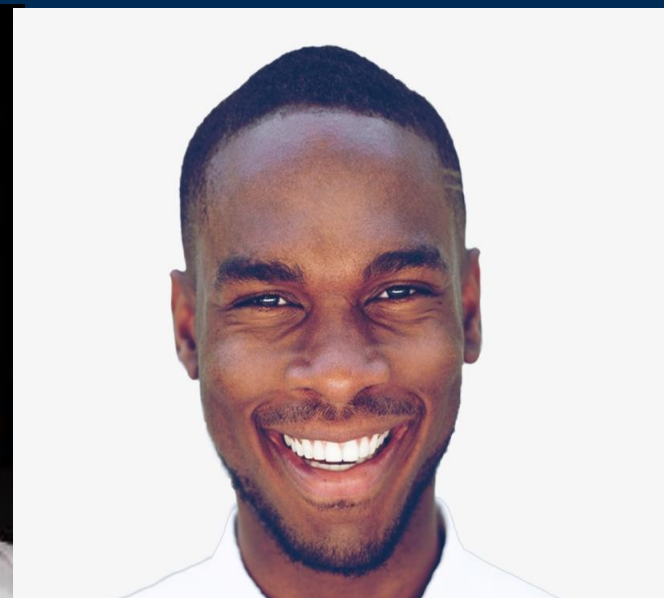
for international students with
the most affordable tuition
rates in Manhattan



Student support

Delivered in small
classes by experienced
staff

Global Environment



International Student Population Growing at Mercy

A renewed commitment to increase international student enrollment is underway — as Mercy College targets ambitious students seeking an education beyond their national borders.

INTERNATIONAL STUDENTS AT MERCY COLLEGE

Fall 2020	122 students	50 countries
Fall 2021	171 students	55 countries
Fall 2022	214 students	60 countries

ENHANCED RECRUITMENT EFFORTS BY THE OFFICE OF INTERNATIONAL ADMISSIONS (OIA)

- International recruiting teams travel 4-6 weeks to 10 different countries.
- Growth objectives include:
 - Professional conferences to explore new developments in global education
 - Face-to-face meetings with prospective students
 - Opportunities for Mercy faculty and staff to present and share best practices



6.5% of Mercy's International Students are from **NORTH AMERICA**

Canada (4)
Honduras (3)
Jamaica (3)
Mexico (3)

37% of Mercy's International Students are from **EUROPE**

Norway (26)
Spain (7)
Sweden (7)

35.5% of Mercy's International Students are from **ASIA**

India (18)
Bangladesh (17)
South Korea (9)

10% of Mercy's International Students are from **AFRICA**

Morocco (4)
Nigeria (3)
Republic of Congo (2)
South Africa (2)
Tunisia (2)

11% of Mercy's International Students are from **SOUTH AMERICA**

Brazil (8)
Chile (6)
Ecuador (4)

SCHOLARSHIPS



- OIA directs international applicants toward sources of funding.
- Merit-based scholarships attract the world's best and brightest students.

PARTNERSHIPS: Mercy's new partnerships help international students develop skills they need for college success.



- A new partnership between Mercy College and Oxford International Educational Group (OIEG) provides students a pathway to obtain a college degree in the United States. OIEG will provide linguistic, cultural and academic support at MercyManhattan. Mercy College will apply for program approval from the Department of Homeland Security through the Student and Exchange Visitor Program and hopes to begin in summer 2023.
- The Institute of International Education, Inc., creates scholarship programs and resources for hosting colleges.
- Education First, an ESL provider based in Tarrytown, NY, offers programs close to campus.



Discover Mercy College Campuses

3 CAMPUSES IN THE METRO NEW YORK AREA



Dobbs Ferry Campus

555 Broadway
Dobbs Ferry, NY 10522
914-674-7600



Bronx Campus

1200 Waters Place
Bronx, NY 10461
718-678-8899



Manhattan Campus



47 West 34th Street
New York, NY 10001
914-674-7600



WELCOME TO THE NEW
MercyManhattan
— where the splendor of the city meets the comforts of campus —



MercyManhattan

Located on 34th Street at Herald Square, Mercy Manhattan offers an especially unique college experience. Mercy College International students will study solely at the Mercy Manhattan campus.



Easy to access from the Metro area



Affordable living in iconic Manhattan



New, high-tech spaces and facilities



Full access to all facilities at Mercy College
Dobbs Ferry



CAMPUS LOCATIONS

Manhattan

MERCY
COLLEGE
FOR THOSE WITH A PASSION TO GET AHEAD



A stylized map of Manhattan, New York, showing the grid of streets. The Hudson River is on the left. Several locations are marked with blue circles and orange location pins. The locations are: Hudson River, Penn Station, Macy's, Mercy College Manhattan, Empire State Building, Madison Square Park, Bryant Park, and Rockefeller Center.

Hudson River

Penn Station

Macy's

Mercy College
Manhattan

Empire State
Building

Madison
Square Park

Bryant Park

Rockefeller
Center

MercyManhattan Official Opening



New innovative classrooms



State-of-the-art dining area





Mercy Manhattan Campus

Accommodation

Dorm 34 is the Mercy Manhattan student living space. When you stay on campus in Dorm 34, you'll enjoy the benefits of life in New York City, only a few minutes away from your studies. *(Subject to availability)*



Panoramic views of Manhattan and Herald Square



Fully-furnished bedrooms with bed, desk and wardrobe closet



Laundry facilities with washers and dryers available



Wi-fi coverage, cable hook-ups and free printing



Community lounges to socialize with fellow students



Tasty meal plans with 'All you care to eat' on-campus dining



2023/24 Room Rates

\$6,100 per semester (\$12,200 per year)

2023/24 Meal Plan Rate

\$2,050 per semester (\$4,100 per year)



Live right in the heart of Midtown

Life at Mercy : Manhattan Campus



Dobbs Ferry

Dobbs Ferry, 30 minute shuttle from Manhattan, is located along the Hudson River and includes a stunning central library as well newly renovated sporting facilities for students to use.



Located in Westchester the Dobbs Ferry Campus is a shuttle bus (or Metro) ride away from Mercy Manhattan and The Bronx campus'



Students can enjoy the extensive library, sports facilities and community life



Dobbs Ferry is home to 10 NCAA Division II Athletic teams. Go Mavericks!

Dobbs Ferry from the skies



Accommodation

Founders Hall is predominately for first year students. With double, triple, and quad occupancy rooms and shared bathrooms, commons areas, and lounges, the set up is ideal for student interaction and engagement.

Hudson Hall is our predominately upperclassmen and transfer hall at Dobbs Ferry. All rooms are double rooms in a suite style set up. There are two bedroom/one bathroom and three bedroom/two bathroom options.



Views of the Hudson River as well as being central to Mercy student life



Fully-furnished bedrooms with bed, desk and wardrobe closet



Laundry facilities with washers and dryers available



Wi-fi coverage, cable hook-ups and free printing



Community lounges to socialize with fellow students



Tasty meal plans with 'All you care to eat' on-campus dining

2023/24 Room Rates

Founders Hall

\$5,300-5,750 per semester
(\$10,600-11,500 per year)

Hudson Hall

\$5,450/semester
(\$10,900/year)

2023/24 Meal Plan Rate

\$2,050 per semester
(\$4,100 per year)

Campus Life

Dobbs Ferry is home to many clubs, activities, and organizations. Whether you're interested in art, cultural, professional development, sports, religious or social activities, Mercy College has something for you.

- Over 50 student clubs
- 'The Impact', Mercy's award-winning student paper, is published on campus
- 10 teams in NCAA Division II Sports
- Leadership, community service and mentorship opportunities





Mercy College Dobbs Ferry is home of the Mercy Mavericks, with 10 NCAA Division II Athletics teams including:

- Basketball
- Field Hockey
- Lacrosse (Ranked No. 4 Nationally in Nike/USA Lacrosse Top 20 Poll)
- Soccer (football!)
- Softball
- Volleyball
- Baseball



Go Mavericks!



Mentorship and student support

When students graduated into Mercy College sophomore year, the college will assign a personal mentor who can support every part of their student journey.

The nationally recognized PACT mentor program helps students navigate academic advising, career development, financial aid and student life.

Our Placement Director works with students to make sure that they are career ready with resume reviews, interview preparation and salary negotiations.





Bronx

Mercy College's campus in the Hutchinson Metro Center offers a quality education in the heart of the Bronx.



Cafeteria and student lounges



State-of-the-art Labs



Easy access to subways and buses, with a shuttle to the Dobbs Ferry Campus



Mercy College International

Undergraduate Areas of Study

School of business

Accounting

- General Accounting
- Management Accounting
- Public Accounting

Business Administration

- Data Analytics
- Entrepreneurship
- Finance
- International Business
- Management
- Marketing
- Sport Management

School of Liberal Arts

Computer Information Systems (STEM)

Computer Science (STEM)

Cybersecurity Design & Animation

- Graphic Design
- Animation

Mathematics (STEM)

Media Studies

- Film and Culture Journalism
- Radio and TV Production

Music Production and Recording Arts

School of Social and Behavioral Sciences

Behavioral Science

Criminal Justice

- Forensic Investigation
- Homeland Security

International Relations and Diplomacy

Psychology

Social Work

Sociology

School of Health and Natural Sciences

Biology (STEM)

Clinical Laboratory Science (STEM)

Exercise Science

Health Science



International Pathway Entry

For students with an IELTS of 4.5, 5.0, 5.5+ we offer an International 'pathway entry' program at Mercy College International

- This is a two-semester* pathway program at the Mercy Manhattan campus with dedicated support for international students.
- Students take a series of academic courses in the first year earning 24 credits.
- We set a program of English Language Support classes (depending on entry level) which run alongside the academic program during this first year.
- Earn course credits from the academic program to progress onto future study of your chosen degree at Mercy College on your choice of campus.

**for IELTS 4.5 this is extended to a 3 semester with additional support*

Undergraduate Pathway

In the first year as a Freshman – and before joining the second year as a Sophomore – pathway students at Mercy College International boost their English Language skills and take general education courses.

You will have the flexibility to make the final decision about what majors* you wish to study in your chosen degree program once you have completed the first year of your pathway program.

*Excluding nursing

- Academic entry equivalent to a 2.3 GPA Kotogakko Sotugyo Shosho 3.5/5.0
- 3 intakes a year: August, January and May
- SAT/ACT not required
- Internships and Professional Opportunities
- Students will receive 24 credits at the end of their pathway year



IELTS 4.5
(3 semester program)

Semester 1 (earn 3 credits)

Living & Studying in New York City

26 hours of English Language Support – Intermediate Communication + Immersive Experience, English for Academic Success, Academic Support

Semester 2 (earn 9 credits)

Elements of Exposition AND Written English and Literary Studies

Mathematics for the Liberal Arts OR College Algebra

18 hours of English Language Support – EAP High Intermediate English for Academic Purposes, Immersive Student Experience, Student Success Strategies, Academic Support

Semester 3 (earn 12 credits)

Written English and Literary Studies II AND Oral Communication AND Critical Enquiry

Pre-Calculus OR Foundations of Computing I OR Introduction to Statistical Reasoning.

15 hours of English Language Support – EAP Advanced English for Academic Purposes, Immersive Student Experience, Student Success Strategies, Academic Support

IELTS 5.0
(2 semester program)

Semester 1 (earn 12 credits)

Living & Studying in New York City AND Elements of Exposition AND Written English and Literary Studies

Mathematics for the Liberal Arts OR College Algebra

18 hours of English Language Support – EAP High Intermediate English for Academic Purposes, Immersive Student Experience, Student Success Strategies, Academic Support

Semester 2 (earn 12 credits)

Written English and Literary Studies II AND Oral Communication AND Critical Enquiry

Pre-Calculus OR Foundations of Computing I OR Introduction to Statistical Reasoning.

15 hours of English Language Support – EAP Advanced English for Academic Purposes, Immersive Student Experience, Student Success Strategies, Academic Support

IELTS 5.5
(2 semester program)

Semester 1 (earn 12 credits)

Living & Studying in New York City AND Introduction to Computers and Application Software AND Written English and Literary Studies

Mathematics for the Liberal Arts OR College Algebra

15 hours of English Language Support – EAP Advanced English for Academic Purposes, Immersive Student Experience, Student Success Strategies, Academic Support

Semester 2 (earn 12 credits)

Written English and Literary Studies II AND Oral Communication AND Critical Enquiry

Pre-Calculus OR Foundations of Computing I OR Introduction to Statistical Reasoning.

12 hours of English Language Support – EAP Advanced English Skills for Academic Purposes, Immersive Student Experience, Student Success Strategies, Academic Support

English Language Requirements

Entry point	IELTS	Oxford ELLT	TOEFL IBT	Duolingo
Three Term	4.5	2	45	65
Two Term	5.0	3	50	80
Two Term (Advanced)	5.5	4	59	95
Direct	UG 6.0 Grad 6.5	UG 6 Grad 7	UG 71 Grad 80	UG 105 Grad 110

OXFORD ELLT

Visit oidigitalinstitute.com find out how you can take your English Language test with Oxford ELLT.

Alternatively, applicants who are able to demonstrate 2 years of full-time academic study in the following countries where the language of instruction was English, are exempt from supplying an English proficiency exam for admission into Mercy College International.

American Samoa	Anguilla	Antigua
Australia	Bahamas	Barbados
Belize	British Virgin Islands	Canada
Dominica	Gambia	Ghana
Grand Cayman	Grenada	Guyana
Ireland	Jamaica	Kenya
New Zealand	Nigeria	Saint Kitts and Nevis
Saint Vincent and the Grenadines	Scotland	St. Lucia
Singapore	South Africa	Swaziland
Tanzania	Trinidad/Tobago	Turks and Caicos Islands
Uganda	United Kingdom	U.S. Pacific Trust
Zambia	Zimbabwe	

Graduate Pathways

The Mercy College International Graduate Pathway is for Undergraduate students who are ready to further their education into a MS/MSc (Masters) level.

- Academic entry equivalent to a 2.7 GPA
- No GRE/GMAT requirement
- 1 - 3 semesters dependent on English proficiency level.
- 6 – 12 Credits gained towards full graduate program
- 3 intakes a year: August, January and May



MS Computer Science Pathway



MS Cybersecurity Pathway



Master of Business Administration Pathway (MBA)



MS Business Analytics Pathway



MBA Pathway

Earn your MBA in the heart of the business capital of the world. In just one year, you can put the country's premier business credential in your hands. You will learn through hands-on-experiences giving you the opportunity to work on real projects, for real clients.

The MBA program allows you to concentrate in one of nine areas of business, adding even more value to your degree.

- Accounting
- Finance
- Health Care Management
- Human Resource Management
- International Business
- Management
- Managerial Analytics
- Marketing
- Organizational Leadership



JOB OUTLOOK

8% Job Growth in the Business & Financial Services industries experience average job growth.*



\$ 76K

The AVERAGE SALARY in the Business & Financial Services industries is \$76,570.**

**Bureau of Labor Statistics,
Occupational Outlook Handbook*

***Glassdoor.com*

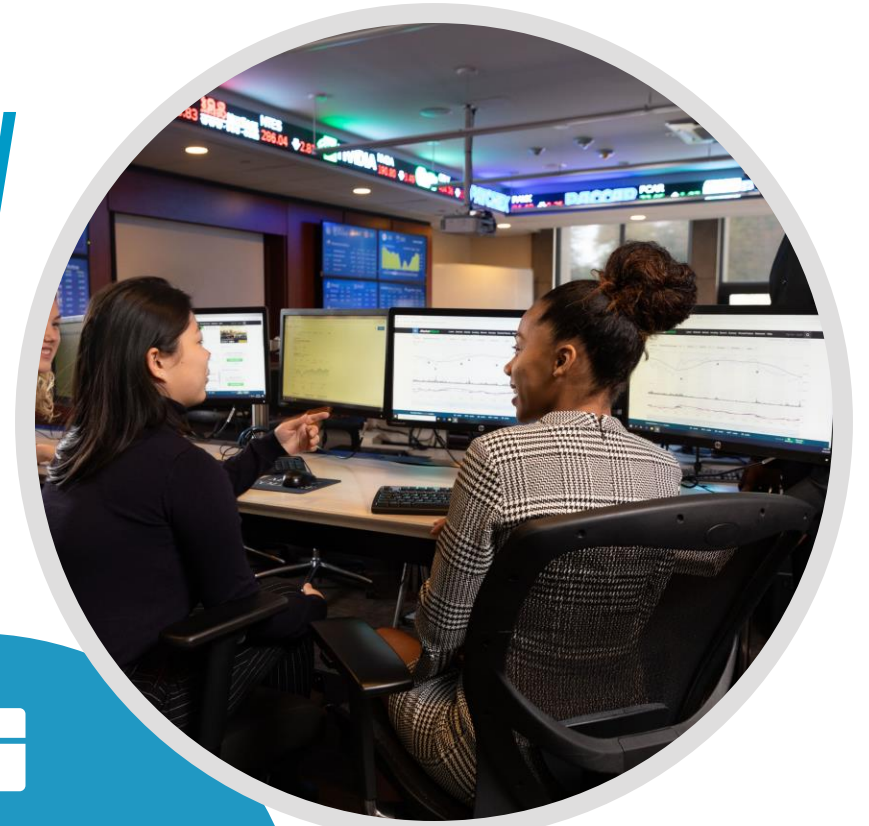
MSc Business Analytics Pathway

The Master of Science in Business Analytics prepares graduates for employment in a high growth area of the economy. While at Mercy, students will expand their proficiency in the latest analytic technologies.

The business world is undergoing a data revolution. Most companies are moving toward gathering data with the objective of driving business decisions. There is a pressing need for students with skills at the intersection of business and data science

Career opportunities include:

- Financial analyst
- Management analyst
- Marketing analyst
- Operations research analyst
- Operations manager
- Analytics consultant
- Business analyst



JOB OUTLOOK

Employment of Business Analysts is projected to grow **14%** from 2020 - 2030, faster than average for all occupations.*

**Bureau of Labor Statistics,
Occupational Outlook Handbook*



\$ 93K

The AVERAGE SALARY for Business Analyst is **\$93,000**.**

***Glassdoor.com*

MSc Computer Science Pathway

The Computer Science Master of Science degree equips students with cutting edge knowledge and tools to solve data science and software development problems.

The program starts by providing fundamental computer science theories that make skilled practice possible.

Choose from concentrations in data science or software development to pursue a career that best fits your interests. Data scientists and software developers receive comparable salaries.

Career opportunities include:

- Programmer
- Web Administrator
- Analyst
- Network Engineer
- Software Engineer
- Game Programmer



JOB OUTLOOK

Job growth for software developers is expected to **rise 22%** through 2030*, faster than average (8%). Job growth for computer and information research scientists is 16%.*

**Bureau of Labor Statistics,
Occupational Outlook Handbook*



\$ 139K

The AVERAGE PAY for a software developer or data scientist in New York is **\$139,170 annually** **

***Glassdoor.com*

MSc Cybersecurity Pathway

Information systems and computer networks are under constant attack from hackers, viruses and worms. The Cybersecurity Master of Science degree prepares students with the technical and analytical skills to secure data files, defend computers, shield computer networks and protect critical national electronic infrastructure.

The Mercy Cybersecurity Education Center has been designated by NSA and DHS. The Cybersecurity Program exhibits very high cyber defense competition and research activity regionally and nationally.

Career opportunities include:

- Information system security officer
- Data Analyst
- Network security administrator
- Data Scientist
- Information security analyst
- Forensic analyst
- IT auditor
- Information system governance officer



JOB OUTLOOK

Job growth for information security analysts is expected to rise **33%** through 2030, more than five times faster than average (8%).*



\$ 133K

The AVERAGE PAY for information security analysts in New York is **\$133,210** annually.**

**Bureau of Labor Statistics,
Occupational Outlook Handbook*

***Glassdoor.com*

Direct entry

Students who meet academic and English Language requirements start as a 'direct entry' student at Mercy College

- Choice of Undergraduate or Graduate programs*
- Take your first year as a Freshman alongside domestic US students
- Study at Dobbs Ferry, Manhattan or Bronx campus

OXFORD ELLT

Visit oidigitalinstitute.com find out how you can take your English Language test with Oxford ELLT.





Admissions Information

How to apply



The Mercy College application form will be housed in OIEG University partnerships website, using the same [application form](#) you are used to using already to our other centres



OIEG will process application all the way through to I-20 issuance will be provided by Mercy college directly to the applicant. OIEG will then share the details of this with the students agent to support.



Further details on this finalise process to be shared in agent training early in 2023.



Admissions process

- International Undergraduate Pathway / Direct Undergraduate
- Graduate Pathway
- Graduate Direct to MBA and MS Business Analytics

1

Make online Application

We will review your application and inform you/ your agent of your eligibility.

2 business days

2

Receive conditional offer letter

Offer shows all requirements and conditions you will need to meet be accepted to Mercy College.

3

Unconditional offer

Receive your letter of admission and full details required for I-20 processing

4

I-20

On receipt of all final documents required for I-20 processing, an official copy of both I-20 and MC admit letter will be emailed to the applicant directly.

5 business days

5

Visa appointment

On receipt of I-20, SEVIS payment can be made online, and a Visa appointment can be booked.

6

Enroll on your program

Congratulations!
Welcome to Mercy College International

Admissions process

- Graduate Direct all programs, excepting MBA and MS Business Analytics

1

Make online Application

We will review your application and inform you/ your agent of your eligibility.
2 business days

2

Offer in principle

Offer shows all requirements and conditions you will need to meet be accepted to Mercy College.

3

Unconditional offer

Unconditional offer processed after Mercy College Faculty review. Letter of admission and full details required for I-20 processing
10 Business days

4

I-20

On receipt of all final documents required for I-20 processing, an official copy of both I-20 and MC admit letter will be emailed to the applicant directly.
5 business days

5

Visa appointment

On receipt of I-20, SEVIS payment can be made online, and a Visa appointment can be booked.

6

Enroll on your program

Congratulations!
Welcome to Mercy College International

Tuition and fees

2023-24

Undergraduate Pathway - \$20,518 - \$25,518

Graduate Pathway - \$12,814 - \$18,414

Undergraduate Direct - \$21,236 (\$870 registration fee)

Graduate Direct - \$30,044 - \$37,044 (depending on the number of credits)

Graduate Direct (communication Disorders, Marriage and Family therapy, School Psychology) \$51,255-\$66,360

Estimated living costs - \$16,300

**Dorm 34
MercyManhattan**

\$6,100/semester
(\$12,200 per year)

**Founders Hall
Dobbs Ferry**

\$5,300/semester
(\$10,600 per year)

**Hudson Hall
Dobbs Ferry**

\$5,450/semester
(\$10,900/year)

2023/24 Meal Plan Rate *(mandatory for all residential students)*

\$2,050 per semester (\$4,100 per year)



Scholarship

2023-24

学部生のみ

Presidential Scholarship (GPA 3.50 – 4.00)	\$4,000.00
Mercy International Scholarship (GPA 3.00 – 3.39)	\$2,000.00
Mercy International Grant (GPA 2.50 – 2.99)	\$1,500.00
Transfer Students (from other universities or community college)	\$2,000.00 - \$7,000.00

※Pathwayコースの奨学金は現在ペンディングとなっております。

What makes Mercy College special...



Location, location, location

Central location in the heart of
New York with the most
affordable tuition rates in
Manhattan



University benefits

Students have access to
all university facilities
and services



Diverse study

with a choice of over
100 academic routes

Q&A

