

# Accommodation San Francisco & Berkeley, USA

2024



# Accommodation in Berkeley

Accommodation placement fee: US\$150

## Homestay

Our homestays are carefully selected and offer students the opportunity to learn about American culture and the California lifestyle in a comfortable setting.

- Welcoming and friendly atmosphere
- Carefully selected by our Student Services Coordinator and visited on a regular basis
- Choice of single rooms or twin rooms with bed and breakfast or half-board
- All bed linen and towels provided
- Laundry facilities available in the home or at local laundry for about US\$5
- Commutes range from 45 to 60 minutes
- Executive Supplement available



## Executive Homestay Option

Executive Homestays offer a private bathroom (en-suite or sole use). Limited availability; please contact if interested.

## Homestay Prices

### Homestay Weekly Rates (per person per week)

Single room, B&B	US\$320
Single room, Half Board	US\$395
Twin room*, B&B	US\$275
Twin room*, Half Board	US\$345

### Supplemental Rates (per person per week)

Summer Supplement (June 16 – August 25)	US\$40	Executive Supplement	US\$90
Special Diets B&B / HB	US\$25/50	Christmas Supplement (Dec 23 - Dec 27)	US\$60

### Extra Night Rates (per person per night)\*\*

Single room, B&B	US\$80	Twin room*, B&B	US\$70
Single room, Half Board	US\$95	Twin room*, Half Board	US\$85
Executive supplement	US\$35		

~no extra nights during the summertime

### Key

B&B = Bed and Breakfast (Breakfast only)

HB = Half Board (Breakfast and Dinner)

\* For students booking together with the same arrival and departure dates.

\*\* Subject to availability. Please check with the school before booking flight tickets.

## Residence

This option is more suitable for an independent student who is looking for a clean and basic accommodation at an affordable price. All students must be 18 or older, unless otherwise noted.

### Downtown Berkeley YMCA Residence (limited availability)

**Location:** Located just steps from shops, restaurants, theatres, BART and the University of California, Berkeley. 1 minute walk to LSI San Francisco/Berkeley. 30 minutes by train to San Francisco. 45 minutes by train to Oakland International Airport.

**Minimum age:** 18

**Rooms:** Single rooms

**Private Bathroom:** No, shared bathrooms

**Meals:** Self-catering

**Facilities:** Free Wi-Fi, community kitchen, fitness facilities (3 swimming pools, cardio, exercise equipment, and fitness classes), jacuzzi, hot tub, sauna, lounge/TV area, laundry facilities

**Prices (per person per week):**

**Single room:** from US\$365

US\$250 refundable security deposit charged on booking.

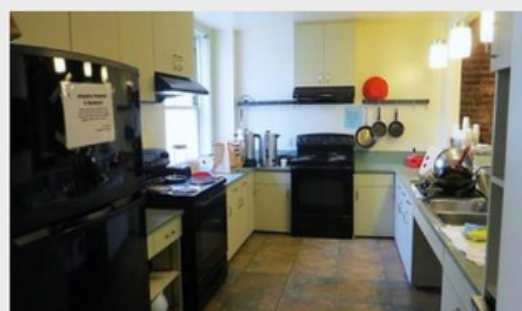
US\$200 Non-Refundable move in fee charged.

**Extra nights:** US\$80 for a single room

**Availability:** Year-round

**Other:** Daily housekeeping, towels and linens provided and 24-hour security/concierge

**Cancellation policy:** Cancellation free of charge until 30 days before arrival or the deposit of \$250 won't be refunded.



### Rental Properties and Sharehouses (independent accommodation)

**Location:** Various

**Facilities:** Facilities in share houses and rental properties often include kitchens, bathrooms and laundry facilities. Share house bedrooms often include bed, study desk and cupboard while rental properties are generally unfurnished.

**Prices:** Prices vary and normally a bond deposit of 1 month's rent is required.

**Other:** Availability and prices vary widely.

**Resources:** LSI Berkeley takes no responsibility for any rental or share house agreement into which a student may enter. Advertisements for rental properties and share house rooms may be found on [4stay.com](https://www.4stay.com) or [Airbnb.com](https://www.airbnb.com).

