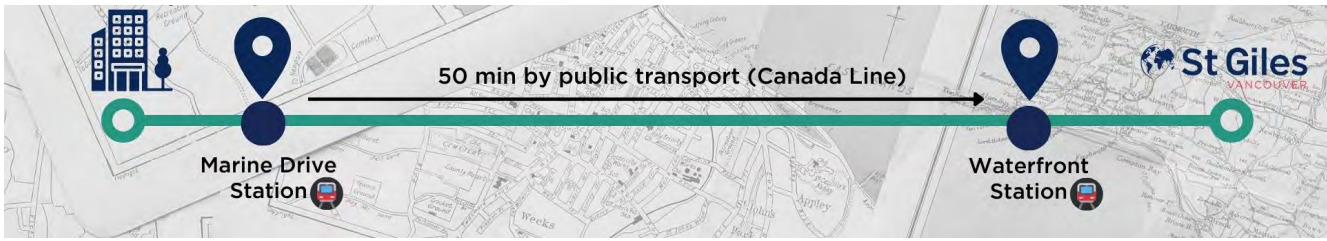


GEC MARINE GATEWAY



THE LOCATION

GEC Marine Gateway consists of our two newest buildings, featuring modern designs and energy-efficient amenities. This residence includes a beautifully landscaped outdoor area with gardens, seating, and public art. All apartments offer a spacious balcony or patio. GEC Marine Gateway is only a 1 minute walk from restaurants, shops, services, supermarkets, cinema and the Marine Drive Skytrain Station.

ARRIVAL & DEPARTURE

CHECK-IN*
Sundays
from 4pm



CHECK-OUT*
Sundays
before 11am

* **Check-in/Check-out:** There is a minimum stay of 5 weeks for this residence (min stay of two months for the single apartment, excluding June-Sept). Weekly rates are charged Sat-Sat or Sun-Sun regardless of weekday check-in/out.

WEEKLY PRICE

Semi-private room, shared bathroom*	\$490
Single room, shared bathroom	\$684

There is a minimum stay of 5 weeks for this residence (minimum stay of two months for the single apartment, excluding June-Sept). Weekly rates are charged Sat-Sat or Sun-Sun regardless of weekday check-in/out.

There is an additional amenities fee of \$210 for all GEC Residences (excl. GEC King Edward \$357.50) (including tax), which is non-refundable.

*The semi-private room includes a divider between two beds, to create more privacy, but please note the divider has a gap at the top and bottom.

**Twin rooms will be two single beds or a bunk bed.

A security deposit of \$600 is required at the time of booking. It is returned after your departure, less any costs for damages or outstanding payments.

FACILITIES & AMENITIES



Free Wi-Fi



Weekly Clean



Reception



Onsite Laundry



Bedding/Linen
provided



CCTV



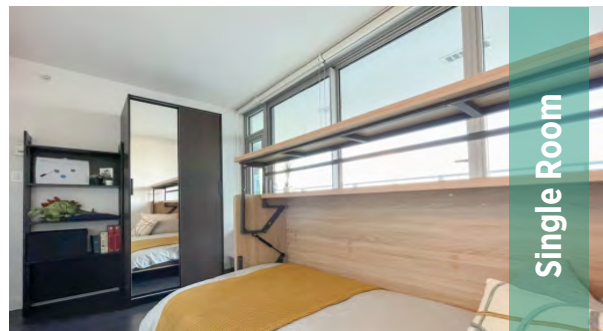
Gym

GEC Marine Gateway

8101 Nunavut Ln

Vancouver, BC V5X 0E3, Canada

Emergency phone: +1 604 831 4006



Single Room



Shared Kitchen

VANCOUVER Accommodation