



New York's
**MOST CAREER-INTENSIVE
UNIVERSITY**

WHY CHOOSE HOFSTRA UNIVERSITY?

New York City:

Top 10
Best Cities
for Young
Professionals
in America

Niche.com 2023

#3
World's
Best
Cities

Worldsbestcities.com 2023



FAST FACTS

Founded: **1935**

Campus: **Long Island, New York**

Campus size: **244 acres**

Enrollment: **10,238 students**

International students: **5%**

Countries represented: **90**

Bachelor's: **165**

Master's and PhD: **200**

#166 National University *U.S. News & World Report 2023*



#29

Best Undergraduate
Engineering Programs

U.S. News & World Report 2023



TOP 3%

of the nation's Best Schools for
Business Majors (for graduates with a bachelor's degree)

PayScale College Salary Report 2021-2022



#22

Most Popular Master's Degree Colleges
for Finance and Financial Management

College Factual 2022

**93% of Hofstra degree recipients are
employed, attending graduate school,
or both**

Undergraduate & Graduate Alumni Outcomes 2021-2022

**81% accepted job offers within three
months of graduation from Hofstra**

Undergraduate Alumni Outcomes 2021-2022

**The average undergraduate
class size is 21 students**

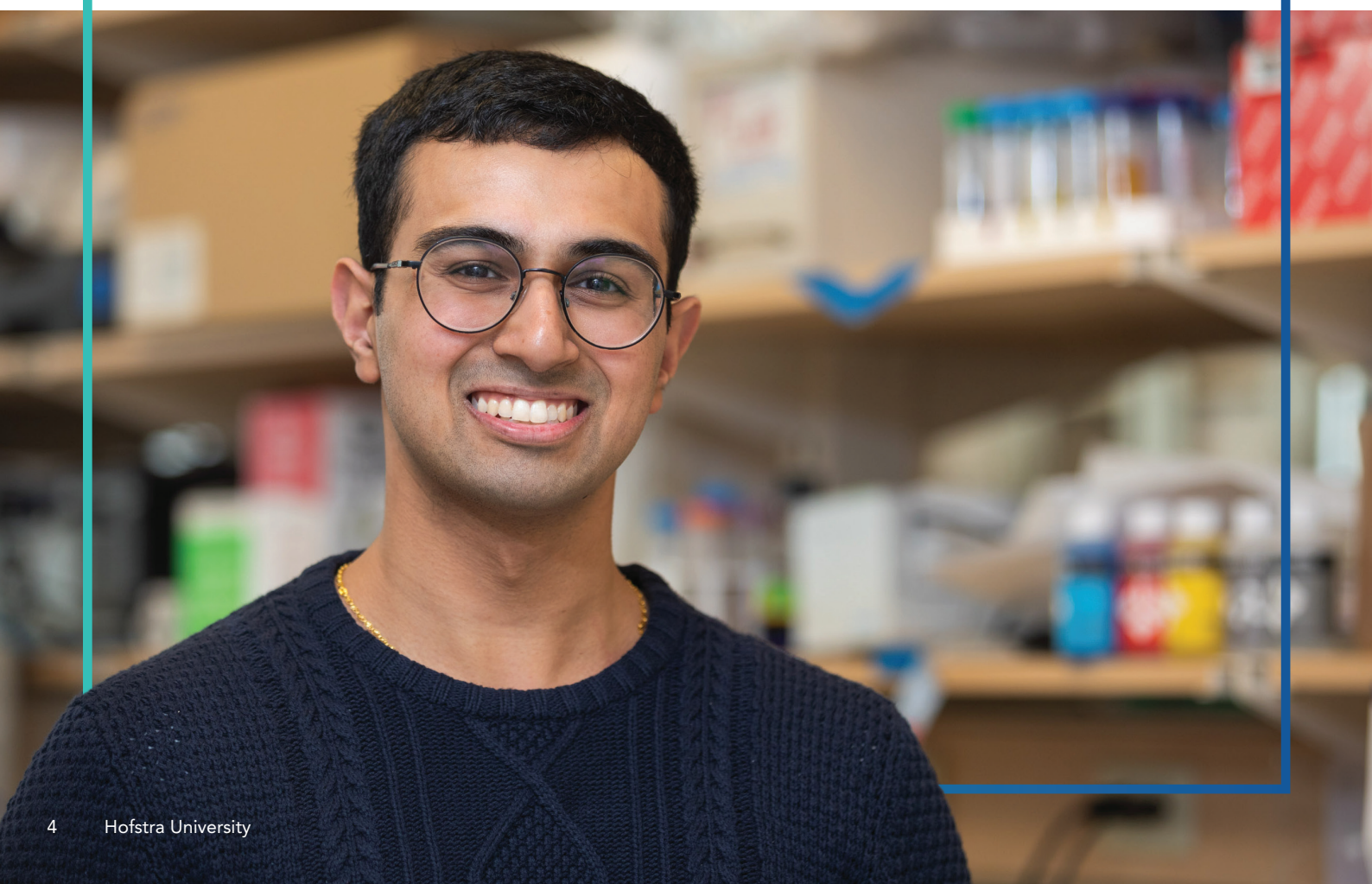
The student-faculty ratio is 13-to-1

**Top 7% of colleges and universities
nationwide for mid-career salary**

PayScale College Salary Report 2021-2022



Hofstra's career-driven curriculum



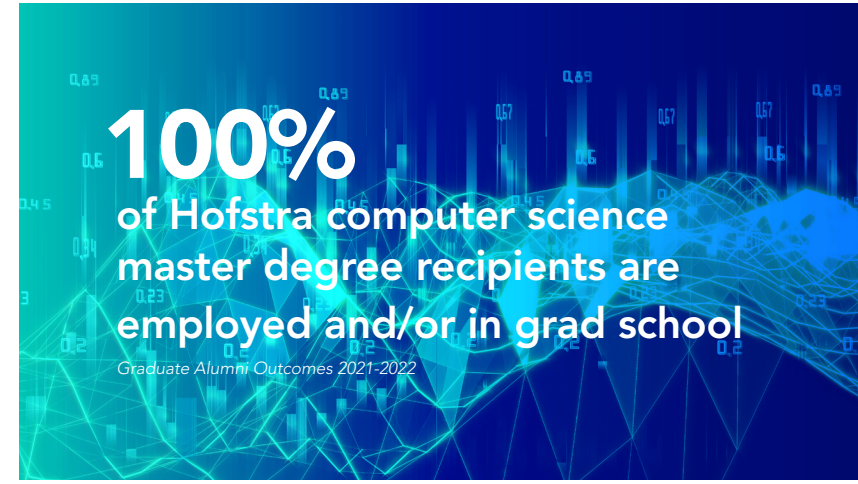
Preparing you for your career

- Interview with reporters who cover on-campus events of national interest, like the US presidential debates in the last three election cycles.
- Experience what your first job in engineering would be like with the co-op program, where you will complete a paid six-month experience.
- Work with top executives in each industry via Hofstra's faculty to build strong programs so you met the employment market needs.
- Gain the skill to write compelling content from Emmy Award-winning communications faculty.



\$109,000

average starting salary with a Hofstra computer science graduate degree Class of 2021-2022



"When I studied at Hofstra, it really helped me to increase my knowledge and experience. In my major, I luckily had an internship class, and I also got my internship experience during my master's degree. During my internship, I felt like it was a great opportunity for me to learn how to work in a practical working environment, but also to increase my experience on my résumé."

HALEY

Taiwan
MA in Industrial/Organizational Psychology
Participated in OPT as a Human Resource Coordinator



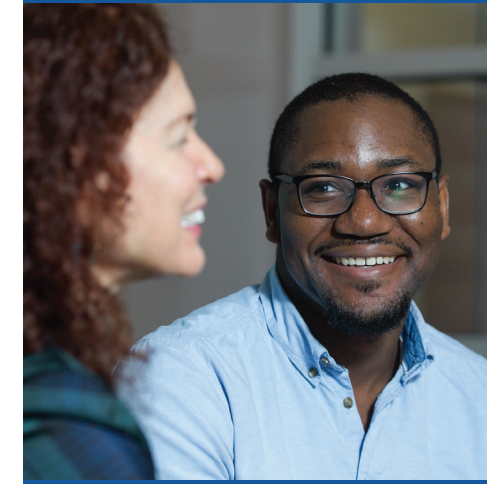
Watch Haley's story



Invest in your future

Hofstra students have interned at the following companies:

- ABC
- CBS
- Doctors Without Borders
- Goldman Sachs
- JPMorgan Chase & Co.
- KPMG
- NASA
- NBC
- PwC
- Sony
- Toyota
- Vogue Magazine
- The Walt Disney Company



Employers of Hofstra alumni

- Amazon
- Boeing
- Capital One
- ESPN
- Facebook
- Google
- IBM Corp
- Marvel Entertainment
- Morgan Stanley
- Northwell Health
- T-Mobile
- United Nations
- Warner Bros. Records
- Wells Fargo

CO-OP PROGRAMS

Opportunity through experiences



Engineering and Computer Science

Full-time paid work experience lasting six to eight months

- Complete a paid co-op experience at industry-leading corporations in New York City, on Long Island or nationwide. Hofstra's paid co-op program is six to eight months in duration.
- Undergraduate engineering and computer science students can begin the full-time co-op program after the first semester of their junior year. The program is also available for graduate-level computer science students.
- The co-op program has 200+ corporate partners including Canon, Estée Lauder, Gerber Technology, Google, GroupM, IBM, JFK Airport, Stantec, UPS, Veeco and Zebra.
- More than 80% of the students who have graduated from the program have received job offers from their co-op companies.



67% of Hofstra students had an internship

Among those who participated, on average, Hofstra students had **2.23** internships

Undergraduate Alumni Outcomes 2022-2023



Scan to learn more about Hofstra's MBA co-op



MBA

Full-time paid work experience for three to five months

- Complete a paid co-op experience with leading corporations in New York City and on Long Island. The program is three to five months in duration.
- Full-time co-op MBA corporate partners include CBS, Comedy Central, The Madison Square Garden Company, Northwell Health, Paramount, Peloton, PwC, Pharma Corp.
- About 70% of students land a full-time job with their co-op partner or with a competitor in that field.

"The Core Skills Lab and other learning facilities on campus are great and have helped me a lot in my studies. The technology and software that we use enhances my core skills, including communication, teamwork, initiative, adaptability and reasoning. The School of Business has several centers and facilities, such as the trading room, which have the latest software and are available for students to use throughout our studies."

NIMAY
India
MS in Business Analytics



Watch
Nimay's
story



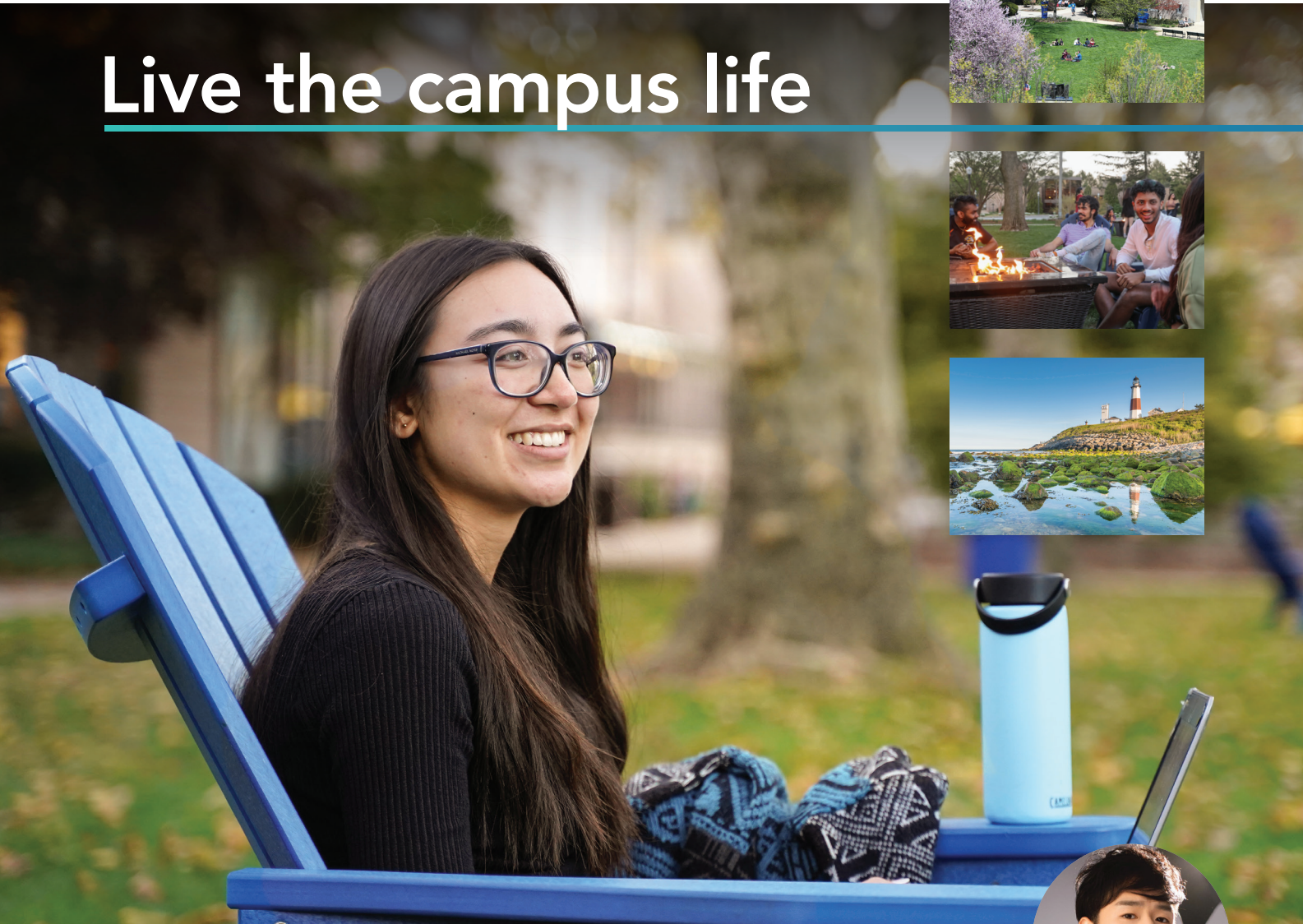
State-of-the-art facilities

Hofstra's computer science facilities continue to grow and advance, solidifying the commitment to academic excellence and practical learning experiences. Students are encouraged to engage in cutting-edge research projects, often in collaboration with faculty members and industry partners.

The Department of Computer Science includes laboratories like:

- Big Data Lab
- Cybersecurity Lab
- Gaming and Graphics Lab
- Research and Innovation Lab
- Systems, Networking and Security Lab

Live the campus life



By living right outside of New York City's hustle and bustle, you can focus on your studies in a calm, welcoming and cozy atmosphere. With 500+ on-campus events per year and 21 NCAA Division I teams, you'll find plenty of entertainment here. Easily walk to your classes and live in affordable on-campus housing. Explore a diverse community near spectacular beaches, historic landmarks and popular New York City boroughs like Brooklyn and Queens.

Things to do on Long Island, New York

- Enjoy the beaches from Long Beach to the glamorous Hamptons.
- Explore the 300-year-old Sunken Forest nearby Fire Island which features an untouched forest and a wide open beach.
- Visit the town where Jackson Pollock studied and museums like the Nassau County Museum of Art and the Parrish Art Museum in Water Mill.
- Eat freshly caught, local seafood on Shelter Island.
- Go shopping at the Roosevelt Field Mall, the largest indoor shopping mall on Long Island.

MICHAEL
China
MBA in Marketing

"I really enjoy Hofstra because it's a huge, diverse campus where you can connect with different people. At the same time, the school helps students with finding internships and jobs, and there's so many clubs to choose from."



Watch Michael's story

Distances from Hofstra University

- Jones Beach State Park - 16 km
- John F. Kennedy International Airport - 20 km
- Long Beach - 25 km
- LaGuardia Airport - 33 km
- Times Square - 45 km
- The Hamptons - 117 km

Experience the city lights



Places to go in New York City

- Take a walk through Central Park. It's a famous backdrop for many American movies with scenic trails, bike paths, concert venues and much more.
- Go to the top of the Empire State Building and the rooftop deck of 30 Rock for views of the city.
- Immerse yourself in New York City's vibrant Chinatown, a rich cultural experience filled with delicious cuisine, bustling markets and a tapestry of traditions.
- Explore the sights and flavors of New York City's India Street, where you can find authentic cuisines, discover unique shops and embrace Indian culture.
- Watch a baseball game with the Yankees or Mets and a basketball game with the Knicks or Nets. New York City Football Club has games at Yankee Stadium and Citi Field. If you're looking for something new, you can catch an American football game with the Jets or Giants.
- Channel your artistic side at MoMA (Museum of Modern Art) and The Met (The Metropolitan Museum of Art) in Manhattan.

Start your career in the big city

The state of New York has the most Fortune 500 company headquarters in the US (more than 50). You could start your career at one of the following headquarters:

American Express	Goldman Sachs Group	S&P Global
Estée Lauder	Nasdaq	Tiffany & Co.
E*Trade Financial	Pfizer	Viacom
Foot Locker	Ralph Lauren	Warner Bros. Records



LUISA
Brazil
BA in Film Studies and Production

"Being close to New York City is an advantage for Hofstra students because we have more career opportunities. For both internships and work experience, we get to work for big companies and get real experience in the field you're interested in."



Watch Luisa's story



CAREER-INTENSIVE PROGRAMS

The Frank G. Zarb School of Business

Get to work with America's business leaders

- **The Leo A. Guthart Hall for Innovation and Discovery:** The Frank G. Zarb School of Business boasts a 52,000-square-foot building.
- **Behavioral Science and Market Research Lab:** Study and research consumers' physical and physiological behavior with the latest technology to analyze their engagement process with a brand or a product.
- **Hofstra Digital Remedy Venture Challenge:** This annual entrepreneurship competition gives you the opportunity to create and pitch your own business plan.

Bring your ideas to life

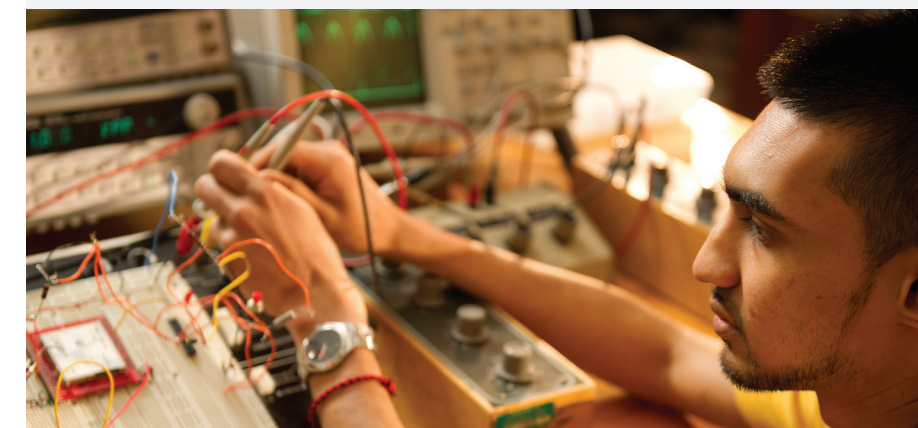
- **Institute of Innovation and Entrepreneurship ideaHUB:** Share your ideas at this business incubator, where you can collaborate with startup companies.
- **Student Managed Investment Fund:** Gain the same experiences as portfolio managers and security analysts by managing an investment pool of real money.
- **The Martin B. Greenberg Trading Room:** One of the largest academic trading rooms in the nation, identical to those used by leading financial institutions and equipped with 34 Bloomberg Professional terminals.



The Fred DeMatteis School of Engineering and Applied Science

Real tech experience for the real world

- **ASPiRe (Advanced Summer Program in Research):** Participate in a 10-week summer intensive program for students interested in pursuing a research project with faculty related to their major.
- **Center for Innovation:** Companies consult the Center for Innovation at Hofstra when they need help solving a technical or practical engineering problem.
- **Entrepreneurship in computing:** The Leadership and Innovation concentration is available to computer science students where you learn to identify innovative and entrepreneurial opportunities in computing. You will have a 10- to 13-week internship monitored by entrepreneurs with a local startup company.



Northwell partnership: Hofstra University has partnered with Northwell Health, New York state's largest healthcare provider and private employer, to establish and operate the Donald and Barbara Zucker School of Medicine at Hofstra/Northwell.

School of Health Professions and Human Services

- **Health Administration:** Develop and strengthen your communication and leadership skills to manage health services effectively and maximize the health status of diverse populations.
- **Health Informatics (STEM):** Develop information systems to manage patient healthcare information or help doctors create treatment plans.
- **Public Health:** Conduct scientific research or promote and protect the health of the community through education.



Academic programs

Find your degree. With a wide range of subject areas and admissions options, you can find the perfect degree for your chosen career. You can choose to apply for direct entry to the university or for a Pathway program that provides extra academic, language and cultural support. From the day you apply to the day you graduate, we are here to help you succeed every step of the way. Flip to the back cover to learn how to apply.

B = Bachelor's

M = Master's

GP = Graduate Pathway program that can lead to this degree is indicated in orange. This degree is also available through direct admission.

● This Hofstra University degree program is available through direct entry.

► Designated STEM degree by the U.S. Department of Homeland Security.

¹ STEM is not available for all concentrations

* Dual Bachelor's/Master's available

	B	M
HOFSTRA COLLEGE OF LIBERAL ARTS AND SCIENCES		
Africana Studies	GE	
Anthropology [BA options: Anthropology; Archaeology]	GE	
► Applied Physics [BS options: Biochemistry; Computer Science; Engineering]	GE	
Art	GE	
Art History	GE	
Asian Studies	GE	
► Biochemistry	NS	
► Biology [BA/BS options: Cell and Molecular Biology; Ecology and Evolution; Marine Biology; Pre-Medical, Pre-Dental and Pre-Veterinary Studies; Secondary Education] [MA options: Marine and Freshwater Biology; Cell and Molecular Biology]	●	●
► Chemistry	NS	
Chinese	GE	
Comparative Literature and Languages	GE	
Criminology	GE	
Dance	FP	
Drama	FP	
Early Childhood and Childhood Education	GE	●
► Economics* [BS options: Business Economics; Mathematical Business Economics] [BA options: Economics; Mathematical Economics] ¹	GE	
Educational Leadership: K-12 and Higher Education		●
English [BA options: English; Children's and Young Adult Literature; Creative Writing and Literature; Literatures in English; Publishing Studies and Literature]	GE	
Educational Technology		●
► Environmental Resources	NS	
Fine Arts [BA/BS options: Design; Painting; Sculpture-Industrial Design]	FP	
► Forensic Science	GE	
French and Francophone Studies	GE	
► Geographic Information Systems	GE	
Geography [BA options: Geography; Geographic Information Systems]	GE	
► Geology	NS	

International Year One

Indicates the International Year One program that should be taken to progress to an undergraduate academic program. This program is also available through direct admission.

BU Business

CO Communication

CS Computer Science

EN Engineering

GE General

**HE Health Science/
Exercise Science**

NS Natural Science

International Direct

All bachelor degree programs are available for direct admission or International Direct.

	B	M
German	GE	
Global Studies	GE	
Health and Physical Education		●
History	GE	
Italian	GE	
Japanese	GE	
Jewish Studies	GE	
Labor Studies*	GE	
Languages Other Than English and TESOL		GP
Latin American and Caribbean Studies	GE	
► Linguistics* ¹ [MA option: Forensic Linguistics]	GE	●
Literacy Studies [MA options: Literacy Studies (Birth-Grade 6) or (Grades 5-12)]		GP
Marriage and Family Therapy		●
► Mathematical Finance	GE	
► Mathematics* [BS options: Computer Science and Mathematics (Dual); Mathematics; Actuarial Science; Applied Mathematics; Chemistry; Engineering; Physics] [BA option: Mathematics]	GE	
► Medical Physics		●
Music [BA option: Music] [BS options: History/Literature; Jazz and Commercial Music; Music Business; Performance; Theory/Composition]	FP	
► Neuroscience	NS	
Philosophy	GE	
Physical Education	HE	
► Physics	NS	
Political Science	GE	
Pre-Health (Pre-Medical) Studies [Popular majors include: Biology; Biochemistry; Exercise Physiology; Health Science; Neuroscience; Psychology] [BS in Pre-Medical Studies] [BA in Pre-Medical or Pre-Health Studies with a Concentration in the Humanities or Social Sciences, including: Anthropology; Classics; Geography; Global Studies; Philosophy; Religion; Speech-Language-Hearing Sciences]	NS	
Psychology*	GE	
Public Policy and Public Service	GE	
Rhetoric and Public Advocacy [BA options: Health Communication; Political Communication]	GE	

	B	M
Russian and Post-Soviet Studies	GE	
Secondary Education [BSEd options: Dance Education; Fine Arts Education; Music Education] [BA options: English Education; French; German; Italian; Russian; Spanish; Mathematics; Biology; Chemistry; Earth Science; Physics; Social Studies] [MSEd options: English; Mathematics; Biology; Chemistry; Earth Science; Physics; Social Studies]	GE	●
Special Education [MSEd options: Secondary Special Education Generalist; Students with Disabilities Generalist with Extensions in Secondary Education]		●
Sociology	GE	
Spanish	GE	
Special Education and Early Childhood (birth-grade 2) Education (Inclusive)		●
Special Education and Elementary (grades 1-6) Education (Inclusive)		●
Special Education and Secondary (grades 7-12) Education (Inclusive)		●
STEM	GE	
► Sustainability		GP
► Sustainability Studies	GE	
Theater Arts	FP	
► Urban Ecology ¹		●
Women's Studies	GE	

SCHOOL OF HEALTH PROFESSIONS & HUMAN SERVICES		
Creative Arts Therapy Counseling		GP
Exercise Physiology	HE	
Health Administration		GP
► Health Informatics		GP
Health Professions Education		●
Health Science	HE	
Marriage and Family Therapy		●
Public Health		GP
Rehabilitation Counseling		●
Rehabilitation Counseling in Mental Health		●
School Counseling and Mental Health Counseling		●
Speech-Language-Hearing Sciences	●	
Sports Science		GP

FRANK G. ZARB SCHOOL OF BUSINESS		
► Business Administration/MBA [MBA Options: Business Analytics; Business Operations and Healthcare Analytics; Cybersecurity Management and Policy, Finance; Health Services Management; Information Systems; International Business; Management; Marketing; Sports & Entertainment Management]		GP
► Business Analytics	BU	GP
Entrepreneurship*	BU	
► Finance* ¹ [MS options: Financial and Risk Management; Investment Analysis]	BU	GP
International Business*	BU	
Management*	BU	
Marketing*	BU	GP
Supply Chain Management*	BU	

	B	M
THE LAWRENCE HERBERT SCHOOL OF COMMUNICATION		
Audio/Radio Production and Studies	CO	
Film Studies and Production	CO	
Filmmaking	CO	
Journalism* ² [BA options: Journalism; Sports Media]	CO	●
Mass Media Studies [BA options: Media and Culture; Media, Law, and Policy; Urban and Suburban Communication]	CO	
Public Relations	CO	GP
Television Production and Studies	CO	
Video/Television	CO	
Video/Television and Business	CO	
Video/Television and Film	CO	
Writing for the Screen	CO	

FRED DEMATTEIS SCHOOL OF ENGINEERING & APPLIED SCIENCE		
► Bioengineering [BS options: Bioelectricity; Biomechanics; Premedicine]	EN	
► Civil Engineering [BS options: Structural; Environmental]	EN	
► Computer Engineering [BS options: Computer Engineering; Gaming and Graphics; Leadership and Innovation in Computing; Medical Engineering; Networking and Cybersecurity; Web and Mobile Engineering]	EN	
► Computer Science and Cybersecurity	EN	
► Computer Science* [BA/BS options: Artificial Intelligence; Computer Science; Gaming and Graphics; Leadership and Innovation in Computing; Networking and Cybersecurity; Web and Mobile Engineering] [BS option: Computer Science and Mathematics (Dual)]	CS	GP
► Cybersecurity [MS/MBA options: Management and Policy; Technology]		GP
► Data Science		GP
► Electrical Engineering [BS options: Electrical Engineering; Computer Engineering]	EN	
► Engineering Management [MS options: Engineering Analytics; Leadership]		GP
► Engineering Science [BA options: Biomedical Engineering; Production and Manufacturing] [BE options: Biomedical Engineering; Biomechanics, Bioelectricity, Pre-medicine; Civil Engineering: Structural, Environmental]	EN	
► Industrial Engineering	EN	
► Mechanical Engineering [BS options: Aerospace Engineering; Mechanical Engineering]	EN	

MAURICE A. DEANE SCHOOL OF LAW		
American Legal Studies [LLM options: Business Law, International Law]		●
Family Law		●
Health Law		●

² Graduate programs require a TOEFL 90 or IELTS 7.0.



To learn more, look at the course catalog

www.intostudy.com/hofstra/programs

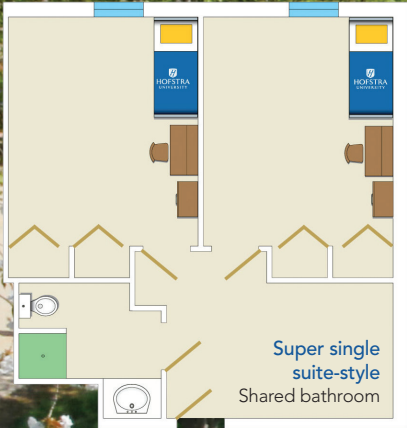
12

Hofstra University

Hofstra University

13

Housing and dining



A WORTHWHILE INVESTMENT

Hofstra University is in the top 16% for return on investment and best value

PayScale College ROI Report 2022

Estimated cost of attendance



Estimated annual tuition costs are as of Fall 2023. Please scan the QR code for the most up-to-date tuition and scholarship information.

On-campus housing

- Hofstra guarantees housing for your entire academic career. You'll always have space here to learn and be part of the community.
- Get to know other international students and live just steps away from campus events, the gym, the campus nutritionist and student organizations.

Dining at Hofstra

- Receive a standard dining plan if you choose to live on campus.
- Take your pick of 18 retail restaurant locations and a 24-hour dining service.
- Choose multicultural dining options available in the Student Center Cafe.

Campus transportation

- The shuttle bus stops by the residence halls and the route covers over 10 stops on campus. It also goes to the train station that will take you to New York City.
- The shopping shuttle, including a stop at Roosevelt Field Mall, is available for students every Wednesday and weekend.
- From 10 pm to 5 am, the night shuttle runs through the surrounding neighborhoods and takes you to your residence hall.
- There is free parking available on campus for students.



INTO Hofstra University

134 Hofstra University
100 Weller Hall
Hempstead, NY 11549-1340
USA

T: +1 516-463-6500
E: INTOHofstra@hofstra.edu
www.intostudy.com/hofstra

Virtual campus tour

Take a campus tour from home with
Hofstra's virtual tour at
www.youvisit.com/hofstra

Find us on:



facebook.com/intohofstra



instagram.com/intohofstra



twitter.com/intohofstra



myin.to/HofstraYouTube



WeChat



Youku

HOW TO APPLY

Choose from two easy ways to apply

1

Apply via your local
INTO educational counselor

2

Apply online
Complete our online application form:

www.intostudy.com/apply-hofstra



Through innovative partnerships with leading universities, we
expand opportunities for higher education, ensuring success and
transforming the lives of our students and staff.

Connect with us



Discover more online



For counselors:



For students:

Education counselor's stamp