



# Your on-campus home away from home

Immerse yourself in university life. Live alongside your classmates when you choose our modern, on-campus residences – just a 1-minute walk from your class.

Newcastle University International Study Centre accommodation offers safety, comfort and convenience. What's more, there's a range of options available to suit your needs and budget.

## City centre campus living

Our accommodation is located right in the heart of the university's city centre campus, which means you are close to class as well as nearby shops.

There are many other benefits including:



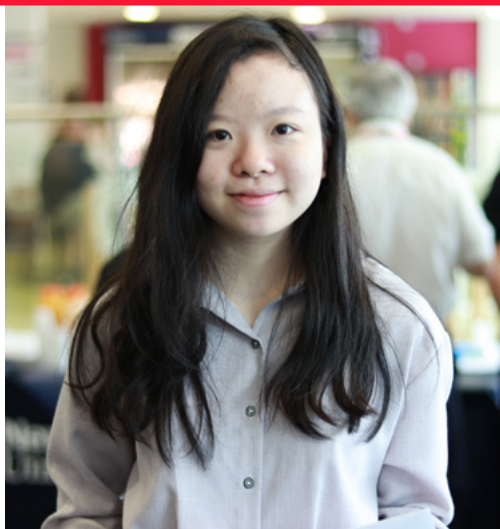
### Wellbeing support

Dedicated Support Services team to help you with any concerns.



### Medical care

Assistance if you're feeling unwell – from booking a medical visit or calling emergency line, we've got you covered.



**"I lived in the Joseph Cowen Halls of Residence, and my experience there was great. The staff were extremely helpful and there were lots of spaces for students to meet and socialise."**

Anjie, Indonesia

## Extra support for under 18s

- **Regular check-ins**  
From support staff and wardens.
- **Top security systems**  
Including night wardens who work on site.

See if your accommodation is really just a minute from class.

Watch the video



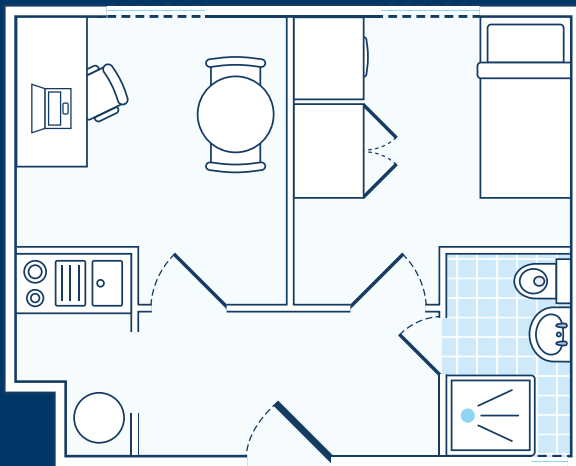


# What are my accommodation options?

## Platinum studio

**£265 per week\***

Enjoy more personal space in your luxury studio apartment designed for independent living, with a private study room, ensuite bathroom and a fully equipped kitchen unit.



Sample floor plan

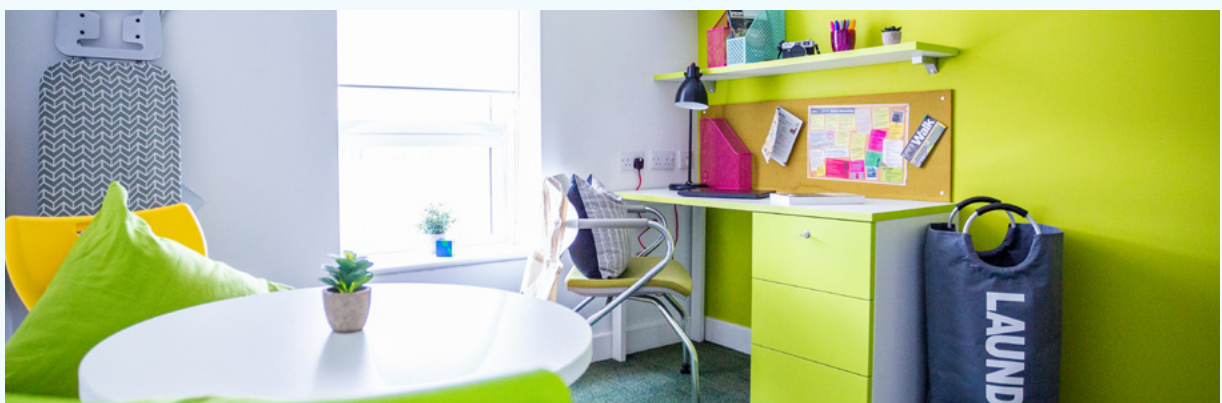
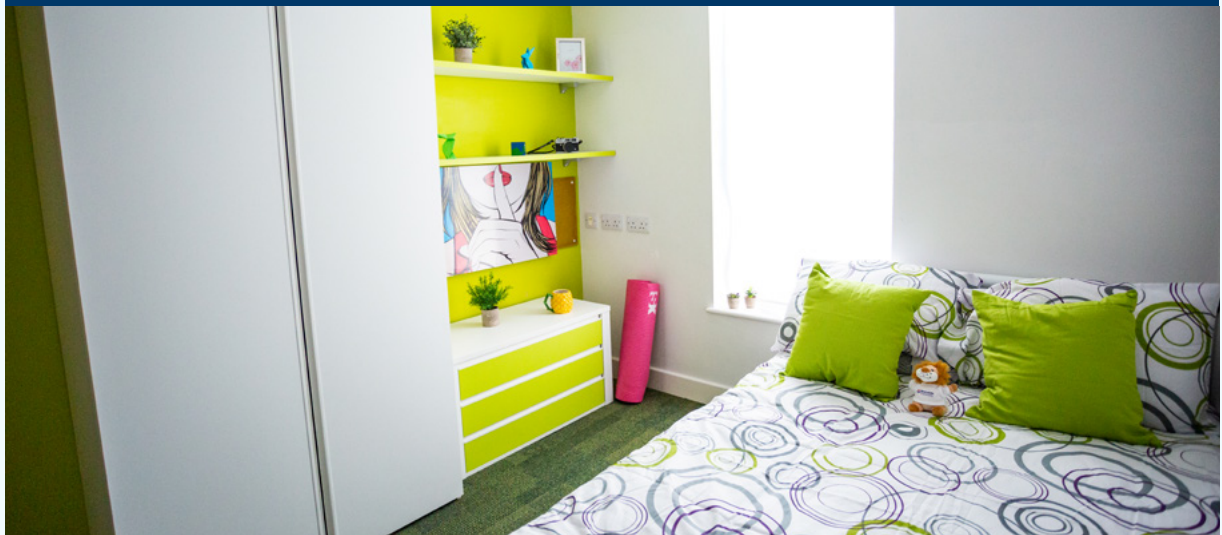
### Bedroom:

fully furnished with a bed, wardrobe, drawers and shelves.

### Private kitchen unit:

includes a sink and an integrated oven and hob, with a small dining area.

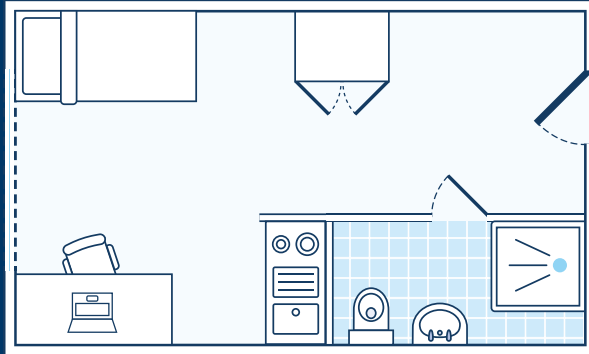
\* Prices are based on a 44-week contract starting in September 2025. You can also select different lengths of contract designed for your study dates.



# Gold studio

£246 per week\*

A completely self-contained study and living space, perfect for students who prefer independent living. You'll have an ensuite bathroom and cooking facilities just for you.



Sample floor plan

## Bedroom:

fully furnished with a bed, desk and chair, wardrobe, drawers and shelves.

## Private kitchenette:

includes a sink and an integrated oven and hob.

\* Prices are based on a 44-week contract starting in September 2025. You can also select different lengths of contract designed for your study dates.

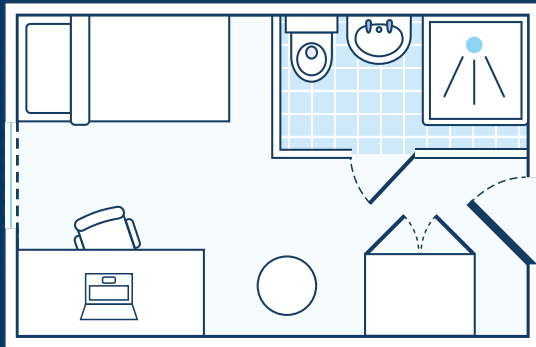




## Gold ensuite

**£200 per week\***

If you like to have a private study environment but still want to socialise, this room is perfect for you. You'll have an ensuite bedroom and access to a separate kitchen and social space shared with up to seven other students.



Sample floor plan

\* Prices are based on a 44-week contract starting in September 2025. You can also select different lengths of contract designed for your study dates.

### Bedroom:

fully furnished with a bed, desk and chair, wardrobe, drawers and shelves.

### Kitchen:

complete with sink, toaster, storage, kettle, fridge-freezer, and an integrated oven and hob with dining table and chairs.

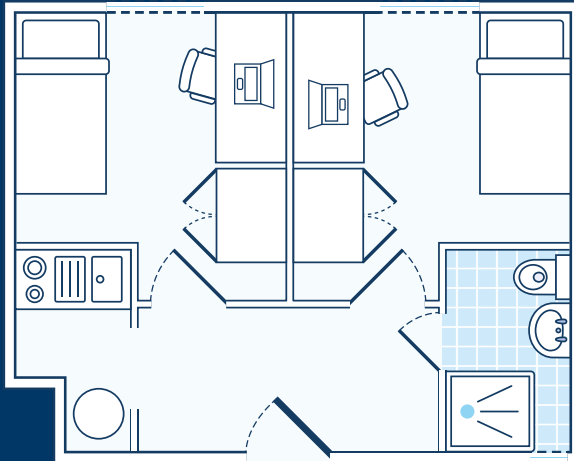




# Silver studio

£161 per week\*

Suited for those who enjoy living with a roommate, this shared studio has two separate bedroom units and a bathroom, kitchenette and living space for use between the two of you.



Sample floor plan

## Bedroom:

fully furnished room with a bed, desk and chair, wardrobe, drawers and shelves.

## Private kitchenette:

includes an integrated oven and hob.

\* Prices are based on a 44-week contract starting in September 2025. You can also select different lengths of contract designed for your study dates.



## What else is included?

### Utility bills

Electricity, gas, water, and high-speed internet are all included at no extra cost.

### Communal areas

Hang out or study with your friends in shared study and social areas. Enjoy your free time in the movie and game rooms.

### Campus facilities

Everything you need is on campus and just steps away from your accommodation – from the fitness centre and multi-faith prayer spaces to restaurants and supermarkets. Collect letters from your mailbox and wash your clothes in laundry facilities.

	Platinum Studio	Gold Studio	Gold Ensuite	Silver Studio
Weekly cost*	From £265	From £246	From £200	From £161
Walk to centre	1 minute	1 minute	1 minute	1 minute
Shared bathroom				✓
Shared kitchen			✓	✓
Communal areas	✓	✓	✓	✓
24/7 helpline all year round	✓	✓	✓	✓
Free Wi-Fi	✓	✓	✓	✓
Inclusion of utility bills	✓	✓	✓	✓
Laundry facilities	✓	✓	✓	✓

\* Prices are based on a 44-week contract starting in September 2025.  
You can also select different lengths of contract designed for your study dates.

# Your comfort zone on campus

Take your study experience to the next level in a modern residence designed with you in mind. Live, study and make lifelong friendships – all in the heart of Newcastle University's city centre campus.





# Your most-asked questions, answered

## When can I arrive at my accommodation?

The Accommodation team will contact you before the arrivals period with details on how to book your arrival slot.

## Can my friends or family stay with me?

If someone helps you move into your accommodation, they'll need to book a room at a hotel nearby. Friends and family can't stay in your room.

## What will my address be?

You'll receive your address when your accommodation is confirmed. However, you'll only receive your specific room number and your door key when you arrive at your accommodation.

## Can I get food delivered?

Delivering food and grocery items are welcomed. Order groceries and household items online at supermarkets such as Tesco. Or order takeaway food via Uber Eats, Deliveroo or Just Eat.

Look around your accommodation options  
[nclisc.com/accommodation](https://nclisc.com/accommodation)

Want to know more?

Contact us



Ready to book your accommodation?  
**Contact your education counsellor.**

