



Oregon State
University

THE WEST COAST'S *most* VALUABLE DEGREE

Guide for
international students



The West Coast's MOST VALUABLE DEGREE

CAREER OUTCOMES

**OSU GRADUATES EARN
\$20,000
MORE PER YEAR**
than the average salary of
graduates from other US higher
education institutions

*U.S. Department of Education College
Scorecard 2024*

WEST COAST LOCATION

900+
students on OPT
in the last three years
with 66% employed
on the West Coast

University Data 2025

RESEARCH AND INNOVATION



**NEARLY HALF A
BILLION DOLLARS**
in research funding every year

University Data 2024

\$2.4M

additional lifetime earnings

*Earnings are estimated and not guaranteed. Actual pay
depends on many factors like degree level, major and location
(adjusted for inflation).

TOP 20%

BEST PAID GRADUATES IN THE US

Payscale Salary Report 2024

FAST FACTS

Founded: **1868**
Main campus: **Corvallis, Oregon**
City population: **59,000+**
Campus size: **400 acres**
Enrollment (Corvallis campus): **24,188**
International students: **2,500+**
Countries represented: **112**
Bachelor's: **200+**
Master's/PhD: **80+**
Additional campuses:
**OSU-Cascades (Bend, Oregon) and
OSU Ecampus (online)**

Welcome to OREGON STATE UNIVERSITY

where the world's biggest problems find their solutions. As a mid-priced, high-value university, Oregon State is an investment in your future with proven returns. No matter what you study, you'll end your time here having earned the West Coast's most valuable degree.



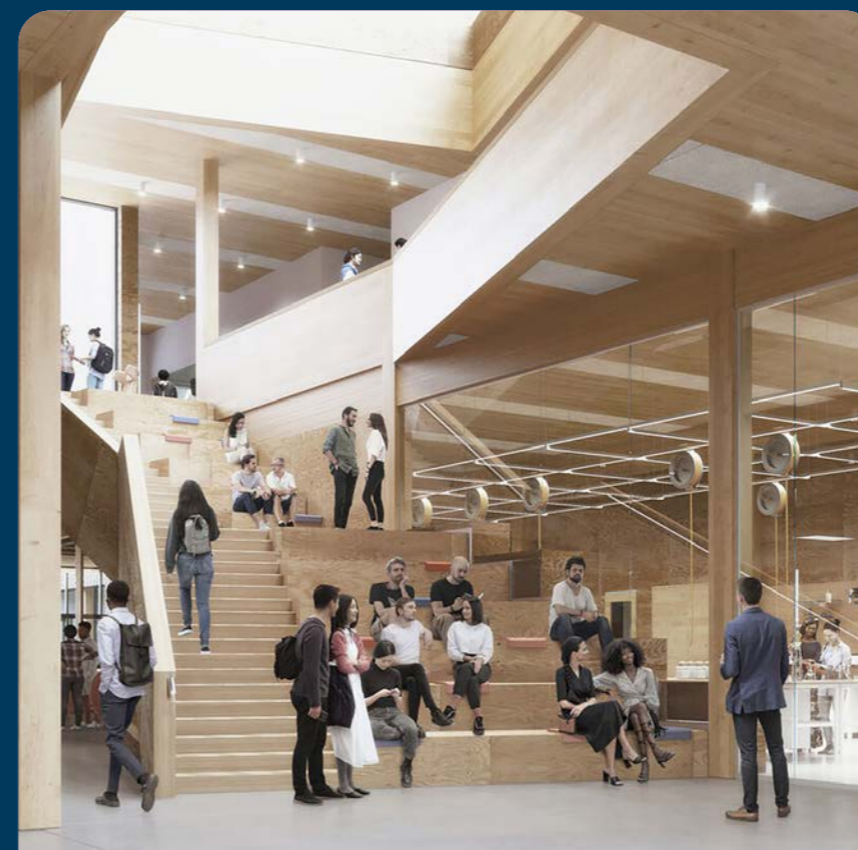
“
As President of Oregon State University, I'm proud to lead an institution that is working to find solutions to some of the world's most challenging issues. As someone who came to the US for the first time as an international student, I am excited about what we can achieve together by bringing the most promising, committed and engaged international students to Oregon State University.

Dr. Jayathi Y Murthy
President of Oregon State University



POWERING UP THE HUANG COLLABORATIVE INNOVATION COMPLEX

Hosting one of the most powerful supercomputers in any university in the US, the Huang Collaborative Innovation Complex will advance research and learning in artificial intelligence, robotics and materials science. No matter what your major, you'll be equipped for the jobs of the future.



TOP 1.4%

Global University
Center for World University Rankings 2024

One

of the Top Universities for
Fighting Climate Change

Great Value Colleges 2025

#16

Best Colleges for Environmental
Science in America

Niche 2024

#38

Most Innovative School
in the US

U.S. News & World Report 2024

#66

Best Undergraduate
Engineering School

U.S. News & World Report 2025

#64

Graduate Computer Science

U.S. News & World Report 2025

#91

US university

Center for World University Ranking 2024

Listed in
**Best Fashion
Schools** in the US

Vogue 2024

OUR GRADS GO PLACES



Daniel | Brazil

Industrial Engineering, Class of 2018

Intel

(Semiconductor technology company)

"[My engineering background from Oregon State] opened up a lot of doors for me and one of the doors that it opened was Intel."



See Daniel's story



Purnima | India

Industrial Engineering, Class of 2023

Tesla

(Electric vehicle manufacturer)

"Tesla was always my dream company and landing an internship there was a big deal for me."



See Purnima's story



Jen-Hsun Huang

Taiwan

President and CEO of NVIDIA, OSU Alum

"There's no question that [artificial] intelligence is the single most valuable resource that humanity knows. Its impact to every industry can be very profound. This is the best of times to go to school. I'm glad that you guys have chosen to come to Oregon State University which is at the epicenter of some of the most important areas of scientific breakthroughs."

(Oregon State University AI Week 2024)



Leo | Taiwan

Electrical and Computer Engineering, Class of 2020

Expedia

(Travel booking platform)



Renee | Kenya

Electrical and Computer Engineering, Class of 2023

Daimler Truck North America

(Commercial vehicle manufacturer)



Alisha | Kazakhstan

Civil Engineering, Class of 2022

WSP

(Engineering firm)

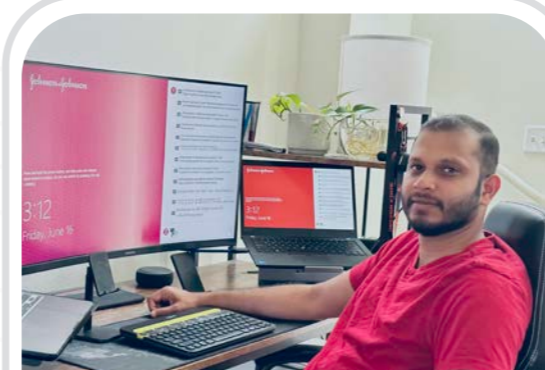


Jeen | Thailand

Mechanical Engineering, Class of 2023

Daimler Truck North America

(Commercial vehicle manufacturer)



Sreesh | India

Business, Class of 2023

Johnson & Johnson

(Global healthcare company)



Vania | Indonesia

Chemical Engineering, Class of 2021

BillionToOne

(Biotechnology company)

West Coast CONNECTIONS

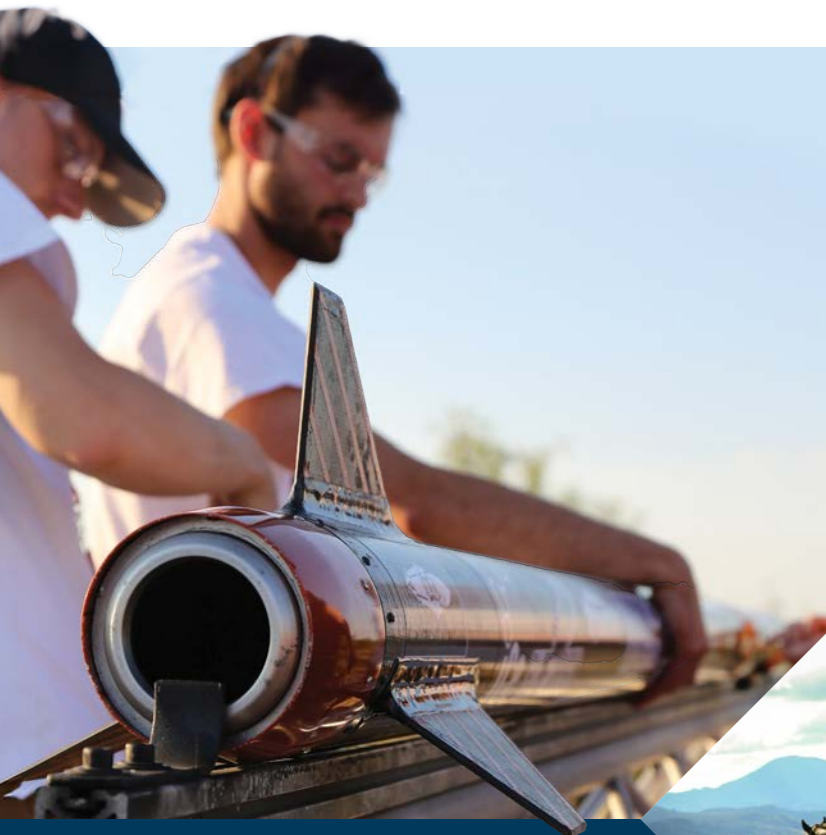
From Silicon Valley to Seattle, the West Coast is home to some of the world's most successful and impactful companies. Located in the heartland of US innovation, we have close ties to industries both on the West Coast and throughout the country.

NVIDIA, Intel, Amazon, Apple, Google, HP, Meta, Microsoft, Nike and Tesla were all founded on the West Coast – and all recruit directly from Oregon State.

Portland and Seattle are both ranked in the **top 20** best places to start a career.
WalletHub 2023

The West Coast is known for its **mild climate, incredible natural beauty and friendly, welcoming people.**

7 of the 10 most sustainable cities in the US are on the West Coast.
Rocket Homes 2023



Internships DRIVEN BY INDUSTRY

We partner with companies to give students hands-on experiences that translate into job offers and impressive career outcomes. With hundreds of company partners, students can find internships for all of our programs.



Earn up to **\$50,000**

through internships with our corporate partners



Gain a year of work experience before graduating from Oregon State



Experience OREGON

Corvallis, Oregon

SAFE

Ranked as one of the safest cities in Oregon in 2023 by *Travel Safe - Abroad*, Corvallis is a vibrant university town built to support students. Corvallis also enjoys a moderate climate with comfortable weather.

SMART

According to *24/7 Wall Street 2022*, Corvallis is the third most educated city in the US, making it a great place to start a business or launch your career.

GREEN

Whether it's the free public transportation, abundance of bike paths or focus on renewable energy, Corvallis cares about the environment and is playing its role in reducing its carbon footprint.

Travel times by car from Corvallis

- 45 minutes to the Pacific Ocean
- 90 minutes to Portland
- 5 minutes to HP Research Campus



OSU-Cascades campus

Our second physical campus is located in Bend, Oregon, a nationally recognized technology and recreation hub for the US. The campus offers over 30 undergraduate degrees, minors and other options, including two campus-specific majors and specialized internship opportunities.



OREGON FAST FACTS

- No sales tax
- Filled with mountains, hiking trails, forests and rivers
- Home to the “Silicon Forest,” a major hub of hundreds of high-tech companies
- **#2** Best College Towns in America
Best Colleges 2023
- **#4** Greenest State in the US
ConsumerAffairs 2024

The West Coast's most valuable **UNDERGRADUATE DEGREE**

Experiences that stand out

As an international student, you'll receive one-on-one support from the moment you apply through graduation and beyond

An investment you can count on

- First-year retention rate of 95% for international students, 30 points higher than the average for US universities
- Average GPA of 3.4 for undergraduate first-year students
- Up to 22 credits applicable toward a master's program

Admissions made easy

- Streamlined application (grades and an English test) for all programs and scholarships
- Application to offer in four days or less
- 24/7 support from center and global staff for applications, housing, arrival and post-arrival inquiries

VIP support (with no additional cost) from start to finish

- Priority registration for classes
- Individual, customized support from advisors and professors
- Tutoring tailored to international students
- Airport pickup and visa support

Honors College

Our Honors College is an opportunity for outstanding students to earn our most prestigious undergraduate degree, the Honors Baccalaureate degree. All international students admitted to the Honors College will be awarded an additional scholarship. Over the four years, students prepare for and conduct an Honors College thesis supervised by a faculty member. This can be seen as a fast track to graduate study in the US. During their time at Oregon State, Honors College students have access to:

- 350+ additional course options
- unique honors classes, typically 25 students or less
- exclusive student spaces and support
- Honors College advising and mentorship

"The multitude of opportunities, such as internships, study abroad programs and undergraduate research projects [available in the Honor's College] lured me in, pulling me towards a path that promoted my growth as a student and as an individual."

Varsha
India
BS in Biology

Research with real results

As an undergraduate student, you'll have the opportunity to participate in major research projects addressing real-world problems working alongside professors and other leaders in their field.

Mei, a Japanese undergraduate business analytics student, participated in a joint study, analyzing pharmaceutical companies' data alongside supply chain management experts. This hands-on research provided Mei with valuable first hand experience in her field.

"I think there are a lot of benefits to engaging in research while we're undergraduate students. First of all, you can deepen your knowledge of your field by being exposed to real-life research situations and you will be able to expand your insights for your postgraduate career and the rest of your college life."

Mei
Japan
BS in Business Analytics

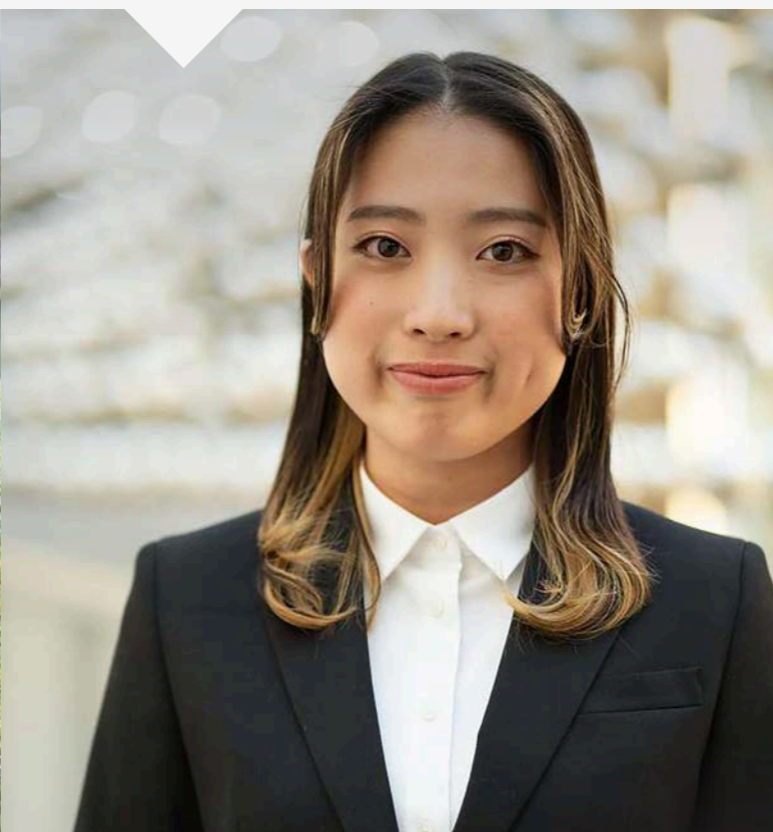
Every business student becomes a business owner

All undergraduate business majors participate in the First-Year Experience, where the university provides you the financing to start and run your own business. This gives you the chance to make real-world decisions about marketing, finances, administration and product design. These experiences are critical in preparing for competitive jobs and internships.



100%

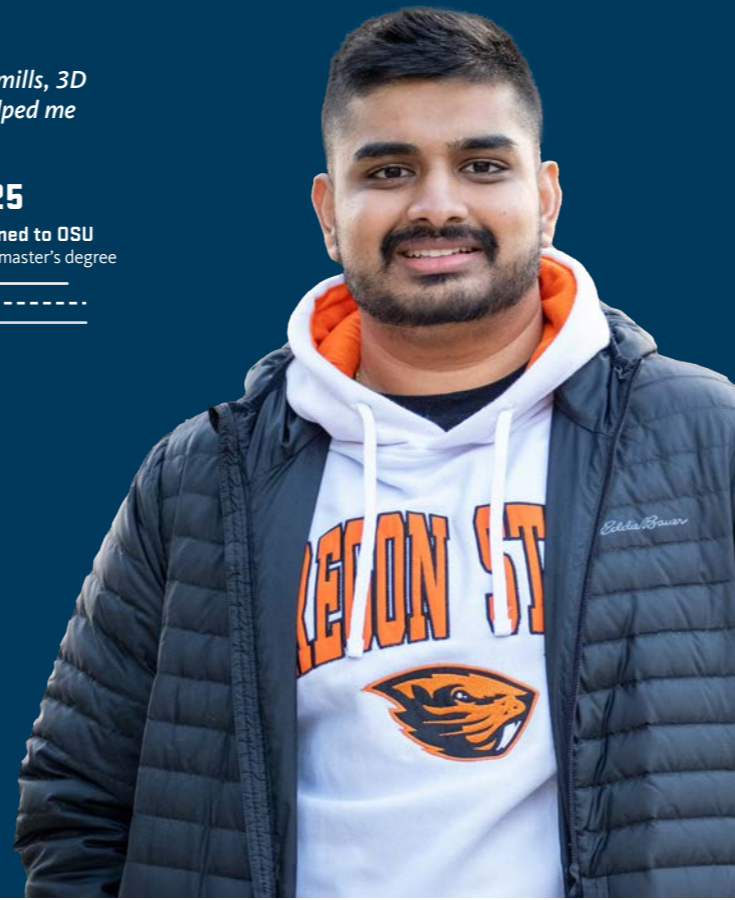
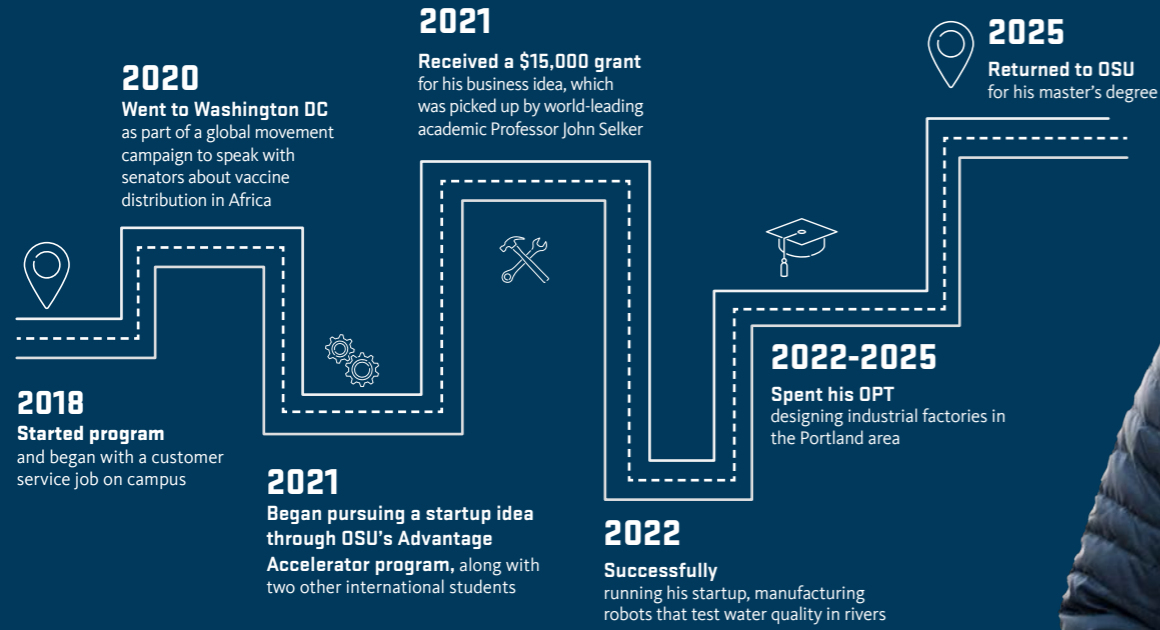
of international students get career support and résumé development opportunities



STUDENT JOURNEY

Nikhil, India and Kenya | Class of 2022
Mechanical and manufacturing engineering double major

“The facilities at OSU have helped me get hands on experience with a lot of machines such as lathes, mills, 3D printers and laser cutters. My involvement in the current job I have as a mechanical engineer has helped me develop the practical skills I learned in class.”



The West Coast's most valuable GRADUATE DEGREE

GRADUATE PROGRAM SPOTLIGHTS

- Work with corporate partners to solve real-world problems.
- Develop global solutions at a Tier 1 research university.
- Receive academic and personal support designed for international students.
- Graduate in 1.5 years and land a job with top companies.



Engineering

- Over 10 fields all ranked in the **top 100** by *U.S. News & World Report 2025*.
- Complete a 1.5-year program and become eligible for three years of OPT.
- Network with companies through our MECOP internship program.



Computer Science

- **Largest computer science program** in the nation. *University Data 2024*
- Specializations in AI, cybersecurity, data science, robotics and networking.
- Join the HP and OSU partnership and work with faculty to research technologies and materials.



Business Analytics

- **Our STEM-designated** business program qualifies for three years of OPT eligibility.
- You can study concentrations in finance, supply chain or marketing insights.
- Get involved in research with major industries through our Center for Business Analytics and Applied AI.



Our signature areas OF RESEARCH

As a **Carnegie Tier 1 Research University** with nearly half a billion dollars invested in research each year, you'll find plenty of opportunities to participate in groundbreaking research in our state-of-the-art facilities.

We are one of only three universities in the US with **Land, Sea, Space and Sun Grant** designations, meaning notable research is conducted in all four areas.

Artificial Intelligence and Robotics

Through a **\$50 million** donation from NVIDIA's Jen-Hsun Huang, we'll be among the few US universities to host AI systems locally on the third most powerful computer nationwide.

Clean Energy Technology

Our fully functioning test site generates energy from waves and tides, a technology with the potential to cleanly power up to 2/3 of the US energy needs.

Integrated Health and Biotechnology

Our researchers are studying human genomics, phytochemicals and innovative therapies to combat cancer, heart disease and diabetes.

Climate Science and Sustainability

At the Human and Ecosystem Resilience and Sustainability Lab, students and faculty advance, apply and facilitate global, national and regional research on sustainable and resilient human communities and ecosystems.

Admission ROUTES

Your path to a US degree starts here. We offer various admission routes to fit your academic journey. Explore your options below.

How do I qualify?

Please refer to the entry requirements to see which admission route is a good match.

How will I be admitted?

You will be admitted either through Pathway admission or Degree admission. Pathway admission provides a Pathway I-20. Degree admission provides a Degree-seeking I-20

What's included?

We offer a variety of support services. Please see the chart below for more details.

Graduate

<p>TOEFL: 91 (18 minimum subscores) GPA: 3.0 IELTS: 7.0 Duolingo: 130 (must include subscores)</p> <p>Degree admission</p> <p>DIRECT ENTRY (thesis based)</p> <ul style="list-style-type: none"> I-20: Degree seeking Curriculum: University courses University resources Graduate on time 	<p>TOEFL: 80 (18 subscores) GPA: 3.0 IELTS: 6.5 (5.5 subscores) Duolingo: 110</p> <p>Degree admission</p> <p>MASTER'S INTERNATIONAL DIRECT (non-thesis)</p> <ul style="list-style-type: none"> I-20: Degree seeking Curriculum: University courses and success skills courses University resources Customized cultural support included in tuition Personalized academic support included in tuition On-campus international student center Scholarships and guaranteed awards may be available Graduate on time 	<p>TOEFL: 70-85 (16 subscores) GPA: 2.5-3.0 IELTS: 6.0-6.5 (5.5-6.0 subscores) Duolingo: 95-120</p> <p>Pathway admission</p> <p>GRADUATE PATHWAY</p> <ul style="list-style-type: none"> I-20: Pathway Curriculum: University courses and prerequisite or English language courses University resources Customized cultural support included in tuition Personalized academic support included in tuition On-campus international student center Scholarships and guaranteed awards may be available Graduate on time
--	--	--

Ready to learn more?

Scan the QR code to learn more about our graduate admission routes.



Undergraduate

<p>GPA: 3.0 TOEFL: 70 IELTS: 6.0 Duolingo: 100</p> <p>Degree admission</p> <p>INTERNATIONAL DIRECT</p> <ul style="list-style-type: none"> I-20: Degree seeking Curriculum: University courses and success skills courses University resources Customized cultural support included in tuition Personalized academic support included in tuition On-campus international student center Scholarships and guaranteed awards may be available Graduate on time 	<p>GPA: 2.5 TOEFL: 50-60 IELTS: 5.0-5.5 Duolingo: 75-90</p> <p>Pathway admission</p> <p>INTERNATIONAL YEAR ONE</p> <ul style="list-style-type: none"> I-20: Pathway Curriculum: University courses, additional academic and language support University resources Customized cultural support included in tuition Personalized academic support included in tuition On-campus international student center Scholarships and guaranteed awards may be available Graduate on time
---	---

Ready to learn more?

Scan the QR code to learn more about our undergraduate admission routes.



Transfer

<p>GPA: 2.25-2.5 TOEFL: 80 (16 subscores) IELTS: 6.5 Duolingo: 110</p> <p>Degree admission</p> <p>INTERNATIONAL DIRECT TRANSFER</p> <ul style="list-style-type: none"> I-20: Degree seeking Curriculum: University courses University resources Customized cultural support included in tuition Personalized academic support included in tuition On-campus international student center Scholarships and guaranteed awards may be available Graduate on time Pre-arrival transferable credit evaluation 	<p>GPA: 2.25 TOEFL: 50-75 IELTS: 5.0-6.0 Duolingo: 75-110</p> <p>Pathway admission</p> <p>UNDERGRADUATE TRANSFER</p> <ul style="list-style-type: none"> I-20: Pathway Curriculum: University courses, additional academic and language support University resources Customized cultural support included in tuition Personalized academic support included in tuition On-campus international student center Scholarships and guaranteed awards may be available Graduate on time Pre-arrival transferable credit evaluation
---	---

Ready to learn more?

Scan the QR code to learn more about our transfer admission routes.



Experience CAMPUS LIFE

- Over 400 clubs, societies and organizations, including sororities and fraternities, service projects and professional organizations.
- 40+ intramural and club sports teams for competition at every level.
- Facilities inclusive of different faiths, including prayer spaces, dietary accommodations and foot washing stations.
- Recreation centers with gyms, fields, tracks, rock climbing walls, pools, weight rooms and more.



Dining

The Corvallis campus has 18 dining centers, in addition to a number of cafés and five grocery stores across campus. Whether you're in the mood for a nutritious meal or a tasty treat, you'll be sure to find it here, with offerings in Italian, Asian, Mexican and classic American fare, as well as delis, coffee houses and more.

On-campus dining also accommodates a variety of dietary needs, including halal, gluten-free, allergen-free, vegetarian and vegan options.

Living on campus

Student type	REQUIRED	NOT REQUIRED
Academic English (AE)		•
International Year One (IYO)/AE + IYO	•*	
Undergraduate first-year students/AE + UG first-year	•*	
Undergraduate Transfer Program (UTP)/AE + UTP	•*	
Master's International Direct (MID)		•
Graduate Pathway (GPW)/AE + GPW		•

*Students more than one year past High school graduation are not required to live on campus.



Bedroom layout

Funding your FUTURE

Jump Start Employment Program

Secure an on-campus job before leaving your home country and earn up to

\$16,000+

per year at one of Oregon State's thousands of student jobs.

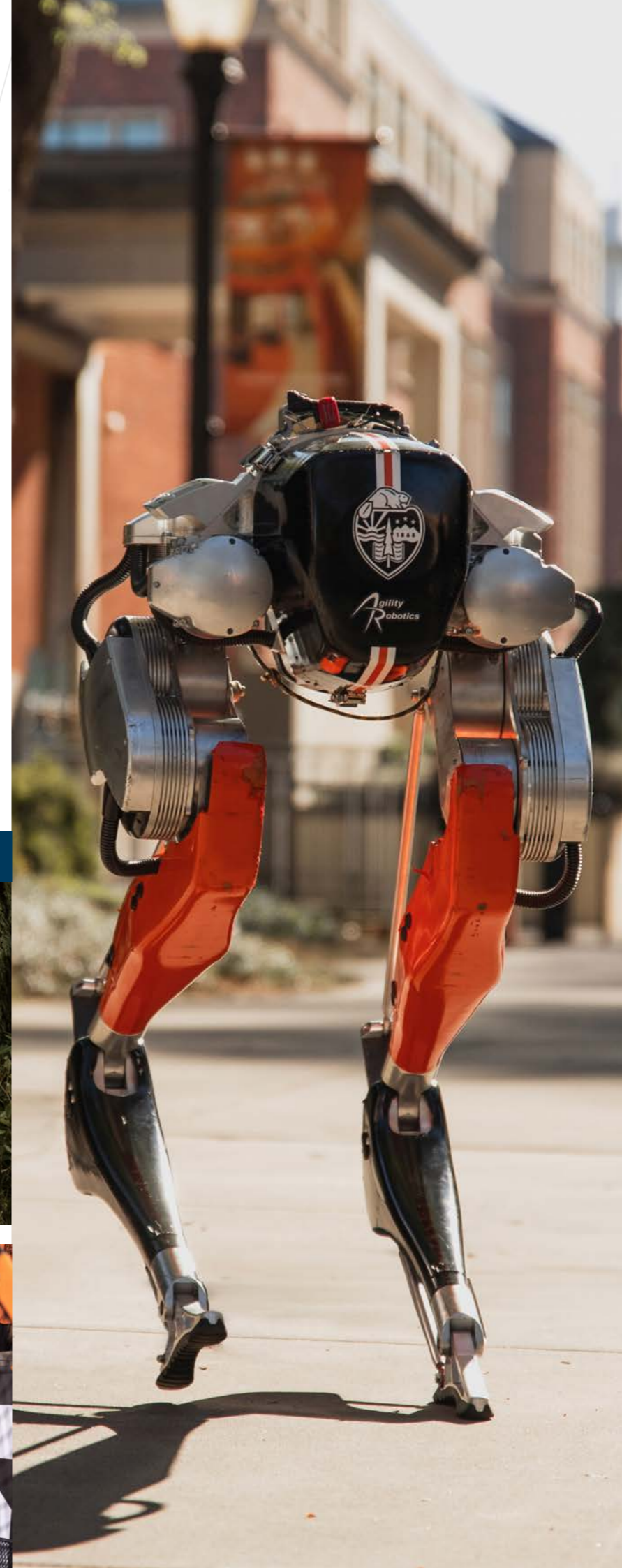
Scholarships and awards up to

\$64,000

Estimated cost
of attendance



Please scan the QR code for the most up-to-date tuition and scholarship information.





Oregon State University
1701 SW Western Boulevard
Corvallis, OR 97331
USA

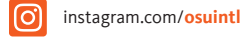
T: +1 541 737 2464
E: intladmit@oregonstate.edu

oregonstateintl.com

YOUVISIT VIRTUAL TOUR
www.youvisit.com/tour/oregonstate



Find us on:



HOW TO APPLY

Choose from two easy ways to apply

- 1 Apply via your local educational counselor
- 2 Apply online
Complete our online application form:
oregonstateintl.com

For more information on International Admissions, scan here:



IN PARTNERSHIP WITH



Through innovative partnerships with leading universities, we expand opportunities for higher education, ensuring success and transforming the lives of our students and staff.

Education counselor's stamp