



# Find your home at Lancaster

**Nine colleges. Nine inclusive communities. One home away from home.**

From the moment you arrive on campus, Lancaster's unique collegiate system will be central to your student experience. Each college is a close-knit community where you'll live, socialise, join sports teams and find additional support.

**Discover our colleges**



Bowland College



Cartmel College



The County College



Furness College



Fylde College



Graduate College



Grizedale College



Lonsdale College



Pendle College





# What are my accommodation options?

While your college is home, you can choose the type of room you want to live in.

## Extra support for under 18s

Students under the age of 18 benefit from enhanced support at their accommodation.

**Routine check-ins** from centre support staff.

**On-site security and porters** available 24 hours a day in each of the nine colleges.

Start finding your ideal home away from home.

[Explore your choices](#)



## Bedroom with ensuite bathroom

You'll have your own private ensuite study bedroom with a kitchen that you'll share with up to seven students. All students aged under 18 must apply for this room type but those 18 and older can also book them.



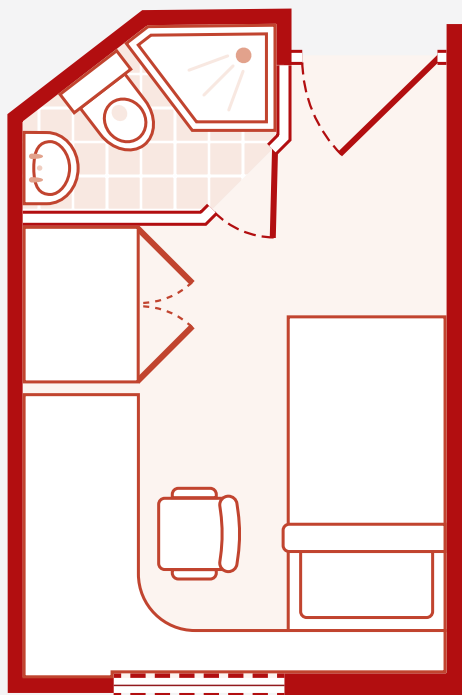
**From £194 per week\***

### **Bedroom:**

Fully furnished with a single bed, desk, chair, wardrobe and bookshelves.

### **Kitchen:**

Includes a cupboard, fridge-freezer, cooker and microwave, kettle and toaster.



\* Typical cost based on a three-term academic programme starting in September 2025, on a 40-week contract. Price may differ depending on the college chosen. The length of your accommodation contract will depend upon your course start and end dates, ensuring that you don't pay for unnecessary weeks.

## Bedroom with shared bathroom

You'll have your own private single bedroom with a bathroom shared by up to six students. The kitchen will be shared by up to 12 students.



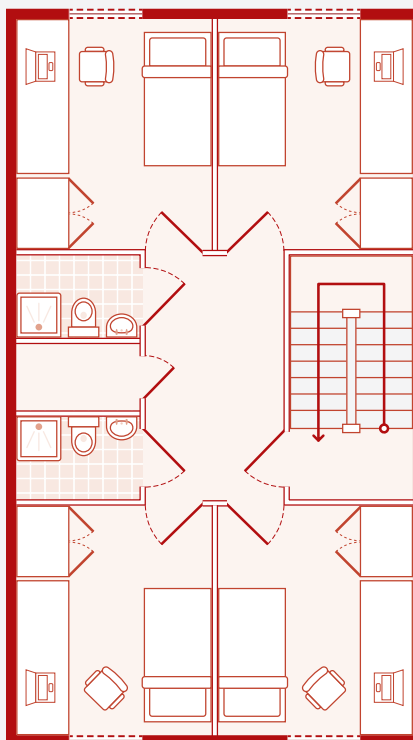
**From £132 per week\***

### Bedroom:

Fully furnished with a bed (with under-bed storage), desk and chair, wardrobe, drawers and shelves.

### Kitchen:

Includes a cupboard storage space, fridge-freezer, cooker and microwave, kettle and toaster.



\* Typical cost based on a three-term academic programme starting in September 2025, on a 40-week contract. Price may differ depending on the college chosen. The length of your accommodation contract will depend upon your course start and end dates, ensuring that you don't pay for unnecessary weeks.



## Self-contained studio

For students who want a little more independence, the studios provide a private single bedroom with an ensuite bathroom and kitchenette. There are no communal areas in these buildings, making them better suited to students that have already formed friendship groups.



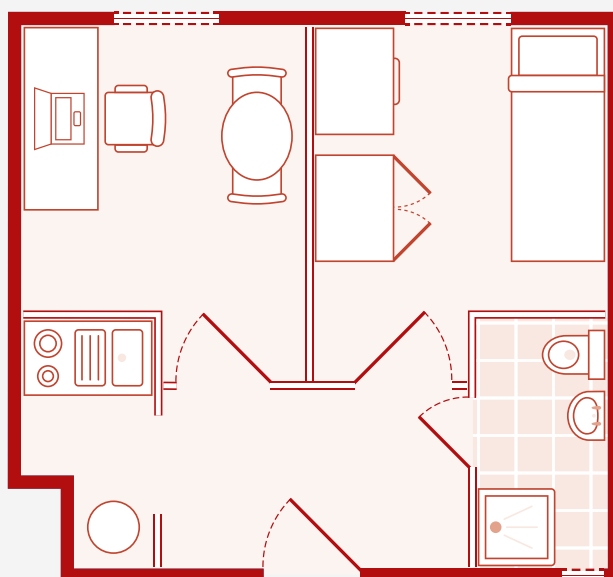
**From £230 per week\***

### Bedroom:

Fully furnished with a bed (with under-bed storage), desk and chair, wardrobe, drawers and shelves.

### Kitchen:

Includes a cupboard storage space, fridge-freezer, cooker and microwave, kettle and toaster.



\* Typical cost based on a three-term academic programme starting in September 2025, on a 40-week contract. Price may differ depending on the college chosen. The length of your accommodation contract will depend upon your course start and end dates, ensuring that you don't pay for unnecessary weeks.



## What else is included?



### Utility bills

Enjoy all-inclusive utilities – no extra charges for electricity, gas and water. Plus, free Wi-Fi to keep you connected without any added costs.



### Facilities

Everything you need is here on campus – from the sports centre and multi-faith centre, to restaurants and international supermarkets. You can pick up mail and parcels at the Porter's Lodge. For laundry, use your college's facilities.



### Social spaces

Your college hosts a variety of events and activities throughout the year. After a busy day, you can relax with friends, play games or enjoy a meal together in shared spaces within your college.



	Ensuite	Shared bathroom	Studio
Weekly cost*	From £194	From £132	From £230
Availability	All colleges	Bowland, County, Furness, Grizedale and Pendle Colleges	Grizedale and Pendle Colleges
Age requirement	Under and over 18 years old	18 years and over	18 years and over
Private ensuite	✓		✓
Shared bathroom		Up to eight students in a cluster flat	
Shared kitchen	Up to 12 students in a cluster flat	Up to 12 students in a cluster flat	
Communal areas	✓	✓	
24/7 helpline all year round	✓	✓	✓
Free Wi-Fi	✓	✓	✓
Regular cleaning for shared areas	✓	✓	
Inclusion of utility bills	✓	✓	✓
Laundry facilities	✓	✓	✓

\* Typical cost based on a three-term academic programme starting in September 2025, on a 40-week contract. Price may differ depending on the college chosen. The length of your accommodation contract will depend upon your course start and end dates, ensuring that you don't pay for unnecessary weeks.



**Take a virtual  
tour of your  
accommodation**



# Everything you need is here

Live, study and socialise on a diverse, town-like campus. With ready-made support system from the study centre and your college, you'll feel at home from day one.



## College

## Walk to the Study Centre

1	Bowland College	7 minutes
2	Cartmel College	3 minutes
3	County College	11 minutes
4	Furness College	5 minutes
5	Fylde College	1 minute
6	Graduate College	8 minutes
7	Grizedale College	3 minutes
8	Lonsdale College	9 minutes
9	Pendle College	5 minutes



# Your most-asked questions, answered

## How do I apply?

Once you've confirmed your course with the study centre, the Lancaster University Accommodation Team will contact you.

**If you're under 18** on the start date of your course, we'll offer you a room in our designated under 18s area on campus. Expect to receive this offer via email in August for September start dates, and in December for January start dates.

**If you're over 18** on the start date of your course, we'll ask the room type you'd prefer. If your course begins in September, you'll receive an invite to select your preferences in June. For January start dates, you'll receive this in November.

If you confirm your course after any of these dates, you'll receive your offer or invite to select preferences within 10 days of confirming your course.

## When can I arrive at my accommodation?

Your college will contact you about arrangements for your arrival. Residents should be ready to move in on the day specified by their college.

## Can my friends or family stay with me?

If you bring someone to help you move into your accommodation, they'll need to book a room at the Lancaster University's on-campus guest rooms accommodation or at a hotel near the university. Friends and family can't stay in your room with you.

## What will my address be?

You'll receive your address on campus when your accommodation is confirmed. However, you'll only receive your specific room number when you arrive at your accommodation.

## Can I get food delivered?

Food deliveries are welcomed. Order groceries and household items online at supermarkets such as Sainsbury's and Lidl. Or order takeaway food via Uber Eats, Deliveroo or Just Eat. There are also plenty of diners and restaurants around the campus that offer delivery service for your convenience.

## Got a question?

Contact us at  
[isc-enquiries@lancaster.ac.uk](mailto:isc-enquiries@lancaster.ac.uk).

## Ready to book your accommodation?

Contact your education counsellor.



**Scan the QR code to look at your accommodation options.**