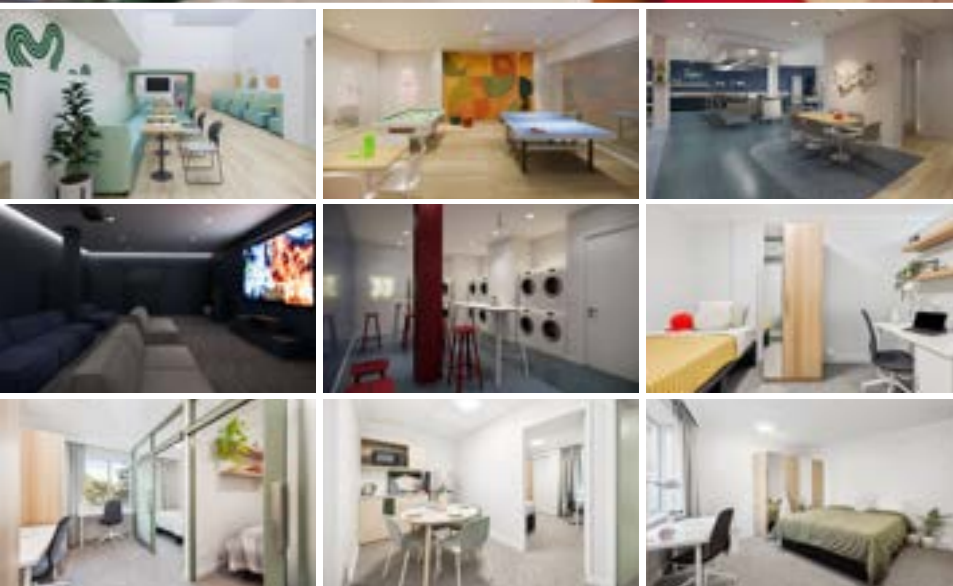


2026 Student Accommodation

Student Resort



Premium co-living space in the heart of Perth.

Juno House offers fully furnished private rooms and modern communal spaces, combining style, convenience, and a strong sense of community. Students can enjoy exclusive club-style amenities at no extra cost, including a gym and yoga space, sauna, theatre room, study areas for productivity, and vibrant social lounges to connect and collaborate.



Juno House

📍 24 Mount St Perth, 6006

Features and Facilities

- 👣 5 min walk to the campus
- 📶 Unlimited Internet / Wifi
- 🛡️ 24/7 Security System
- 📖 Study areas and social lounges
- 🧘 Gym, yoga room, sauna, movie & game room
- 🍴 Communal Kitchen and laundry

All Room Rates Included:

- ✓ Private lockable bedroom
 - ✓ Air-conditioning
 - ✓ Free unlimited internet
 - ✓ Electricity/water
 - ✓ All Kitchen Essentials
 - ✓ Fully furnished (included bed linen*)
- *\$250 kitchen/linen fee applies for stays under 12 weeks

Room Types:

✓ **Urban Twin**
\$486 per week per person



✓ **Dual Living**
\$649 per week per person



✓ **Studio Luxe**



\$880 per week
1 person or a couple

Placement Fee: \$200

Cleaning Fee: \$250

Bond: 2 WEEKS RENT*
*bookings of 4-6 weeks

4 WEEKS RENT*
*bookings of 6+ weeks

*Min 4 weeks booking *All accommodation fees to be paid 30 days prior to arrival



2026 Student Accommodation







Student House



Regal Place Student House

11 Regal Place, East Perth WA 6004

Features and Facilities:

-  30 min walk to the campus
-  20 min Bus ride to the campus
-  Free Wifi
-  Free City Area Transit (CAT) Buses
-  Secure, boutique complex with open plan living
-  Balcony area

All Room Rates Included:

- ✓ Spacious bedroom
- ✓ Free unlimited internet
- ✓ All Kitchen Essentials
- ✓ Laundry
- ✓ Electricity/water
- ✓ Fully furnished (Included bed linen)

Room Types:

Private Single Room

\$495 per week per person

Share Room*

\$315 per week per person

Bond: **\$300** Cleaning Fee: **\$150** Placement Fee: **\$200**

*Twin or triple shared room depending on availability



Ideally positioned in the heart of East Perth village.

Located in the heart of East Perth, Positioned only moments away from East Perth's Royal Street and popular Claisebrook Cove, residents are spoiled for choice with a vast variety of café's and restaurants to choose from. With the ability to walk along the picturesque Swan River, through the Victoria Gardens or easily to a football game at Optus Stadium, catch a free CAT bus right outside the door to the campus and CBD and access the best of the city and Northbridge, this location provides absolute convenience. It's both a lifestyle and location to envy!

