



## Altus House

### The area

Altus House is located in a bustling area that perfectly blends convenience and culture. Situated close to the city centre, students have easy access to top attractions, vibrant shopping destinations, and an array of restaurants and cafes. The nearby neighborhoods offer a mix of green spaces, like Woodhouse Moor, and lively nightlife for students to enjoy. With excellent public transport links, the area makes it simple to explore Leeds and beyond, providing the perfect balance of city life and a welcoming community vibe.

Altus House is a modern, high-rise living space that combines sleek design and impressive city views. It offers spacious studios, dedicated study areas, and vibrant social spaces. Its central location puts you close to shops, cafés, restaurants, and everything Leeds has to offer, making it a perfect choice for students who want to live in the heart of the action with comfort and style.

### Why choose Altus House?

Altus House combines sleek, high-rise living with modern design and impressive city views, offering spacious studios, dedicated study areas, and vibrant social spaces. Its central location puts you close to shops, cafés, restaurants, and everything Leeds has to offer, making it a perfect choice for students who want to live in the heart of the action with comfort and style.

Altus House is a modern, high-rise living space that combines sleek design and impressive city views. It offers spacious studios, dedicated study areas, and vibrant social spaces. Its central location puts you close to shops, cafés, restaurants, and everything Leeds has to offer, making it a perfect choice for students who want to live in the heart of the action with comfort and style.

### To the school

10 minutes walk

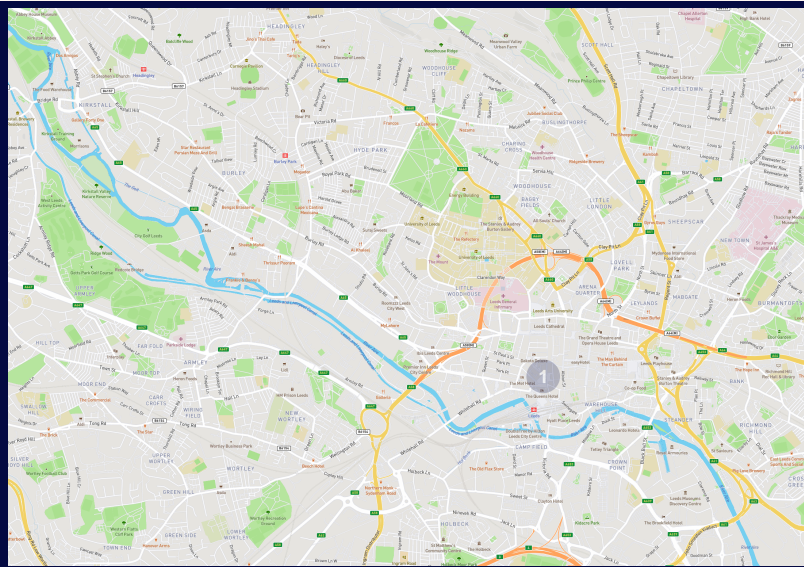


Key Facts			
Room Types Standard en-suiteEN		Security/Reception 24-hour security on site24	
Board Self-catering		Internet Super fast Wi-Fiwi-fi	
Available Year-round		Cleaning Students are responsible for cleaning rooms, kitchens and common areas	
Kitchen facilities Shared kitchen		Residence facilities private and group study areas, a fully equipped gym, a cinema room, communal lounges, and a games room	
Nearest station to residence Leeds Railway Station		Room furnishing 3/4 bed (small double), en-suite bathroom with shower, wardrobe, study desk and chair3/4	
Travel time to school 10 minutes walk10		Bathroom En-suite	
Arrival & departure Arrival: Sunday / Departure: Saturday		Bed type 3/4 bed3/4	
Check In / Check Out After 16:00 / Before 09:0016:00 / 09:00		Minimum age 18+	

## Travelling from nearby airports

By private transfer:

- Leeds Bradford airport 25 minutes drive
- Manchester airport 1h15 drive
- Liverpool John Lennon airport 1h30 drive
- Birmingham airport 2h30 drive
- London Heathrow airport 4h10 drive
- By public transport: [nationalexpress.com/en](https://www.nationalexpress.com/en) [thetrainline.com](https://www.thetrainline.com)

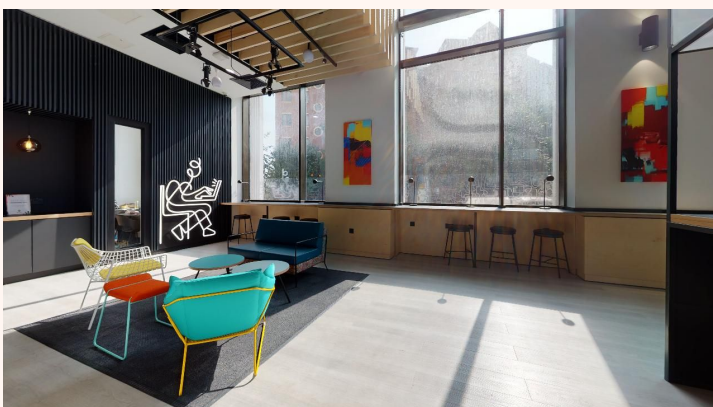
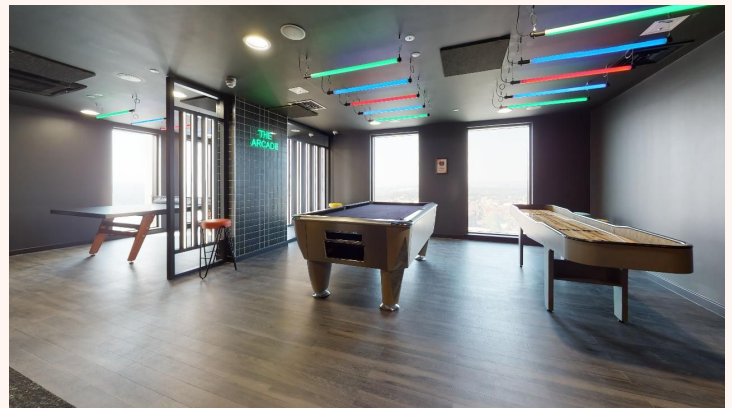


## Points of Interest

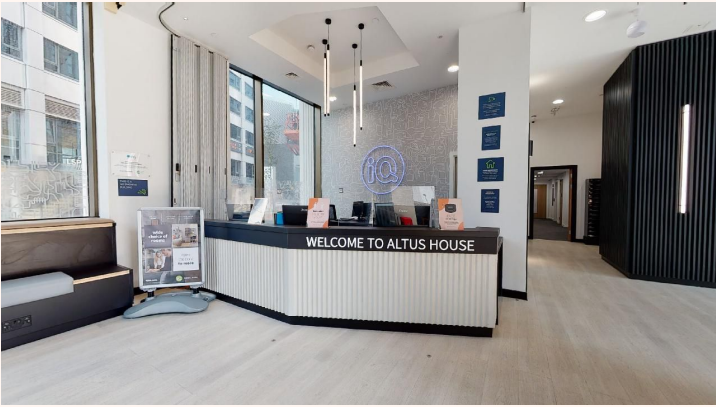


- Altus House アルタスハウス
- Bayswater Leeds ベイズウォーターリーズ
- 1 Leeds Railway Station リーズ鉄道  
駅
- 2 Leeds Town Hall リーズタウンホール
- 3 Leeds Art Gallery リーズアートギャラリー
- 4 Henry Moore Institute ヘンリームーア研究所  
City varieties Music Hall
- 5 シティ品種ミュージックホール
- 6 Victoria Quarter ビクトリアクォーター
- 7 Trinity Leeds トリニティリーズ

## Gallery









**Email us**

[bookings@bayswater.ac](mailto:bookings@bayswater.ac)

**Telephone**

+44 (0) 113 2883047

**Address**

Burley Hill House, Burley Rd, Burley, Leeds  
LS4 2PX, UK

**Agent Enquires**

Our Agents are appointed experts in your country and can give you specialist advice on our courses, as well as any visa requirements. Contact us for an Agent in your area.

**For agent sales enquiries please contact us at**

[sales@bayswater.ac](mailto:sales@bayswater.ac)